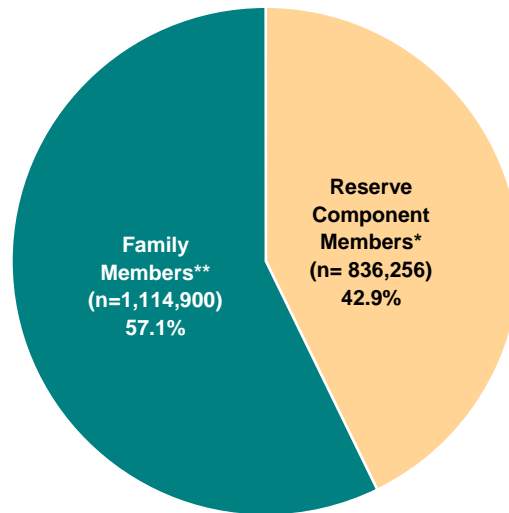


FAMILY MEMBERS

5.01. Family Members and Selected Reserve Members (N=1,951,156)

There are slightly more family members (57.1%) than Selected Reserve members (42.9%).



* Reserve component members include both married and single members.

** Family members include spouses, children, adult dependents, and other dependents under age 21 who are not spouses or children.

DMDC Reserve Family File (September 2007)

5.02. Family Members and Selected Reserve Members by Reserve Component

The percent of family members and the percent of Selected Reserve members is in relation to the sum total of Selected Reserve members and family members for each Reserve Component. The Navy Reserve has the highest percent of family members (62.0%), while the Marine Corps Reserve has the lowest percent (40.3%).

	Reserve Component Members*		Family Members**		Total Sel Res & Families		Ratio of Sel Res Members to Family Members
	N	%	N	%	N	%	
Army National Guard	352,707	44.1%	446,596	55.9%	799,303	100.0%	1 to 1.3
Army Reserve	189,882	44.3%	238,987	55.7%	428,869	100.0%	1 to 1.3
Navy Reserve	69,933	38.0%	113,992	62.0%	183,925	100.0%	1 to 1.6
Marine Corps Reserve	38,557	59.7%	26,052	40.3%	64,609	100.0%	1 to 0.7
Air National Guard	106,254	39.1%	165,700	60.9%	271,954	100.0%	1 to 1.6
Air Force Reserve	71,146	38.3%	114,580	61.7%	185,726	100.0%	1 to 1.6
Total DoD	828,479	42.8%	1,105,907	57.2%	1,934,386	100.0%	1 to 1.3
Coast Guard Reserve	7,777	46.4%	8,993	53.6%	16,770	100.0%	1 to 1.2
Total Sel Res	836,256	42.9%	1,114,900	57.1%	1,951,156	100.0%	1 to 1.3

* Reserve component members include both married and single members.

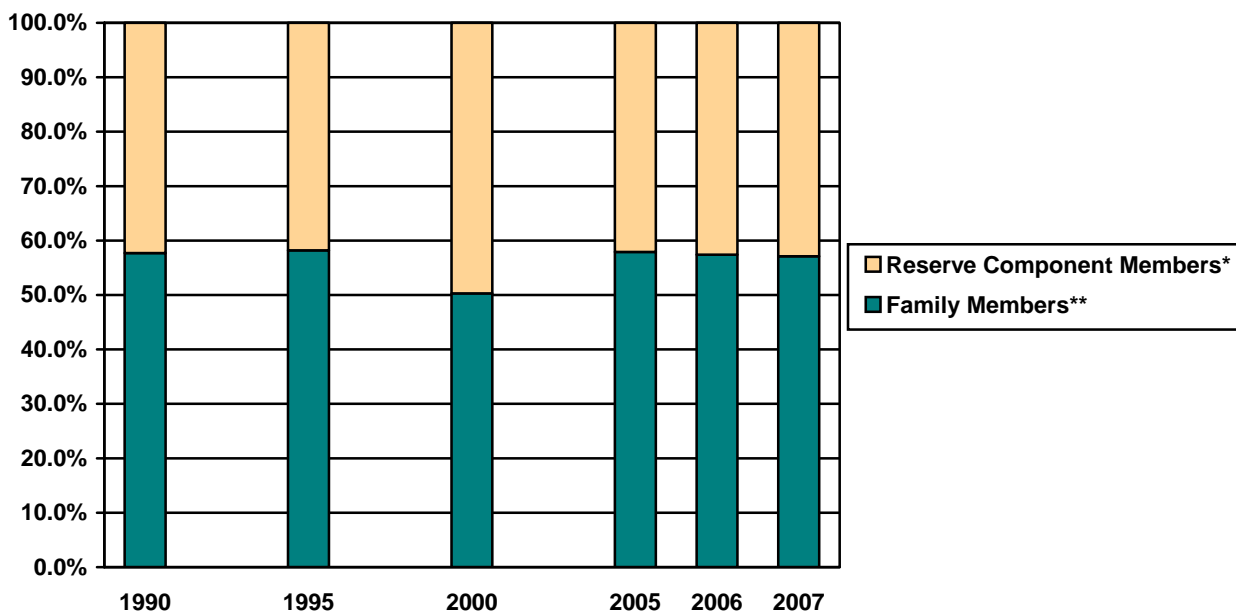
** Family members include spouses, children, adult dependents, and other dependents under age 21 who are not spouses or children.

DMDC Reserve Family File (September 2007)

FAMILY MEMBERS (CONT.)

5.03. Family Members and Selected Reserve Members Trends: 1990-2007

The ratio of Selected Reserve members and family members has varied slightly over the past seventeen years.



* Reserve component members include both married and single members.

** Family members include spouses, children, adult dependents, and other dependents under age 21 who are not spouses or children.

DMDC Reserve Family File (September 1990, 1995, 2000, 2005, 2006, 2007)

5.04. Number and Percent of Family Members to Selected Reserve Members Trends: 1990-2007

While both the number of Selected Reserve members and the number of family members have declined since 1990, the proportion of Reserve members to family members has remained relatively constant.

	1990		1995		2000	
	N	%	N	%	N	%
Reserve Component Members*	1,165,336	42.3%	953,192	41.8%	873,207	49.7%
Family Members**	1,587,045	57.7%	1,324,625	58.2%	883,272	50.3%
Total	2,752,381	100.0%	2,277,817	100.0%	1,756,479	100.0%

	2005		2006		2007	
	N	%	N	%	N	%
Reserve Component Members*	829,005	42.1%	833,930	42.6%	836,256	42.9%
Family Members**	1,141,735	57.9%	1,123,389	57.4%	1,114,900	57.1%
Total	1,970,740	100.0%	1,957,319	100.0%	1,951,156	100.0%

* Reserve component members include both married and single members.

** Family members include spouses, children, adult dependents, and other dependents under age 21 who are not spouses or children.

DMDC Reserve Family File (September 1990, 1995, 2000, 2005, 2006, 2007)

FAMILY MEMBERS (CONT.)

5.05. Selected Reserve Officers and Enlisted with Family Responsibilities by Reserve Component

Selected Reserve members are classified as having family responsibilities if they have a spouse, one or more children and/or one or more other dependents. Over half (55.8%) of the Selected Reserve have family responsibilities.

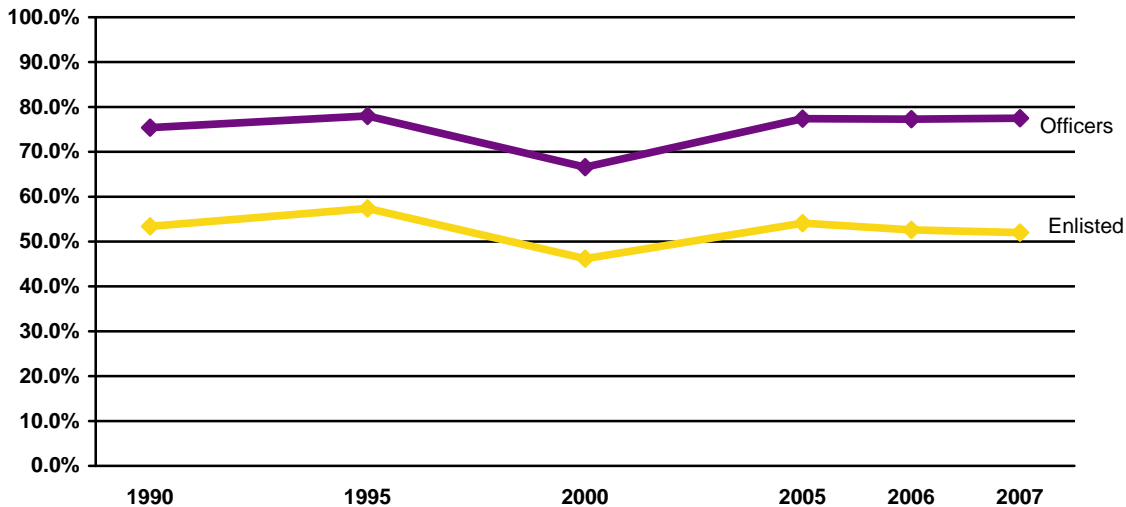
Reserve Component	Officers		Enlisted		Total	
	N	%	N	%	N	%
Army National Guard	28,531	76.1%	155,893	49.5%	184,424	52.3%
Army Reserve	26,966	74.9%	73,476	47.7%	100,442	52.9%
Navy Reserve	12,596	80.1%	34,139	63.0%	46,735	66.8%
Marine Corps Reserve	2,707	81.4%	8,988	25.5%	11,695	30.3%
Air National Guard	11,507	82.0%	58,570	63.5%	70,077	66.0%
Air Force Reserve	13,014	79.6%	35,871	65.5%	48,885	68.7%
Total DoD	95,321	77.6%	366,937	52.0%	462,258	55.8%
Coast Guard Reserve	936	71.1%	3,280	50.8%	4,216	54.2%
Total Sel Res	96,257	77.5%	370,217	52.0%	466,474	55.8%

Note: Not all military members who are reported as married have a spouse listed as a dependent in DEERS.

DMDC Reserve Family File (September 2007)

5.06. Selected Reserve Officers and Enlisted with Family Responsibilities Trends: 1990-2007

After hitting a low point in 2000, the percent of officers and enlisted with family responsibilities has remained relatively stable since 2005.



Note: Data are represented ONLY for the years indicated. Data for the years in between are NOT represented in this graph.

DMDC Reserve Family File (September 1990, 1995, 2000, 2005, 2006, 2007)

FAMILY MEMBERS (CONT.)

5.07. Number and Percent of Family Members of Selected Reserve Members by Reserve Component

Family members include spouses, children and/or other dependents of Active Duty members. Over sixty percent (63.6%) of family members are children.

Reserve Component	Spouses		Children		Other Dependents*		Total Family Members	
	N	%	N	%	N	%	N	%
Army National Guard	158,293	35.4%	287,289	64.3%	1,014	0.2%	446,596	100.0%
Army Reserve	84,915	35.5%	153,064	64.0%	1,008	0.4%	238,987	100.0%
Navy Reserve	40,531	35.6%	73,167	64.2%	294	0.3%	113,992	100.0%
Marine Corps Reserve	10,621	40.8%	15,406	59.1%	25	0.1%	26,052	100.0%
Air National Guard	61,963	37.4%	103,436	62.4%	301	0.2%	165,700	100.0%
Air Force Reserve	42,594	37.2%	71,689	62.6%	297	0.3%	114,580	100.0%
Total DoD	398,917	36.1%	704,051	63.7%	2,939	0.3%	1,105,907	100.0%
Coast Guard Reserve	3,866	43.0%	5,107	56.8%	20	0.2%	8,993	100.0%
Total Sel Res	402,783	36.1%	709,158	63.6%	2,959	0.3%	1,114,900	100.0%

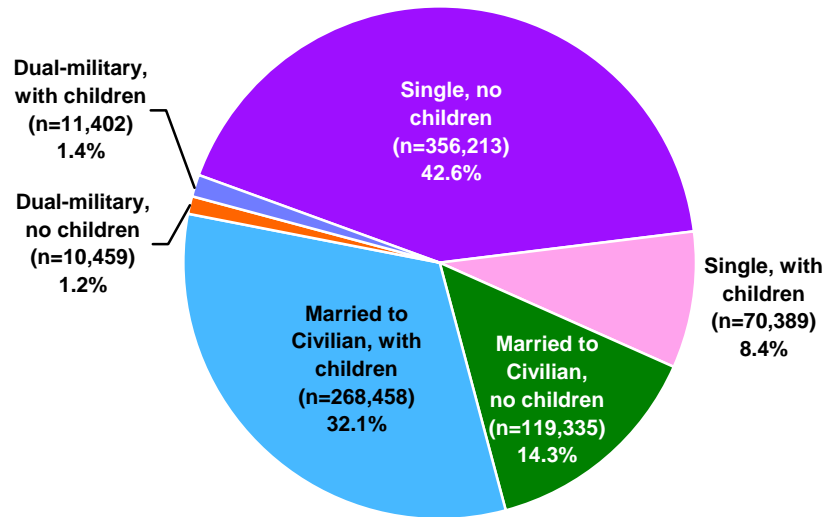
* Other dependents include adult dependents and other dependents under age 21 who are not spouses or children.

DMDC Military Family File (September 2007)

FAMILY STATUS

5.08. Selected Reserve Military Family Status (N=836,256)

Almost half of Selected Reserve members (49.0%) are married and more than one third (41.9%) have children.



Note: Single includes annulled, divorced and widowed. Children include dependents age 22 and younger.

*DMDC Reserve Family File (September 2007);
DMDC Reserve Components Common Personnel Data System (September 2007)*

5.09. Selected Reserve Military Family Status Trends: 2000-2007

The family status distribution of Selected Reserve members has changed only slightly since 2000. The proportion of single personnel and dual military families has increased (+4.2% and +0.7%, respectively), while the proportion of members married to civilians has declined (-4.9%).

	2000		2005		2006		2007	
	N	%	N	%	N	%	N	%
Married to Civilian, no children	228,060	26.1%	126,944	15.3%	121,896	14.6%	119,335	14.3%
Married to Civilian, with children	219,560	25.1%	277,931	33.5%	272,059	32.6%	268,458	32.1%
Dual-Military, no children	9,859	1.1%	10,236	1.2%	10,328	1.2%	10,459	1.2%
Dual-Military, with children	7,165	0.8%	11,186	1.3%	11,141	1.3%	11,402	1.4%
Single, no children	361,353	41.4%	334,475	40.3%	349,730	41.9%	356,213	42.6%
Single, with children	47,210	5.4%	68,233	8.2%	68,776	8.2%	70,389	8.4%
Total	873,207		829,005		833,930		836,256	

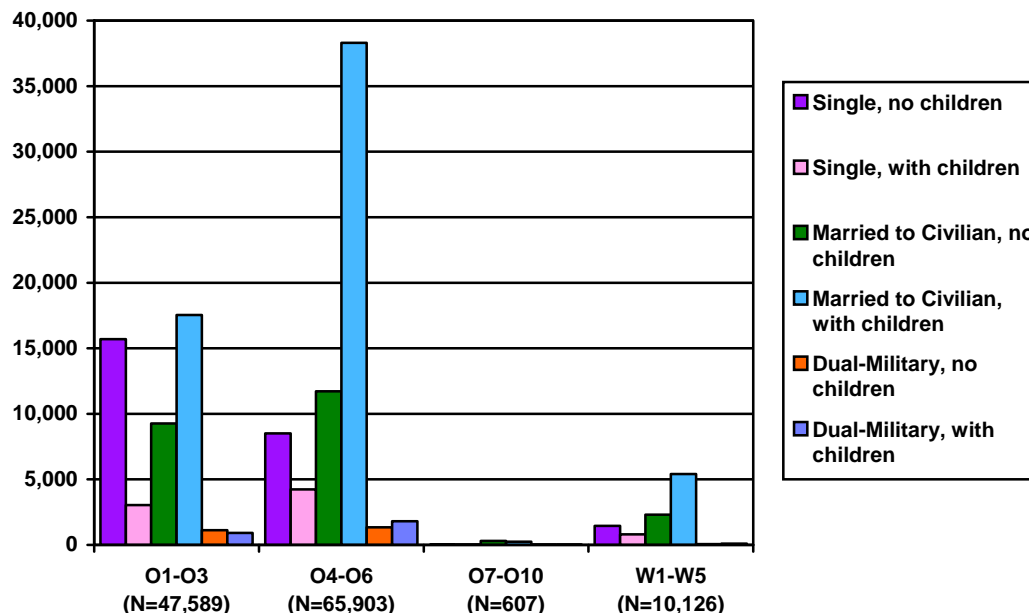
Note: Single includes annulled, divorced, and widowed. Children include dependents age 22 and younger.

*DMDC Reserve Family File (September 2000, 2005, 2006, 2007);
DMDC Reserve Components Common Personnel Data System (September 2000, 2005, 2006, 2007)*

FAMILY STATUS (CONT.)

5.10. Selected Reserve Officer Family Status

The distribution of Selected Reserve officer family status is presented by rank. Across all groups, Selected Reserve members are most likely to be married to civilians.

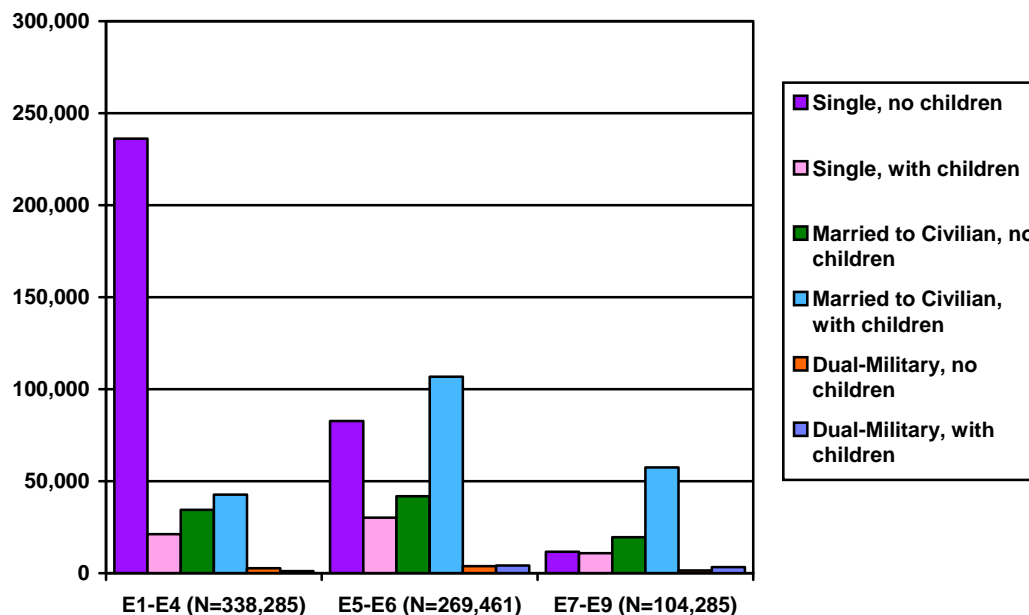


Note: Single includes annulled, divorced and widowed. Children include dependents age 22 and younger.

DMDC Reserve Family File (September 2007); DMDC Reserve Components Common Personnel Data System (September 2007)

5.11. Selected Reserve Enlisted Family Status

The distribution of Selected Reserve enlisted family status varies widely by rank. Junior enlisted are most likely to be single with no children, while senior enlisted are most likely to be married with children.



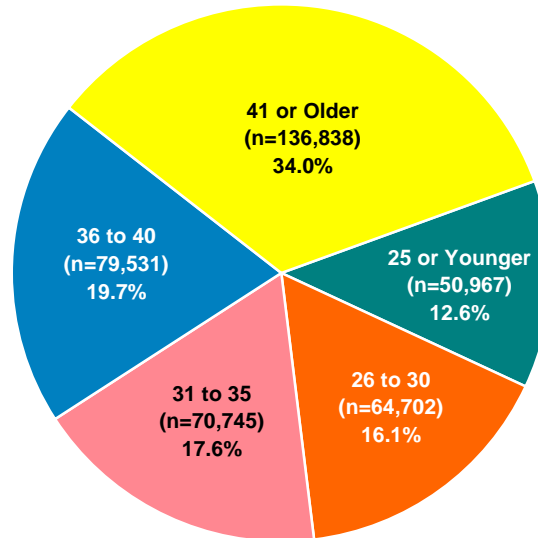
Note: Single includes annulled, divorced and widowed. Children include dependents age 22 and younger.

DMDC Reserve Family File (September 2007); DMDC Reserve Components Common Personnel Data System (September 2007)

SPOUSES

5.12. Age of Spouses of Selected Reserve Members (N=402,783)

Of a total of 402,783 military spouses, over half (53.7%) are over 35 years of age, and about one quarter (28.7%) are 30 years of age or younger.



DMDC Reserve Family File (September 2007)

5.13. Age of Spouses of Selected Reserve Officers and Enlisted by Reserve Component

Almost three-fourths (72.7%) of the 89,153 spouses who are married to Selected Reserve officers are 36 years of age or older. Conversely, over half (51.7%) of the 313,630 spouses who are married to Selected Reserve enlisted members are under 36 years of age.

Reserve Component	25 or Younger		26 to 30 Years		31 to 35 Years	
	Officers	Enlisted	Officers	Enlisted	Officers	Enlisted
Army National Guard	1,180	25,059	3,473	25,722	5,022	23,807
Army Reserve	383	9,955	1,608	11,545	3,580	10,523
Navy Reserve	44	3,048	566	4,642	1,811	6,026
Marine Corps Reserve	17	3,148	181	2,139	515	1,238
Air National Guard	178	4,764	1,001	7,957	1,835	8,957
Air Force Reserve	123	2,859	864	4,478	1,774	4,986
Total DoD	1,925	48,833	7,693	56,483	14,537	55,537
Coast Guard Reserve	8	201	68	458	148	523
Total Sel Res	1,933	49,034	7,761	56,941	14,685	56,060

Reserve Component	36 to 40 Years		41 or Older		Total	
	Officers	Enlisted	Officers	Enlisted	Officers	Enlisted
Army National Guard	6,584	22,257	10,145	35,044	26,404	131,889
Army Reserve	5,720	10,624	13,020	17,957	24,311	60,604
Navy Reserve	3,276	6,658	6,304	8,156	12,001	28,530
Marine Corps Reserve	820	871	1,049	643	2,582	8,039
Air National Guard	2,739	10,158	5,049	19,325	10,802	51,161
Air Force Reserve	2,914	6,067	6,495	12,034	12,170	30,424
Total DoD	22,053	56,635	42,062	93,159	88,270	310,647
Coast Guard Reserve	241	602	418	1,199	883	2,983
Total Sel Res	22,294	57,237	42,480	94,358	89,153	313,630

DMDC Reserve Family File (September 2007)

SPOUSES (CONT.)

5.14. Gender of Military Spouses by Reserve Component

Of a total of 402,760 military spouses for whom the gender is reported, the majority (88.5%) are female.

Reserve Component	Male		Female	
	N	%	N	%
Army National Guard	11,694	7.4%	146,593	92.6%
Army Reserve	12,667	14.9%	72,239	85.1%
Navy Reserve	5,244	12.9%	35,284	87.1%
Marine Corps Reserve	330	3.1%	10,291	96.9%
Air National Guard	8,212	13.3%	53,748	86.7%
Air Force Reserve	7,881	18.5%	34,711	81.5%
Total DoD	46,028	11.5%	352,866	88.5%
Coast Guard Reserve	345	8.9%	3,521	91.1%
Total Sel Res	46,373	11.5%	356,387	88.5%

Note: Gender is not reported for 23 spouses.

DMDC Reserve Family File (September 2007)

DEPENDENTS

5.15. Average Number of Children and Dependents of the Selected Reserve

Selected Reserve members who have children have an average of two children, while Selected Reserve members who have dependents have an average of 2.4 dependents.

	Number of Children*	Number of Dependents**
Average across all Selected Reserve	0.8	1.3
Average for Selected Reserve who have children	2.0	2.8
Average for Selected Reserve who have dependents	1.5	2.4

* Children include dependents who are 22 and younger.

** Dependents include spouses of military members, children, and other dependents.

DMDC Reserve Family File (September 2007)

5.16. Selected Reserve Members with Children by Reserve Component and Pay Grade

The table below presents the number of Selected Reserve members with children by Reserve component and pay grade. The Navy Reserve has the highest percentage of members with children (51.0%), while the Marine Corps Reserve has the lowest percentage (20.7%).

Sponsor Pay Grade	Army National Guard		Army Reserve		Navy Reserve		Marine Corps Reserve	
	N	%	N	%	N	%	N	%
O1-O3	8,549	45.5%	6,285	44.9%	1,708	44.5%	201	34.5%
O4-O6	8,658	73.5%	12,426	64.9%	7,520	64.3%	1,733	72.4%
O7-O10	74	38.9%	51	44.3%	24	48.0%	5	50.0%
W1-W5	4,227	62.7%	1,634	60.0%	106	69.3%	242	71.2%
E1-E4	38,145	21.6%	12,280	16.5%	5,051	26.8%	1,912	7.1%
E5-E6	57,978	54.4%	25,568	47.2%	17,678	58.6%	2,521	38.2%
E7-E9	22,613	70.4%	17,553	69.3%	3,596	69.3%	1,362	75.3%
Total	140,244	39.8%	75,797	39.9%	35,683	51.0%	7,976	20.7%

Sponsor Pay Grade	Air National Guard		Air Force Reserve		Total DoD		Coast Guard Reserve		Total Sel Res	
	N	%	N	%	N	%	N	%	N	%
O1-O3	2,501	48.6%	1,982	43.5%	21,226	45.2%	279	41.5%	21,505	45.2%
O4-O6	6,225	71.4%	7,520	64.2%	44,082	67.4%	262	55.6%	44,344	67.3%
O7-O10	67	41.4%	42	54.5%	263	43.5%	2	66.7%	265	43.7%
W1-W5	N/A*	N/A*	N/A*	N/A*	6,209	62.4%	101	59.4%	6,310	62.3%
E1-E4	4,017	16.6%	3,217	21.9%	64,622	19.3%	420	14.5%	65,042	19.2%
E5-E6	22,629	51.5%	13,613	53.6%	139,987	52.5%	1,147	44.2%	141,134	52.4%
E7-E9	16,304	67.6%	9,650	65.4%	71,078	68.8%	571	59.4%	71,649	68.7%
Total	51,743	48.7%	36,024	50.6%	347,467	41.9%	2,782	35.8%	350,249	41.9%

* The Air National Guard and Air Force Reserve do not have Warrant Officers.

Note: Children include dependents who are 22 and younger.

DMDC Reserve Family File (September 2007)

DEPENDENTS (CONT.)

5.17. Selected Reserve Member's Age at Birth of First Child*

This table displays the age, gender, and Reserve Component of the Selected Reserve members who had their first child in 2007. The number of Selected Reserve members who had their first child in 2007 is 9,654, up from 8,442 in 2006.

Age	Army National Guard		Army Reserve		Navy Reserve		Marine Corps Reserve		Air National Guard		Air Force Reserve	
	Female	Male	Female	Male	Female	Male	Female	Male	Female	Male	Female	Male
17	4	20	1	4	0	0	0	1	0	1	0	0
18	25	103	2	14	0	0	0	4	1	6	0	1
19	37	201	13	34	4	10	2	15	9	9	12	5
20	68	258	32	54	8	19	2	54	16	24	10	9
21	74	287	30	60	9	17	5	45	26	32	13	20
22	69	349	34	78	16	22	2	61	20	36	8	16
23	61	360	48	98	11	23	3	57	22	49	16	22
24	55	348	35	95	15	22	4	42	18	65	9	34
25	51	321	30	106	12	19	2	40	15	71	9	28
26	36	273	24	84	9	21	3	27	25	65	8	26
27	30	246	17	77	6	24	2	18	26	62	9	32
28	22	205	15	59	5	28	0	16	17	72	9	31
29	17	172	17	63	6	20	1	14	13	68	4	22
30	11	129	16	49	4	21	0	5	14	58	11	27
31	9	128	9	52	6	32	1	18	11	46	7	27
32	14	124	7	48	4	31	0	11	10	47	5	17
33	11	100	10	31	1	33	0	3	15	54	7	26
34	6	79	8	35	4	34	0	10	6	44	3	12
35	11	78	14	38	4	46	1	8	5	36	5	25
36	10	79	8	41	9	24	0	4	6	37	10	24
37	5	63	6	29	1	17	0	2	4	28	5	19
38	3	47	8	28	3	21	0	5	5	22	4	12
39	6	31	5	21	4	15	0	3	5	17	1	18
40	2	30	2	23	0	9	0	2	2	10	1	8
41	2	25	1	15	0	14	0	1	0	13	1	13
42	0	18	3	16	1	10	0	0	0	11	1	5
43	0	10	0	15	0	5	0	3	1	3	2	7
44	1	7	0	4	0	7	0	0	0	3	0	6
45	0	7	1	4	0	4	0	0	0	4	1	2
Over 45	2	16	1	14	0	6	0	1	1	13	1	8
Subtotal	642	4,114	397	1,289	142	554	28	470	293	1,006	172	502
Total	4,756		1,686		696		498		1,299		674	

Note: Table is continued on next page.

DMDC Reserve Family File (September 2007)

DEPENDENTS (CONT.)

5.17 (Cont.). Selected Reserve Member's Age at Birth of First Child

Age	Total DoD		Coast Guard Reserve		Total Sel Res	
	Female	Male	Female	Male	Female	Male
17	5	26	0	0	5	26
18	28	128	0	0	28	128
19	77	274	0	0	77	274
20	136	418	0	0	136	418
21	157	461	0	4	157	465
22	149	562	0	2	149	564
23	161	609	1	1	162	610
24	136	606	0	2	136	608
25	119	585	1	2	120	587
26	105	496	0	0	105	496
27	90	459	1	0	91	459
28	68	411	0	4	68	415
29	58	359	0	3	58	362
30	56	289	1	5	57	294
31	43	303	0	3	43	306
32	40	278	0	3	40	281
33	44	247	0	1	44	248
34	27	214	1	1	28	215
35	40	231	0	0	40	231
36	43	209	0	2	43	211
37	21	158	0	2	21	160
38	23	135	0	1	23	136
39	21	105	0	1	21	106
40	7	82	0	1	7	83
41	4	81	0	1	4	82
42	5	60	0	0	5	60
43	3	43	0	0	3	43
44	1	27	0	1	1	28
45	2	21	0	0	2	21
Over 45	5	58	0	0	5	58
Subtotal	1,674	7,935	5	40	1,679	7,975
Total	9,609		45		9,654	

DMDC Reserve Family File (September 2007)

5.18. Average Age at Birth of First Child by Reserve Component

The average age of Selected Reserve members at the birth of their first child is highest for the Navy Reserve (30.2 years) and lowest for the Marine Corps Reserve (24.9 years).

Reserve Component	Average Age
Army National Guard	25.9
Army Reserve	27.8
Navy Reserve	30.2
Marine Corps Reserve	24.9
Air National Guard	28.9
Air Force Reserve	29.7
Total DoD	27.0
Coast Guard Reserve	29.8
Total Sel Res	27.1

DMDC Reserve Family File (September 2007)

DEPENDENTS (CONT.)

5.19. Number of Children by Age and Reserve Component

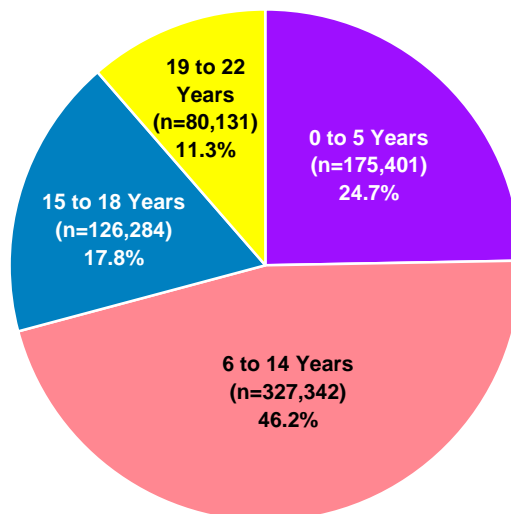
The number of children of Selected Reserve members is presented by age and Reserve component. In total, Selected Reserve members have 709,158 children.

Age	Army National Guard	Army Reserve	Navy Reserve	Marine Corps Reserve	Air National Guard	Air Force Reserve	Total DoD	Coast Guard Reserve	Total Sel Res
0	7,505	3,005	1,551	665	2,259	1,247	16,232	94	16,326
1	11,390	4,931	2,596	987	3,537	1,985	25,426	170	25,596
2	13,196	5,907	2,931	1,050	3,904	2,501	29,489	206	29,695
3	14,400	6,652	3,195	1,148	4,366	2,900	32,661	227	32,888
4	15,173	7,428	3,504	1,062	4,710	3,061	34,938	271	35,209
5	15,274	7,687	3,603	981	4,741	3,140	35,426	261	35,687
6	15,440	7,807	3,896	980	5,104	3,297	36,524	266	36,790
7	15,691	8,011	3,905	983	5,278	3,603	37,471	267	37,738
8	15,147	7,988	3,997	860	5,174	3,505	36,671	269	36,940
9	14,982	7,850	3,947	808	5,123	3,624	36,334	250	36,584
10	14,738	7,726	4,022	767	5,245	3,660	36,158	240	36,398
11	14,587	7,733	4,102	717	5,253	3,806	36,198	243	36,441
12	14,389	7,784	3,975	669	5,228	3,779	35,824	253	36,077
13	14,100	7,765	3,967	593	5,300	3,713	35,438	247	35,685
14	13,689	7,625	3,776	548	5,159	3,652	34,449	240	34,689
15	13,267	7,529	3,678	513	5,142	3,745	33,874	258	34,132
16	12,583	7,410	3,362	502	5,009	3,568	32,434	219	32,653
17	12,014	7,025	3,221	394	4,921	3,635	31,210	230	31,440
18	10,727	6,317	2,737	347	4,360	3,353	27,841	218	28,059
19	9,088	5,799	2,272	281	3,918	2,888	24,246	204	24,450
20	7,732	4,927	1,983	221	3,580	2,619	21,062	177	21,239
Over 20	12,177	8,158	2,947	330	6,125	4,408	34,145	297	34,442
Total	287,289	153,064	73,167	15,406	103,436	71,689	704,051	5,107	709,158

DMDC Reserve Family File (September 2007)

5.20. Age of Children of Selected Reserve (N=709,158)

Approximately 46 percent of Selected Reserve members' children are between the ages of 6 and 14 years. The next largest segments are the birth to five years group (24.7%) and the 15 to 18 years group (17.8%). Fewer children (11.3%) are 19 years of age or older.



DMDC Reserve Family File (September 2007)

DEPENDENTS (CONT.)**5.21. Age and Gender of Children by Selected Reserve Sponsor Pay Grade: Preschool-Kindergarten**

The table below presents the distribution of preschool to kindergarten aged children, categorized by the child's age and gender and by the Reserve sponsor's pay grade. Of the 175,401 children in this age group, 40.8 percent are 2 or younger, while 59.2 percent are between 3 and 5 years of age.

Sponsor Pay Grade	Ages 0-2		Ages 3-5		Total	
	Male	Female	Male	Female	Male	Female
O1-O3	3,559	3,461	4,435	4,355	7,994	7,816
O4-O6	2,781	2,690	5,581	5,347	8,362	8,037
O7-O10	3	2	3	2	6	4
W1-W5	373	394	720	615	1,093	1,009
E1-E4	11,521	11,164	13,581	13,342	25,102	24,506
E5-E6	14,801	14,351	22,371	21,191	37,172	35,542
E7-E9	3,346	3,171	6,265	5,976	9,611	9,147
Subtotal	36,384	35,233	52,956	50,828	89,340	86,061
Total	71,617		103,784		175,401	

DMDC Reserve Family File (September 2007)

5.22. Age and Gender of Children by Selected Reserve Sponsor Pay Grade: Primary School

The table below presents the distribution of primary school aged children, categorized by the child's age and gender and by the Reserve sponsor's pay grade. Of the 327,342 children in this age group, 67.5 percent are between 6 and 11, while 32.5 percent are between 12 and 14 years of age.

Sponsor Pay Grade	Ages 6-11		Ages 12-14		Total	
	Male	Female	Male	Female	Male	Female
O1-O3	7,555	7,246	2,798	2,722	10,353	9,968
O4-O6	16,233	15,321	8,233	7,877	24,466	23,198
O7-O10	31	28	30	23	61	51
W1-W5	1,842	1,805	1,089	1,113	2,931	2,918
E1-E4	19,053	18,644	6,433	6,167	25,486	24,811
E5-E6	47,676	45,813	22,283	21,588	69,959	67,401
E7-E9	20,140	19,504	13,098	12,997	33,238	32,501
Subtotal	112,530	108,361	53,964	52,487	166,494	160,848
Total	220,891		106,451		327,342	

DMDC Reserve Family File (September 2007)

5.23. Age and Gender of Children by Selected Reserve Sponsor Pay Grade: High School and Above

The table below presents the distribution of children high school age and above, categorized by the child's age and gender and by the Reserve sponsor's pay grade. Of the 206,415 children in this age group, 61.2 percent are between 15 and 18, while 38.8 percent are between 19 and 22 years of age.

Sponsor Pay Grade	Ages 15-18		Ages 19-22		Total	
	Male	Female	Male	Female	Male	Female
O1-O3	2,524	2,467	1,077	1,180	3,601	3,647
O4-O6	9,814	9,665	6,684	6,679	16,498	16,344
O7-O10	66	77	104	92	170	169
W1-W5	1,450	1,501	1,122	1,147	2,572	2,648
E1-E4	5,866	5,768	2,174	2,216	8,040	7,984
E5-E6	25,114	24,520	13,706	14,314	38,820	38,834
E7-E9	19,070	18,382	14,580	15,056	33,650	33,438
Subtotal	63,904	62,380	39,447	40,684	103,351	103,064
Total	126,284		80,131		206,415	

DMDC Reserve Family File (September 2007)

DEPENDENTS (CONT.)

5.24. Age and Gender of Adult Dependents by Selected Reserve Sponsor Pay Grade

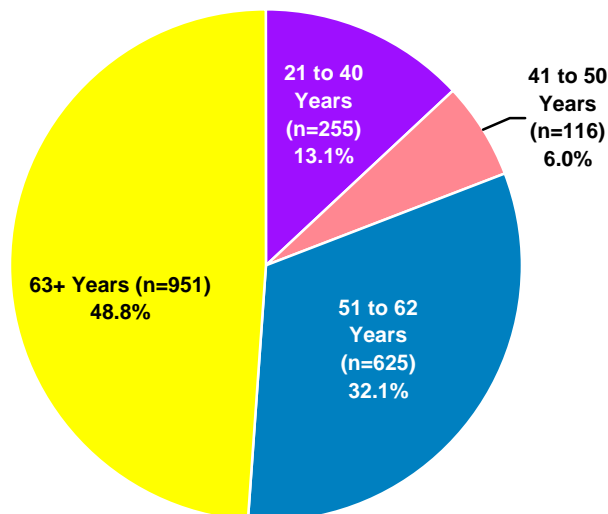
"Adult Dependent" refers to a parent, a grandparent, a former spouse, a sibling, a disabled older child, and any other individual claimed as a dependent in the Defense Enrollment Eligibility Reporting System (DEERS) over the age of 20. The following table displays the number of adult dependents claimed by Selected Reserve members of each pay grade in 2007. The gender and age group with the largest number of adult dependents for 2007 is female and over 62.

Sponsor Pay Grade	Ages 21-40		Ages 41-50		Ages 51-62		Ages 63 and Older		Total	
	Male	Female	Male	Female	Male	Female	Male	Female	Male	Female
O1-O3	3	5	0	8	10	55	16	56	29	124
O4-O6	17	16	1	2	5	41	40	157	63	216
O7-O10	0	0	0	0	0	0	0	0	0	0
W1-W5	4	6	0	0	0	12	8	15	12	33
E1-E4	6	10	4	44	13	88	8	19	31	161
E5-E6	37	54	4	46	27	238	55	252	123	590
E7-E9	41	56	2	5	14	122	51	274	108	457
Subtotal	108	147	11	105	69	556	178	773	366	1,581
Total Sel Res	255		116		625		951		1,947	

DMDC Reserve Family File (September 2007)

5.25. Age of Adult Dependents of Selected Reserve (N=1,947)

The highest percent (50.5%) of adult dependents of Selected Reserve members are 63 years old or older. The next highest percent of adult dependents are between the ages of 51 and 62 (32.1%).



DMDC Reserve Family File (September 2007)

DUAL-MILITARY AND SINGLE PARENTS

5.26. Number of Members in Dual-military Marriages with Children by Reserve Component and Pay Grade

Of all Selected Reserve members, 11,402 are in dual-military marriages with children. The Air National Guard has the highest number of members who are in dual-military marriages with children (4,003), followed by the Army Reserve (3,322) and the Air Force Reserve (3,104).

Reserve Component	O1-O3	O4-O6	O7-O10	W1-W5	E1-E4	E5-E6	E7-E9	Total
Army National Guard**	N/A	N/A	N/A	N/A	N/A	N/A	N/A	N/A
Army Reserve	317	493	2	79	397	1175	859	3,322
Navy Reserve	38	132	0	1	173	268	35	647
Marine Corps Reserve	7	42	0	11	43	102	28	233
Air National Guard	269	448	8	N/A*	241	1531	1506	4,003
Air Force Reserve	273	678	2	N/A*	272	1058	821	3,104
Total DoD	904	1,793	12	91	1,126	4,134	3,249	11,309
Coast Guard Reserve	14	9	0	1	12	44	13	93
Total Sel Res	918	1,802	12	92	1,138	4,178	3,262	11,402

* The Air National Guard and Air Force Reserve do not have Warrant Officers.

** The Army National Guard does not report dual-military marriages.

DMDC Reserve Family File (September 2007)

DUAL-MILITARY AND SINGLE PARENTS (CONT.)

5.27. Single Parent Selected Reserve Members by Reserve Component and Gender

The percent of single parent Selected Reserve members is lower than that of the civilian population. According to U.S. Census numbers, 17.1 percent of United States households were single parent households in 2007. In comparison, 8.4 percent, or 70,389, of Selected Reserve members are single parents.

Reserve Component	Male	Female	Total
Army National Guard	22,516	7,497	30,019*
Army Reserve	10,235	6,370	16,605
Navy Reserve	4,315	2,645	6,960
Marine Corps Reserve	1,001	148	1,149
Air National Guard	6,305	2,580	8,885
Air Force Reserve	3,956	2,456	6,412
Total DoD	48,328	21,696	70,030
Coast Guard Reserve	279	80	359
Total Sel Res	48,607	21,776	70,389

Note: A parent is a member who has a child registered in DEERS.

* Includes 6 cases from the Army National Guard where gender was not reported.

DMDC Reserve Family File (September 2007); United States Census (2007)

5.28. Percent of Single Parent Selected Reserve Members by Reserve Component and Pay Grade

The Navy Reserve has the highest percent of single parent members (10.0%) followed by the Air Force Reserve (9.0%), while the Marine Corps Reserve has the lowest percent (3.0%).

Pay Grade	Army National Guard	Army Reserve	Navy Reserve	Marine Corps Reserve	Air National Guard*	Air Force Reserve*	Total DoD	Coast Guard Reserve	Total Sel Res
O1-O3	5.8%	8.1%	7.1%	2.1%	5.5%	5.5%	6.4%	2.7%	6.4%
O4-O6	6.3%	7.3%	8.2%	4.3%	5.5%	4.7%	6.4%	3.2%	6.4%
O7-O10	1.1%	3.5%	4.0%	0.0%	1.9%	3.9%	2.3%	0.0%	2.3%
W1-W5	7.4%	9.1%	13.1%	10.6%	N/A*	N/A*	8.0%	5.9%	8.0%
E1-E4	7.1%	5.6%	8.8%	1.6%	5.4%	7.1%	6.3%	3.3%	6.3%
E5-E6	11.3%	11.9%	11.9%	6.0%	10.4%	11.6%	11.2%	6.1%	11.2%
E7-E9	9.5%	12.8%	9.1%	10.2%	9.3%	11.0%	10.5%	6.4%	10.4%
Total	8.5%	8.7%	10.0%	3.0%	8.4%	9.0%	8.5%	4.6%	8.4%

* The Air National Guard and Air Force Reserve do not have Warrant Officers.

Note: A parent is a member who has a child registered in DEERS.

DMDC Reserve Family File (September 2007)

DUAL-MILITARY AND SINGLE PARENTS (CONT.)

5.29. Single Parent Selected Reserve Members by Reserve Component and Gender Trends: 2000-2007

The number of single parent Selected Reserve members has continued to increase from 2000 to 2007.

Reserve Component	2000		2005		2006		2007	
	Male	Female	Male	Female	Male	Female	Male	Female
Army National Guard	11,538	3,529	20,912	6,106	21,492	6,811	22,516	7,497
Army Reserve	6,978	4,899	10,145	6,029	10,088	6,068	10,235	6,370
Navy Reserve	4,273	1,957	4,718	2,656	4,226	2,562	4,315	2,645
Marine Corps Reserve	844	139	1,062	159	1,007	150	1,001	148
Air National Guard	5,118	2,209	6,444	2,510	6,507	2,495	6,305	2,580
Air Force Reserve	3,371	1,687	4,658	2,497	4,521	2,509	3,956	2,456
Total DoD	32,122	14,420	47,939	19,957	47,841	20,595	48,328	21,696
Coast Guard Reserve	183	55	265	72	264	76	279	80
Total Sel Res	32,305	14,475	48,204	20,029	48,105	20,671	48,607	21,776

Note: A parent is a member who has a child registered in DEERS.

DMDC Reserve Family File (September 2000, 2005, 2006, 2007)