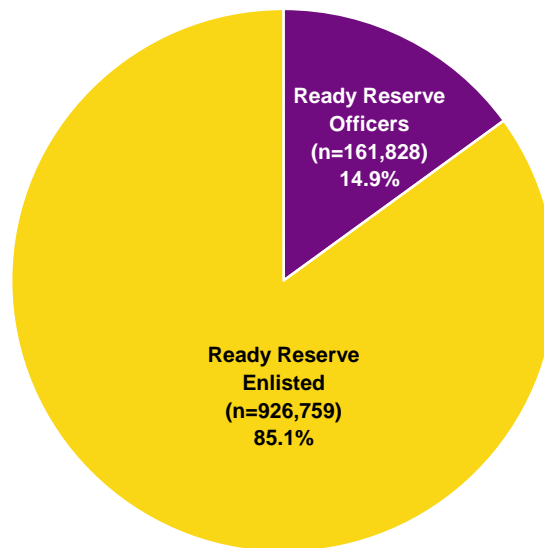


## READY RESERVE PERSONNEL

### 4.01. Officers and Enlisted of the Ready Reserve (N=1,088,587)

The Ready Reserve is a major source of manpower and is comprised of the Selected Reserve, the Individual Ready Reserve (IRR), and the Inactive National Guard (ING). IRR and ING members typically have served as Active Duty or Selected Reserve members in the past, but do not currently participate in organized training. Selected Reserve members train throughout the year and participate annually in Active Duty training exercises.



*DMDC Reserve Components Common Personnel Data System (September 2007)*

### 4.02. Ready Reserve Personnel Officers and Enlisted by Reserve Component

Across all components of the Ready Reserve, there are 161,828 total officers and 926,759 total enlisted members.

Reserve Component	Selected Reserve			IRR and ING*			Total Ready Reserve		
	Officers	Enlisted	Total	Officers	Enlisted	Total	Officers	Enlisted	Total
Army National Guard	37,495	315,212	352,707	274	2,011	2,285	37,769	317,223	354,992
Army Reserve	35,990	153,892	189,882	9,311	67,237	76,548	45,301	221,129	266,430
Navy Reserve	15,727	54,206	69,933	11,506	46,982	58,488	27,233	101,188	128,421
Marine Corps Reserve	3,326	35,231	38,557	3,164	59,066	62,230	6,490	94,297	100,787
Air National Guard	14,025	92,229	106,254	N/A*	N/A*	N/A*	14,025	92,229	106,254
Air Force Reserve	16,346	54,800	71,146	13,224	36,182	49,406	29,570	90,982	120,552
<b>Total DoD</b>	<b>122,909</b>	<b>705,570</b>	<b>828,479</b>	<b>37,479</b>	<b>211,478</b>	<b>248,957</b>	<b>160,388</b>	<b>917,048</b>	<b>1,077,436</b>
Coast Guard Reserve	1,316	6,461	7,777	124	3,250	3,374	1,440	9,711	11,151
<b>Total</b>	<b>124,225</b>	<b>712,031</b>	<b>836,256</b>	<b>37,603</b>	<b>214,728</b>	<b>252,331</b>	<b>161,828</b>	<b>926,759</b>	<b>1,088,587</b>

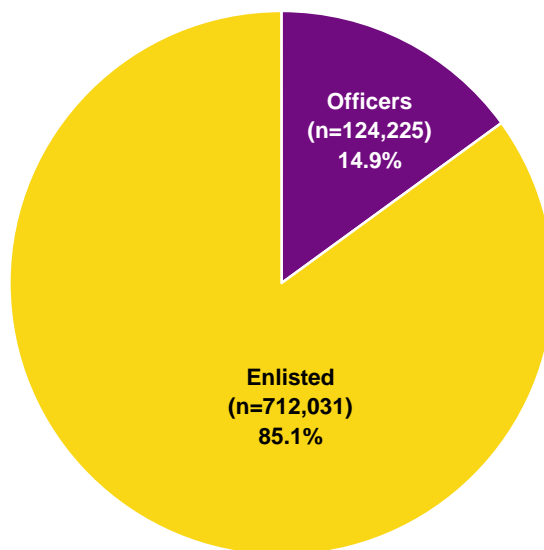
\* The Air National Guard does not have IRR or ING members. The Army National Guard is the only Reserve component with ING members.

*DMDC Reserve Components Common Personnel Data System (September 2007)*

**SELECTED RESERVE PERSONNEL**

**4.03. Officers and Enlisted of the Selected Reserve  
(N=836,256)**

Of the 836,256 members of the Selected Reserve, 14.9 percent are officers and 85.1 percent are enlisted.



*DMDC Reserve Components Common Personnel Data System (September 2007)*

**4.04. Number and Ratio of Selected Reserve Officers to Enlisted by Reserve Component**

The Air Force Reserve and Navy Reserve each have one officer for every 3.4 enlisted personnel. Conversely, the Marine Corps Reserve reports one officer for every 10.6 enlisted personnel.

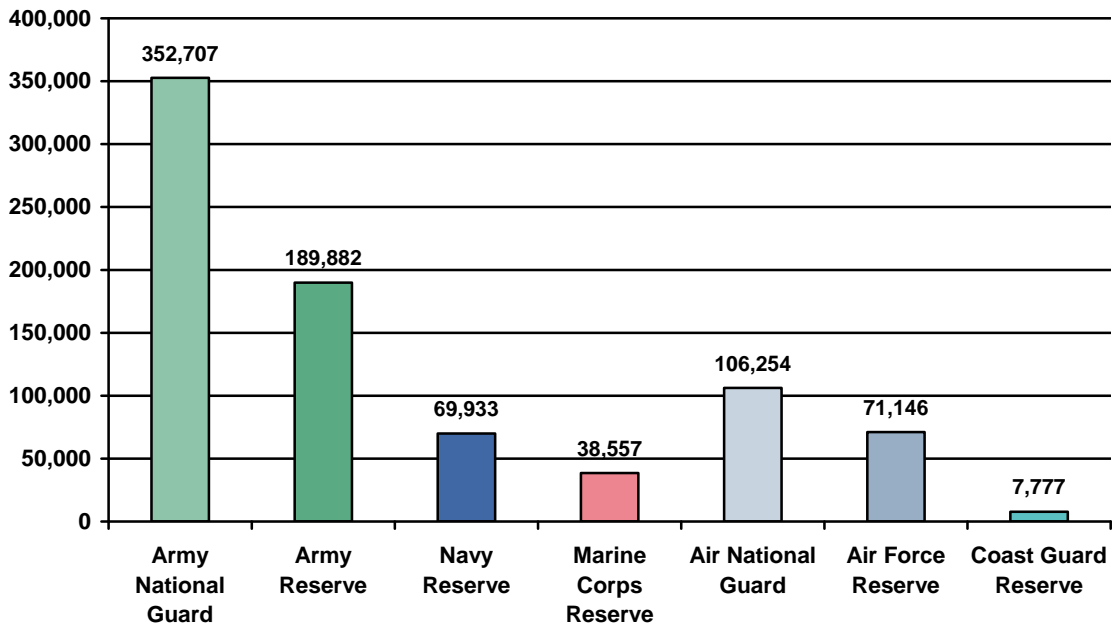
Reserve Component	Officers	Enlisted	Total	Ratio of Officers to Enlisted
Army National Guard	37,495	315,212	352,707	1 to 8.4
Army Reserve	35,990	153,892	189,882	1 to 4.3
Navy Reserve	15,727	54,206	69,933	1 to 3.4
Marine Corps Reserve	3,326	35,231	38,557	1 to 10.6
Air National Guard	14,025	92,229	106,254	1 to 6.6
Air Force Reserve	16,346	54,800	71,146	1 to 3.4
<b>Total DoD</b>	<b>122,909</b>	<b>705,570</b>	<b>828,479</b>	<b>1 to 5.7</b>
Coast Guard Reserve	1,316	6,461	7,777	1 to 4.9
<b>Total Sel Res</b>	<b>124,225</b>	<b>712,031</b>	<b>836,256</b>	<b>1 to 5.7</b>

*DMDC Reserve Components Common Personnel Data System (September 2007)*

## SELECTED RESERVE PERSONNEL (CONT.)

### 4.05. Number of Selected Reserve Personnel by Reserve Component

The Army National Guard (352,707) and Army Reserve (189,882) have the largest number of Selected Reserve personnel, followed by the Air National Guard (106,254), Air Force Reserve (71,146), Navy Reserve (69,933), Marine Corps Reserve (38,557) and the Coast Guard Reserve (7,777).



*DMDC Reserve Components Common Personnel Data System (September 2007)*

## SELECTED RESERVE PERSONNEL (CONT.)

### 4.06. Number of Selected Reserve Personnel by Pay Grade and Reserve Component

The number of Selected Reserve in each pay grade for a Reserve component is presented below. The pay grades consist of 3 categories, Officers ("O"), Warrant Officers ("W"), and Enlisted ("E").

Pay Grade	Army National Guard	Army Reserve	Navy Reserve	Marine Corps Reserve	Air National Guard	Air Force Reserve	Total DoD	Coast Guard Reserve	Total Sel Res
O1	4,398	2,107	303	39	1,006	309	8,162	123	8,285
O2	6,438	3,707	711	23	1,032	702	12,613	183	12,796
O3	7,948	8,196	2,821	521	3,110	3,546	26,142	366	26,508
O4	6,460	9,722	4,556	956	3,714	5,771	31,179	281	31,460
O5	3,800	7,051	4,902	1,070	4,102	4,563	25,488	144	25,632
O6	1,523	2,367	2,231	367	899	1,378	8,765	46	8,811
O7	132	64	28	6	113	51	394	1	395
O8	58	51	22	4	48	25	208	2	210
O9	0	0	0	0	1	1	2	0	2
O10	0	0	0	0	0	0	0	0	0
O-Unknown	0	0	0	0	0	0	0	0	0
<b>Total O1-O10</b>	<b>30,757</b>	<b>33,265</b>	<b>15,574</b>	<b>2,986</b>	<b>14,025</b>	<b>16,346</b>	<b>112,953</b>	<b>1,146</b>	<b>114,099</b>
W1	1,254	578	0	21	N/A*	N/A*	1,853	0	1,853
W2	2,011	689	50	146	N/A*	N/A*	2,896	44	2,940
W3	1,455	718	47	92	N/A*	N/A*	2,312	63	2,375
W4	1,586	629	56	61	N/A*	N/A*	2,332	63	2,395
W5	432	111	0	20	N/A*	N/A*	563	0	563
W-Unknown	0	0	0	0	N/A*	N/A*	0	0	0
<b>Total W1-W5</b>	<b>6,738</b>	<b>2,725</b>	<b>153</b>	<b>340</b>	<b>N/A*</b>	<b>N/A*</b>	<b>9,956</b>	<b>170</b>	<b>10,126</b>
<b>Total Officers</b>	<b>37,495</b>	<b>35,990</b>	<b>15,727</b>	<b>3,326</b>	<b>14,025</b>	<b>16,346</b>	<b>122,909</b>	<b>1,316</b>	<b>124,225</b>
E1	26,131	10,053	1,954	2,100	346	550	41,134	11	41,145
E2	18,997	7,655	1,742	3,753	161	508	32,816	73	32,889
E3	40,502	17,511	5,288	15,077	7,135	2,463	87,976	408	88,384
E4	90,857	39,163	9,853	5,890	16,553	11,138	173,454	2,410	175,864
E5	68,449	31,076	16,911	4,671	23,826	11,501	156,434	1,338	157,772
E6	38,147	23,102	13,272	1,931	20,097	13,881	110,430	1,259	111,689
E7	22,270	15,965	3,824	1,135	16,948	10,133	70,275	715	70,990
E8	7,782	7,599	981	489	4,946	3,483	25,280	150	25,430
E9	2,077	1,768	381	185	2,216	1,141	7,768	97	7,865
E-Unknown	0	0	0	0	1	2	3	0	3
<b>Total Enlisted</b>	<b>315,212</b>	<b>153,892</b>	<b>54,206</b>	<b>35,231</b>	<b>92,229</b>	<b>54,800</b>	<b>705,570</b>	<b>6,461</b>	<b>712,031</b>
<b>Total</b>	<b>352,707</b>	<b>189,882</b>	<b>69,933</b>	<b>38,557</b>	<b>106,254</b>	<b>71,146</b>	<b>828,479</b>	<b>7,777</b>	<b>836,256</b>

\* The Air National Guard and Air Force Reserve do not have Warrant Officers.

*DMDC Reserve Components Common Personnel Data System (September 2007)*

## SELECTED RESERVE PERSONNEL (CONT.)

### 4.07. Percent of Selected Reserve Personnel by Pay Grade and Reserve Component

The percent of Selected Reserve members in each pay grade for a Reserve component in relation to the total number of Selected Reserve members for that Reserve component is presented below. The pay grades consist of 3 categories, Officers ("O"), Warrant Officers ("W"), and Enlisted ("E").

Pay Grade	Army National Guard	Army Reserve	Navy Reserve	Marine Corps Reserve	Air National Guard	Air Force Reserve	Total DoD	Coast Guard Reserve	Total Sel Res
O1	1.2%	1.1%	0.4%	0.1%	0.9%	0.4%	1.0%	1.6%	1.0%
O2	1.8%	2.0%	1.0%	0.1%	1.0%	1.0%	1.5%	2.4%	1.5%
O3	2.3%	4.3%	4.0%	1.4%	2.9%	5.0%	3.2%	4.7%	3.2%
O4	1.8%	5.1%	6.5%	2.5%	3.5%	8.1%	3.8%	3.6%	3.8%
O5	1.1%	3.7%	7.0%	2.8%	3.9%	6.4%	3.1%	1.9%	3.1%
O6	0.4%	1.2%	3.2%	1.0%	0.8%	1.9%	1.1%	0.6%	1.1%
O7	0.0%	0.0%	0.0%	0.0%	0.1%	0.1%	0.0%	0.0%	0.0%
O8	0.0%	0.0%	0.0%	0.0%	0.0%	0.0%	0.0%	0.0%	0.0%
O9	0.0%	0.0%	0.0%	0.0%	0.0%	0.0%	0.0%	0.0%	0.0%
O10	N/A	N/A	N/A	N/A	N/A	N/A	N/A	N/A	0.0%
O-Unknown	N/A	N/A	N/A	N/A	N/A	N/A	N/A	N/A	0.0%
<b>Total O1-O10</b>	<b>8.7%</b>	<b>17.5%</b>	<b>22.3%</b>	<b>7.7%</b>	<b>13.2%</b>	<b>23.0%</b>	<b>13.6%</b>	<b>14.7%</b>	<b>13.6%</b>
W1	0.4%	0.3%	0.0%	0.1%	N/A*	N/A*	0.2%	0.0%	0.2%
W2	0.6%	0.4%	0.1%	0.4%	N/A*	N/A*	0.3%	0.6%	0.4%
W3	0.4%	0.4%	0.1%	0.2%	N/A*	N/A*	0.3%	0.8%	0.3%
W4	0.4%	0.3%	0.1%	0.2%	N/A*	N/A*	0.3%	0.8%	0.3%
W5	0.1%	0.1%	0.0%	0.1%	N/A*	N/A*	0.1%	0.0%	0.1%
W-Unknown	N/A	N/A	N/A	N/A	N/A*	N/A*	N/A	N/A	N/A
<b>Total W1-W5</b>	<b>1.9%</b>	<b>1.4%</b>	<b>0.2%</b>	<b>0.9%</b>	<b>N/A*</b>	<b>N/A*</b>	<b>1.2%</b>	<b>2.2%</b>	<b>1.2%</b>
<b>Total Officers</b>	<b>10.6%</b>	<b>19.0%</b>	<b>22.5%</b>	<b>8.6%</b>	<b>13.2%</b>	<b>23.0%</b>	<b>14.8%</b>	<b>16.9%</b>	<b>14.9%</b>
E1	7.4%	5.3%	2.8%	5.4%	0.3%	0.8%	5.0%	0.1%	4.9%
E2	5.4%	4.0%	2.5%	9.7%	0.2%	0.7%	4.0%	0.9%	3.9%
E3	11.5%	9.2%	7.6%	39.1%	6.7%	3.5%	10.6%	5.2%	10.6%
E4	25.8%	20.6%	14.1%	15.3%	15.6%	15.7%	20.9%	31.0%	21.0%
E5	19.4%	16.4%	24.2%	12.1%	22.4%	16.2%	18.9%	17.2%	18.9%
E6	10.8%	12.2%	19.0%	5.0%	18.9%	19.5%	13.3%	16.2%	13.4%
E7	6.3%	8.4%	5.5%	2.9%	16.0%	14.2%	8.5%	9.2%	8.5%
E8	2.2%	4.0%	1.4%	1.3%	4.7%	4.9%	3.1%	1.9%	3.0%
E9	0.6%	0.9%	0.5%	0.5%	2.1%	1.6%	0.9%	1.2%	0.9%
E-Unknown	N/A	N/A	N/A	N/A	0.0%	0.0%	0.0%	N/A	0.0%
<b>Total Enlisted</b>	<b>89.4%</b>	<b>81.0%</b>	<b>77.5%</b>	<b>91.4%</b>	<b>86.8%</b>	<b>77.0%</b>	<b>85.2%</b>	<b>83.1%</b>	<b>85.1%</b>

\* The Air National Guard and Air Force Reserve do not have Warrant Officers.

*DMDC Reserve Components Common Personnel Data System (September 2007)*

## SELECTED RESERVE PERSONNEL (CONT.)

### 4.08. Number of Selected Reserve Officers and Enlisted Trends: 1990-2007

The total number of Selected Reserve personnel has decreased since 1990, with the number of officers decreasing from 178,278 to 124,225 and the number of enlisted decreasing from 987,058 to 712,031.

	1990	1995	2000	2005	2006	2007
Officers	178,278	149,340	133,355	125,528	124,420	124,225
Enlisted	987,058	803,852	739,852	703,477	709,510	712,031
<b>Total</b>	<b>1,165,336</b>	<b>953,192</b>	<b>873,207</b>	<b>829,005</b>	<b>833,930</b>	<b>836,256</b>

*DMDC Reserve Components Common Personnel Data System (September 1990, 1995, 2000, 2005, 2006, 2007)*

### 4.09. Ratio of Selected Reserve Officers to Enlisted by Reserve Component Trends: 2000-2007

Unlike the Active Duty, overall, the Selected Reserve has seen a slight increase in the ratio of officers to enlisted since 2000. In other words, there are fewer officers now for every enlisted member than there were seven years ago. This increase in ratios is greatest in the Air National Guard. Conversely, the Air Force Reserve had the greatest decrease in its respective ratio of officers to enlisted, meaning they now have more officers for every enlisted member than they did seven years ago.

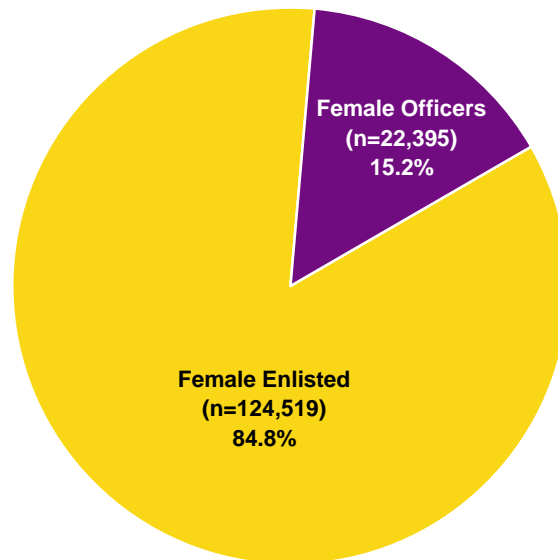
	Ratio of Officers to Enlisted			
	2000	2005	2006	2007
Army National Guard	1 to 8.4	1 to 8.1	1 to 8.4	1 to 8.4
Army Reserve	1 to 3.9	1 to 4.1	1 to 4.2	1 to 4.3
Navy Reserve	1 to 3.6	1 to 3.5	1 to 3.4	1 to 3.4
Marine Corps Reserve	1 to 9.0	1 to 10.7	1 to 11.1	1 to 10.6
Air National Guard	1 to 3.3	1 to 6.8	1 to 6.7	1 to 6.6
Air Force Reserve	1 to 7.0	1 to 3.5	1 to 3.4	1 to 3.4
<b>Total DoD</b>	<b>1 to 5.5</b>	<b>1 to 5.6</b>	<b>1 to 5.7</b>	<b>1 to 5.7</b>
Coast Guard Reserve	1 to 5.6	1 to 5.3	1 to 5.1	1 to 4.9
<b>Total Sel Res</b>	<b>1 to 5.5</b>	<b>1 to 5.6</b>	<b>1 to 5.7</b>	<b>1 to 5.7</b>

*DMDC Reserve Components Common Personnel Data System (September 2000, 2005, 2006, 2007)*

## WOMEN

### 4.10. Female Officers and Female Enlisted of the Selected Reserve (N=146,914)

The percent of Selected Reserve female officers (15.2%) and female enlisted (84.8%) is similar to the total percent of Selected Reserve officers (14.9%) and enlisted (85.1%).



*DMDC Reserve Components Common Personnel Data System (September 2007)*

### 4.11. Number and Ratio of Selected Reserve Female Officers and Female Enlisted by Reserve Component

The ratio of female officers to female enlisted across all Reserve components is 1 to 5.6. This ratio varies widely across the Reserve components, from the Army National Guard, which has one female officer for every 10.3 enlisted women, to the Air Force Reserve, which has one female officer for every 3.1 enlisted women.

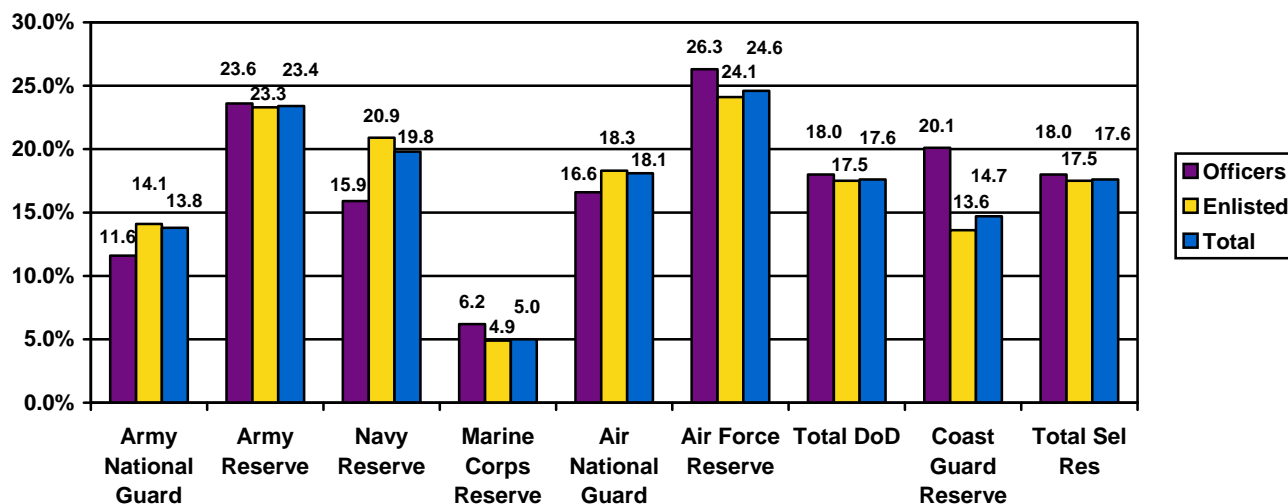
Reserve Component	Officers	Enlisted	Total	Ratio of Officers to Enlisted
Army National Guard	4,338	44,509	48,847	1 to 10.3
Army Reserve	8,476	35,912	44,388	1 to 4.2
Navy Reserve	2,493	11,350	13,843	1 to 4.6
Marine Corps Reserve	205	1,726	1,931	1 to 8.4
Air National Guard	2,324	16,908	19,232	1 to 7.3
Air Force Reserve	4,295	13,233	17,528	1 to 3.1
<b>Total DoD</b>	<b>22,131</b>	<b>123,638</b>	<b>145,769</b>	<b>1 to 5.6</b>
Coast Guard Reserve	264	881	1,145	1 to 3.3
<b>Total Sel Res</b>	<b>22,395</b>	<b>124,519</b>	<b>146,914</b>	<b>1 to 5.6</b>

*DMDC Reserve Components Common Personnel Data System (September 2007)*

## WOMEN (CONT.)

### 4.12. Percent of Female Officers and Female Enlisted in the Selected Reserve by Reserve Component

The percent of Selected Reserve officers, the percent of Selected Reserve enlisted and the percent of the total Selected Reserve that are women are depicted in this chart by Reserve component. Women make up 17.6 percent of the total Selected Reserve. In comparison, in 2007, 56.6 percent of the U.S. civilian work force 16 years old and over was female. The Air Force Reserve has the highest percent of Selected Reserve women at 24.6 percent, followed closely by the Army Reserve, at 23.4 percent.



*DMDC Reserve Components Common Personnel Data System (September 2007); Bureau of Labor Statistics (2007)*

### 4.13. Number of Women in the Selected Reserve by Pay Grade and Reserve Component

The number of females by pay grade is presented for each component of the Selected Reserve. The Army National Guard is the largest Reserve component and also has the largest number of women at 48,847. Similarly, the Coast Guard Reserve is the smallest component and has the lowest number of women at 1,145.

Reserve Component	O1-O3	O4-O6	O7-O10	W1-W5	E1-E4	E5-E6	E7-E9	Total
Army National Guard	2,517	1,221	5	595	29,549	11,967	2,993	48,847
Army Reserve	4,054	4,034	7	381	18,646	12,046	5,220	44,388
Navy Reserve	693	1,781	7	12	4,493	6,007	850	13,843
Marine Corps Reserve	58	120	1	26	1,235	407	84	1,931
Air National Guard	1,124	1,186	14	0	5,436	7,416	4,056	19,232
Air Force Reserve	1,510	2,778	7	0	4,479	5,574	3,180	17,528
<b>Total DoD</b>	<b>9,956</b>	<b>11,120</b>	<b>41</b>	<b>1,014</b>	<b>63,838</b>	<b>43,417</b>	<b>16,383</b>	<b>145,769</b>
Coast Guard Reserve	151	95	0	18	382	404	95	1,145
<b>Total Sel Res</b>	<b>10,107</b>	<b>11,215</b>	<b>41</b>	<b>1,032</b>	<b>64,220</b>	<b>43,821</b>	<b>16,478</b>	<b>146,914</b>

\* The Air National Guard and the Air Force Reserve do not have Warrant Officers.

*DMDC Reserve Components Common Personnel Data System (September 2007)*

**WOMEN (CONT.)****4.14. Number of Selected Reserve Female Officers and  
Female Enlisted Trends:  
1990-2007**

The total number of female Selected Reserve members has decreased since 1990, with the number of female officers decreasing from 25,667 to 22,395 and the number of female enlisted decreasing from 126,571 to 124,519.

Year	Army National Guard		Army Reserve		Navy Reserve		Marine Corps Reserve	
	Officers	Enlisted	Officers	Enlisted	Officers	Enlisted	Officers	Enlisted
1990	3,707	27,758	12,535	50,581	4,240	18,811	177	1,577
1995	3,514	27,204	11,139	42,818	3,369	13,987	275	1,338
2000	3,435	36,461	10,147	41,222	3,222	13,783	237	1,644
2005	3,924	38,836	8,760	35,079	2,813	12,907	198	1,697
2006	4,060	42,534	8,629	35,566	2,546	11,768	189	1,677
2007	4,338	44,509	8,476	35,912	2,493	11,350	205	1,726

Year	Air National Guard		Air Force Reserve		Total DoD		Coast Guard Reserve		Total Sel Res	
	Officers	Enlisted	Officers	Enlisted	Officers	Enlisted	Officers	Enlisted	Officers	Enlisted
1990	1,427	14,098	3,468	12,489	<b>25,554</b>	<b>125,314</b>	113	1,257	<b>25,667</b>	<b>126,571</b>
1995	1,708	13,987	3,887	11,706	<b>23,892</b>	<b>111,040</b>	111	763	<b>24,003</b>	<b>111,803</b>
2000	1,985	15,888	4,089	11,641	<b>23,115</b>	<b>120,639</b>	181	928	<b>23,296</b>	<b>121,567</b>
2005	2,188	16,815	4,271	13,600	<b>22,154</b>	<b>118,934</b>	229	975	<b>22,383</b>	<b>119,909</b>
2006	2,221	16,751	4,299	13,416	<b>21,944</b>	<b>121,712</b>	249	923	<b>22,193</b>	<b>122,635</b>
2007	2,324	16,908	4,295	13,233	<b>22,131</b>	<b>123,638</b>	264	881	<b>22,395</b>	<b>124,519</b>

*DMDC Reserve Components Common Personnel Data System  
(September 1990, 1995, 2000, 2005, 2006, 2007)*

## WOMEN (CONT.)

### 4.15. Percent of Female Officers and Female Enlisted in Selected Reserve Trends: 1990-2007

The percent of female officers and female enlisted in relation to the total number of Selected Reserve officers and enlisted is depicted in this chart. For 2007, just over one-sixth (17.6%) of the total Selected Reserve was female.

Year	Army National Guard		Army Reserve		Navy Reserve		Marine Corps Reserve	
	Officers	Enlisted	Officers	Enlisted	Officers	Enlisted	Officers	Enlisted
1990	7.4%	7.0%	20.3%	20.4%	14.3%	15.3%	4.9%	3.9%
1995	8.1%	8.2%	22.4%	22.4%	16.2%	17.5%	5.9%	3.7%
2000	9.4%	11.6%	24.8%	25.0%	16.9%	20.0%	6.0%	4.6%
2005	10.7%	13.1%	23.7%	23.1%	16.6%	21.7%	5.8%	4.6%
2006	11.0%	13.7%	23.7%	23.2%	15.8%	21.6%	5.8%	4.6%
2007	11.6%	14.1%	23.6%	23.3%	15.9%	20.9%	6.2%	4.9%

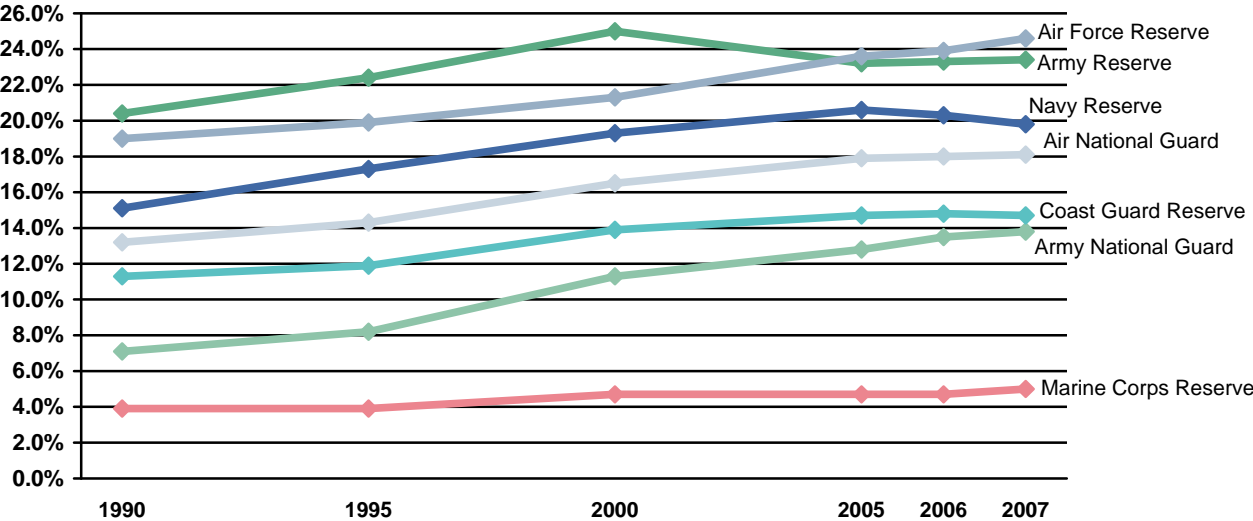
Year	Air National Guard		Air Force Reserve		Total DoD		Coast Guard Reserve		Total Sel Res	
	Officers	Enlisted	Officers	Enlisted	Officers	Enlisted	Officers	Enlisted	Officers	Enlisted
1990	10.1%	13.6%	20.1%	18.8%	14.5%	12.8%	6.8%	12.0%	14.4%	12.8%
1995	12.6%	14.5%	24.1%	18.8%	16.1%	13.9%	9.5%	12.4%	16.1%	13.9%
2000	14.8%	16.7%	24.1%	20.5%	17.7%	16.4%	15.0%	13.7%	17.7%	16.4%
2005	16.0%	18.1%	25.6%	23.0%	17.8%	17.1%	17.7%	14.2%	17.8%	17.0%
2006	16.1%	18.2%	25.8%	23.4%	17.8%	17.3%	19.2%	13.9%	17.8%	17.3%
2007	16.6%	18.3%	26.3%	24.1%	18.0%	17.5%	20.1%	13.6%	18.0%	17.5%

*DMDC Reserve Components Common Personnel Data System (September 1990, 1995, 2000, 2005, 2006, 2007)*

**WOMEN (CONT.)**

**4.16. Percent of Women in the Selected Reserve by Reserve Component  
Trends: 1990-2007**

The number of women as a percent of the total number of members for each Reserve component is depicted in the chart below. While the percent of women in each Reserve component has fluctuated slightly over the past 17 years, it is higher in 2007 than it was in 1990 for every Reserve component.



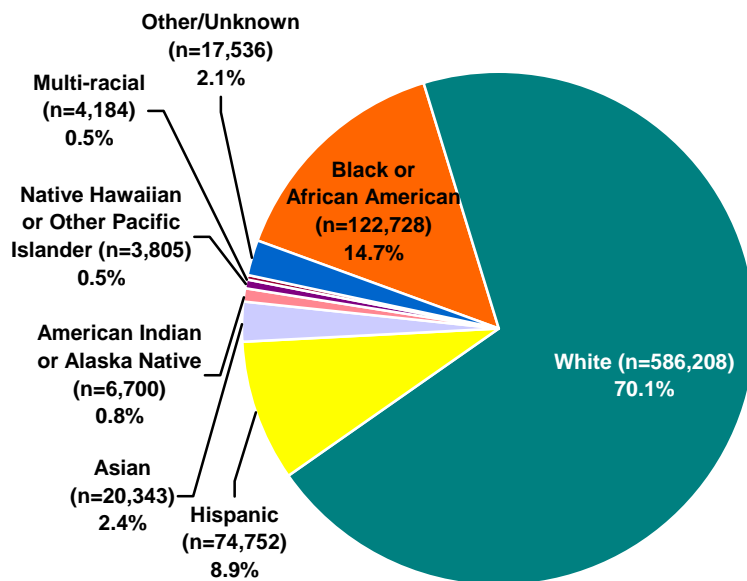
Note: Data are represented ONLY for the years indicated. Data for the years in between are NOT represented in this graph.

*DMDC Reserve Components Common Personnel Data System (September 1990, 1995, 2000, 2005, 2006, 2007)*

## RACE/ETHNICITY

### 4.17. Race/Ethnicity of Selected Reserve (N=836,256)

Members who report themselves as White represent the largest proportion of Selected Reserve members (70.1%), while Black or African American members represent 14.7 percent. Members who are Hispanic, Asian, American Indian or Alaska Native, and Native Hawaiian or other Pacific Islander make up 8.9 percent, 2.4 percent, 0.8 percent, and 0.5 percent, respectively. Less than one percent (0.5%) of Selected Reserve members report themselves as multi-racial.



DMDC Reserve Components Common Personnel Data System (September 2007)

## RACE/ETHNICITY (CONT.)

### 4.18. Percent of Selected Reserve Minorities and Non-minorities by Reserve Component and Pay Grade

Minority members represent a little less than one-third (29.9%) of the Selected Reserve. The lowest proportion of minority Selected Reserve members is found among high-ranking officers in nearly all Reserve components.

Pay Grade	Army National Guard		Army Reserve		Navy Reserve		Marine Corps Reserve	
	Minority	Non-minority	Minority	Non-minority	Minority	Non-minority	Minority	Non-minority
O1-O3	19.8%	80.2%	34.1%	65.9%	32.5%	67.5%	24.7%	75.3%
O4-O6	13.9%	86.1%	25.9%	74.1%	20.8%	79.2%	16.6%	83.4%
O7-O10	11.6%	88.4%	13.9%	86.1%	16.0%	84.0%	20.0%	80.0%
W1-W5	11.5%	88.5%	26.8%	73.2%	28.1%	71.9%	32.9%	67.1%
E1-E4	27.1%	72.9%	39.8%	60.2%	53.7%	46.3%	27.8%	72.2%
E5-E6	26.7%	73.3%	45.1%	54.9%	41.3%	58.7%	40.5%	59.5%
E7-E9	22.0%	78.0%	46.6%	53.4%	23.3%	76.7%	37.6%	62.4%
<b>Total</b>	<b>25.4%</b>	<b>74.6%</b>	<b>40.2%</b>	<b>59.8%</b>	<b>39.4%</b>	<b>60.6%</b>	<b>29.8%</b>	<b>70.2%</b>

Pay Grade	Air National Guard		Air Force Reserve		Total DoD		Coast Guard Reserve		Total Sel Res	
	Minority	Non-minority	Minority	Non-minority	Minority	Non-minority	Minority	Non-minority	Minority	Non-minority
O1-O3	17.0%	83.0%	23.8%	76.2%	25.2%	74.8%	35.3%	64.7%	25.4%	74.6%
O4-O6	11.4%	88.6%	13.7%	86.3%	18.4%	81.6%	17.6%	82.4%	18.4%	81.6%
O7-O10	9.3%	90.7%	6.5%	93.5%	11.3%	88.7%	0.0%	100.0%	11.2%	88.8%
W1-W5	N/A*	N/A*	N/A*	N/A*	16.7%	83.3%	11.8%	88.2%	16.6%	83.4%
E1-E4	23.5%	76.5%	40.0%	60.0%	31.8%	68.2%	25.1%	74.9%	31.7%	68.3%
E5-E6	22.6%	77.4%	34.5%	65.5%	32.5%	67.5%	26.0%	74.0%	32.5%	67.5%
E7-E9	18.2%	81.8%	27.9%	72.1%	28.3%	71.7%	10.6%	89.4%	28.2%	71.8%
<b>Total</b>	<b>20.6%</b>	<b>79.4%</b>	<b>30.1%</b>	<b>69.9%</b>	<b>30.0%</b>	<b>70.0%</b>	<b>23.7%</b>	<b>76.3%</b>	<b>29.9%</b>	<b>70.1%</b>

\* The Air National Guard and Air Force Reserve do not have Warrant Officers.

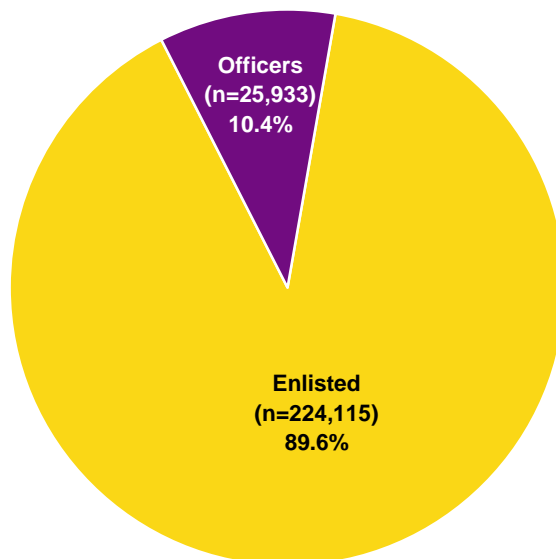
Note: Minority includes Black or African American, Hispanic, Asian, American Indian or Alaska Native, Native Hawaiian or Other Pacific Islander, Multi-racial and Other/Unknown.

*DMDC Reserve Components Common Personnel Data System (September 2007)*

**RACE/ETHNICITY (CONT.)**

**4.19. Minority Officers and Minority Enlisted of the Selected Reserve (N=250,048)**

The Selected Reserve force has 250,048 minority members. Among the minority Selected Reserve members, 10.4 percent are officers and 89.6 percent are enlisted members.



*DMDC Reserve Components Common Personnel Data System (September 2007)*

**4.20. Number and Ratio of Selected Reserve Minority Officers and Minority Enlisted by Reserve Component**

The ratio of minority officers to minority enlisted personnel varies widely across the Reserve components. At one end of the spectrum, the Coast Guard Reserve has one minority officer for every 4.4 minority enlisted personnel. At the other end, the Marine Corps Reserve has one minority officer for every 16.5 minority enlisted personnel. The overall ratio of minority officers to minority enlisted personnel (1 to 8.6) is lower than the total ratio of all Selected Reserve officers to all Selected Reserve enlisted members (1 to 5.7).

Reserve Component	Officers	Enlisted	Total	Ratio of Officers to Enlisted
Army National Guard	6,143	83,386	89,529	1 to 13.6
Army Reserve	10,483	65,835	76,318	1 to 6.3
Navy Reserve	3,733	23,799	27,532	1 to 6.4
Marine Corps Reserve	656	10,818	11,474	1 to 16.5
Air National Guard	1,887	20,028	21,915	1 to 10.6
Air Force Reserve	2,691	18,744	21,435	1 to 7.0
<b>Total DoD</b>	<b>25,593</b>	<b>222,610</b>	<b>248,203</b>	<b>1 to 8.7</b>
Coast Guard Reserve	340	1,505	1,845	1 to 4.4
<b>Total Sel Res</b>	<b>25,933</b>	<b>224,115</b>	<b>250,048</b>	<b>1 to 8.6</b>

*DMDC Reserve Components Common Personnel Data System (September 2007)*

## RACE/ETHNICITY (CONT.)

### 4.21. Number of Selected Reserve Minority Officers and Enlisted by Race/Ethnicity and Reserve Component

The number of Selected Reserve minority officers and enlisted personnel by race/ethnicity is presented for each Reserve component. In total, there are 25,933 minority officers and 224,115 minority enlisted members currently serving in the Selected Reserve.

Reserve Component	Black or African American		Hispanic		Asian		Native Hawaiian or other Pacific Islander	
	Officers	Enlisted	Officers	Enlisted	Officers	Enlisted	Officers	Enlisted
Army National Guard	2,760	43,713	1,786	25,377	754	5,865	N/A*	N/A*
Army Reserve	6,077	36,372	2,314	20,288	1,053	4,783	207	1,808
Navy Reserve	811	9,692	716	7,592	463	2,234	28	267
Marine Corps Reserve	175	2,709	180	4,507	59	1,203	12	203
Air National Guard	678	8,269	521	5,660	259	2,159	39	652
Air Force Reserve	1,071	10,049	618	4,512	346	1,130	46	527
<b>Total DoD</b>	<b>11,572</b>	<b>110,804</b>	<b>6,135</b>	<b>67,936</b>	<b>2,934</b>	<b>17,374</b>	<b>332</b>	<b>3,457</b>
Coast Guard Reserve	44	308	78	603	7	28	1	15
<b>Total Sel Res</b>	<b>11,616</b>	<b>111,112</b>	<b>6,213</b>	<b>68,539</b>	<b>2,941</b>	<b>17,402</b>	<b>333</b>	<b>3,472</b>

Reserve Component	American Indian or Alaska Native		Multi-racial		Other/Unknown		Minority Total	
	Officers	Enlisted	Officers	Enlisted	Officers	Enlisted	Officers	Enlisted
Army National Guard	168	2,735	N/A*	N/A*	675	5,696	6,143	83,386
Army Reserve	170	1,066	N/A*	N/A*	662	1,518	10,483	65,835
Navy Reserve	64	1,135	234	1,331	1,417	1,548	3,733	23,799
Marine Corps Reserve	29	215	28	249	173	1,732	656	10,818
Air National Guard	64	669	100	934	226	1,685	1,887	20,028
Air Force Reserve	52	251	112	617	446	1,658	2,691	18,744
<b>Total DoD</b>	<b>547</b>	<b>6,071</b>	<b>474</b>	<b>3,131</b>	<b>3,599</b>	<b>13,837</b>	<b>25,593</b>	<b>222,610</b>
Coast Guard Reserve	13	69	175	404	22	78	340	1,505
<b>Total Sel Res</b>	<b>560</b>	<b>6,140</b>	<b>649</b>	<b>3,535</b>	<b>3,621</b>	<b>13,915</b>	<b>25,933</b>	<b>224,115</b>

\* The Army National Guard does not report "Native Hawaiian or other Pacific Islander" or "Multi-racial." The Army Reserve does not report "Multi-racial."

*DMDC Reserve Components Common Personnel Data System (September 2007)*

## RACE/ETHNICITY (CONT.)

### 4.22. Percent of Selected Reserve Minority Officers and Enlisted by Race/Ethnicity and Reserve Component

Percents reflect the prevalence of minority members in each Reserve component among officer and enlisted members. The Army Reserve has the highest percent of minority officers (29.1%) followed closely by the Coast Guard Reserve (25.8%) and Navy Reserve (23.7%), while the Navy Reserve has the highest percent of minority enlisted (43.9%) followed closely by the Army Reserve (42.8%).

Reserve Component	Black or African American		Hispanic		Asian		Native Hawaiian or other Pacific Islander	
	Officers	Enlisted	Officers	Enlisted	Officers	Enlisted	Officers	Enlisted
Army National Guard	7.4%	13.9%	4.8%	8.1%	2.0%	1.9%	N/A*	N/A*
Army Reserve	16.9%	23.6%	6.4%	13.2%	2.9%	3.1%	0.6%	1.2%
Navy Reserve	5.2%	17.9%	4.6%	14.0%	2.9%	4.1%	0.2%	0.5%
Marine Corps Reserve	5.3%	7.7%	5.4%	12.8%	1.8%	3.4%	0.4%	0.6%
Air National Guard	4.8%	9.0%	3.7%	6.1%	1.8%	2.3%	0.3%	0.7%
Air Force Reserve	6.6%	18.3%	3.8%	8.2%	2.1%	2.1%	0.3%	1.0%
<b>Total DoD</b>	<b>9.4%</b>	<b>15.7%</b>	<b>5.0%</b>	<b>9.6%</b>	<b>2.4%</b>	<b>2.5%</b>	<b>0.3%</b>	<b>0.5%</b>
Coast Guard Reserve	3.3%	4.8%	5.9%	9.3%	0.5%	0.4%	0.1%	0.2%
<b>Total Sel Res</b>	<b>9.4%</b>	<b>15.6%</b>	<b>5.0%</b>	<b>9.6%</b>	<b>2.4%</b>	<b>2.4%</b>	<b>0.3%</b>	<b>0.5%</b>

Reserve Component	American Indian or Alaska Native		Multi-racial		Other/Unknown		Minority Total	
	Officers	Enlisted	Officers	Enlisted	Officers	Enlisted	Officers	Enlisted
Army National Guard	0.4%	0.9%	N/A*	N/A*	1.8%	1.8%	16.4%	26.5%
Army Reserve	0.5%	0.7%	N/A*	N/A*	1.8%	1.0%	29.1%	42.8%
Navy Reserve	0.4%	2.1%	1.5%	2.5%	9.0%	2.9%	23.7%	43.9%
Marine Corps Reserve	0.9%	0.6%	0.8%	0.7%	5.2%	4.9%	19.7%	30.7%
Air National Guard	0.5%	0.7%	0.7%	1.0%	1.6%	1.8%	13.5%	21.7%
Air Force Reserve	0.3%	0.5%	0.7%	1.1%	2.7%	3.0%	16.5%	34.2%
<b>Total DoD</b>	<b>0.4%</b>	<b>0.9%</b>	<b>0.4%</b>	<b>0.4%</b>	<b>2.9%</b>	<b>2.0%</b>	<b>20.8%</b>	<b>31.6%</b>
Coast Guard Reserve	1.0%	1.1%	13.3%	6.3%	1.7%	1.2%	25.8%	23.3%
<b>Total Sel Res</b>	<b>0.5%</b>	<b>0.9%</b>	<b>0.5%</b>	<b>0.5%</b>	<b>2.9%</b>	<b>2.0%</b>	<b>20.9%</b>	<b>31.5%</b>

\* The Army National Guard does not report "Native Hawaiian or other Pacific Islander" or "Multi-racial." The Army Reserve does not report "Multi-racial."

*DMDC Reserve Components Common Personnel Data System (September 2007)*

## RACE/ETHNICITY (CONT.)

### 4.23. Number of Selected Reserve Minority Officers and Enlisted by Reserve Component Trends: 1990-2007

The number of minority Selected Reserve officers has increased from 23,000 in 1990 to 25,933 in 2007, despite the decrease in the number of Selected Reserve officers overall since 1990.

Reserve Component	1990		1995		2000	
	Officers	Enlisted	Officers	Enlisted	Officers	Enlisted
Army National Guard	5,761	104,719	5,476	89,577	5,249	88,143
Army Reserve	11,200	95,804	9,900	81,018	10,582	74,275
Navy Reserve	3,093	26,906	2,754	20,592	3,829	23,298
Marine Corps Reserve	261	12,058	407	10,830	442	11,790
Air National Guard	1,118	16,714	1,420	17,422	1,715	19,728
Air Force Reserve	1,499	17,791	1,822	17,140	2,130	16,727
<b>Total DoD</b>	<b>22,932</b>	<b>273,992</b>	<b>21,779</b>	<b>236,579</b>	<b>23,947</b>	<b>233,961</b>
Coast Guard Reserve	68	1,372	70	780	123	1,038
<b>Total Sel Res</b>	<b>23,000</b>	<b>275,364</b>	<b>21,849</b>	<b>237,359</b>	<b>24,070</b>	<b>234,999</b>

Reserve Component	2005		2006		2007	
	Officers	Enlisted	Officers	Enlisted	Officers	Enlisted
Army National Guard	5,852	80,589	6,051	82,847	6,143	83,386
Army Reserve	10,412	66,949	10,509	67,218	10,483	65,835
Navy Reserve	4,217	24,144	4,042	23,142	3,733	23,799
Marine Corps Reserve	654	12,304	643	11,825	656	10,818
Air National Guard	1,885	20,605	1,928	20,474	1,887	20,028
Air Force Reserve	2,659	19,829	2,739	19,490	2,691	18,744
<b>Total DoD</b>	<b>25,679</b>	<b>224,420</b>	<b>25,912</b>	<b>224,996</b>	<b>25,593</b>	<b>222,610</b>
Coast Guard Reserve	215	1,378	289	1,426	340	1,505
<b>Total Sel Res</b>	<b>25,894</b>	<b>225,798</b>	<b>26,201</b>	<b>226,422</b>	<b>25,933</b>	<b>224,115</b>

Note: For years 1990 through 2002, information on only Active Duty members' race were available. For years 2003 through 2006, information on Active Duty members' race and ethnicity were available. Ethnicity was used to identify "Hispanic", "American Indian or Alaska Native", and "Asian" members, while race was used to identify "Black or African American", "Native Hawaiian or other Pacific Islander", "White", and "Multi-racial" members. To conform to the latest Office of Management and Budget (OMB) directives, ethnicity was used to identify "Hispanic" members, while race was used to identify all other minority designations in 2007.

*DMDC Reserve Components Common Personnel Data System (September 1990, 1995, 2000, 2005, 2006, 2007)*

## RACE/ETHNICITY (CONT.)

### 4.24. Percent of Selected Reserve Minority Officers and Enlisted by Reserve Component Trends: 1990-2007

The percent of minorities who are either officer or enlisted members in relation to the total number of Selected Reserve officer or enlisted members for each Reserve component is depicted in this table. For 2007, 31.5 percent of enlisted and 20.9 percent of officers identify themselves as a minority. This is an increase from 1990 in which 24.0 percent of enlisted and 12.3 percent of officers identified themselves as a minority.

Reserve Component	1990		1995		2000	
	Officers	Enlisted	Officers	Enlisted	Officers	Enlisted
Army National Guard	10.9%	22.7%	12.6%	27.0%	14.0%	27.9%
Army Reserve	16.0%	32.6%	19.9%	42.3%	25.3%	45.0%
Navy Reserve	9.3%	16.7%	13.3%	25.8%	20.2%	34.3%
Marine Corps Reserve	11.2%	26.5%	8.8%	29.8%	11.1%	33.0%
Air National Guard	10.0%	16.8%	10.5%	18.1%	12.9%	21.2%
Air Force Reserve	10.6%	25.7%	11.3%	27.6%	12.8%	30.0%
<b>Total DoD</b>	<b>12.3%</b>	<b>24.2%</b>	<b>14.7%</b>	<b>29.7%</b>	<b>18.1%</b>	<b>31.9%</b>
Coast Guard Reserve	4.2%	7.5%	6.0%	12.6%	10.2%	15.4%
<b>Total Sel Res</b>	<b>12.3%</b>	<b>24.0%</b>	<b>14.6%</b>	<b>29.5%</b>	<b>18.0%</b>	<b>31.8%</b>

Reserve Component	2005		2006		2007	
	Officers	Enlisted	Officers	Enlisted	Officers	Enlisted
Army National Guard	16.0%	27.2%	16.4%	26.8%	16.4%	26.5%
Army Reserve	28.2%	44.0%	28.9%	43.8%	29.1%	42.8%
Navy Reserve	24.8%	40.6%	25.0%	42.6%	23.7%	43.9%
Marine Corps Reserve	19.2%	33.7%	19.7%	32.6%	19.7%	30.7%
Air National Guard	13.8%	22.2%	14.0%	22.3%	13.5%	21.7%
Air Force Reserve	15.9%	33.5%	16.4%	34.0%	16.5%	34.2%
<b>Total DoD</b>	<b>20.7%</b>	<b>32.2%</b>	<b>21.0%</b>	<b>32.0%</b>	<b>20.8%</b>	<b>31.6%</b>
Coast Guard Reserve	16.6%	20.0%	22.3%	21.4%	25.8%	23.3%
<b>Total Sel Res</b>	<b>20.6%</b>	<b>32.1%</b>	<b>21.1%</b>	<b>31.9%</b>	<b>20.9%</b>	<b>31.5%</b>

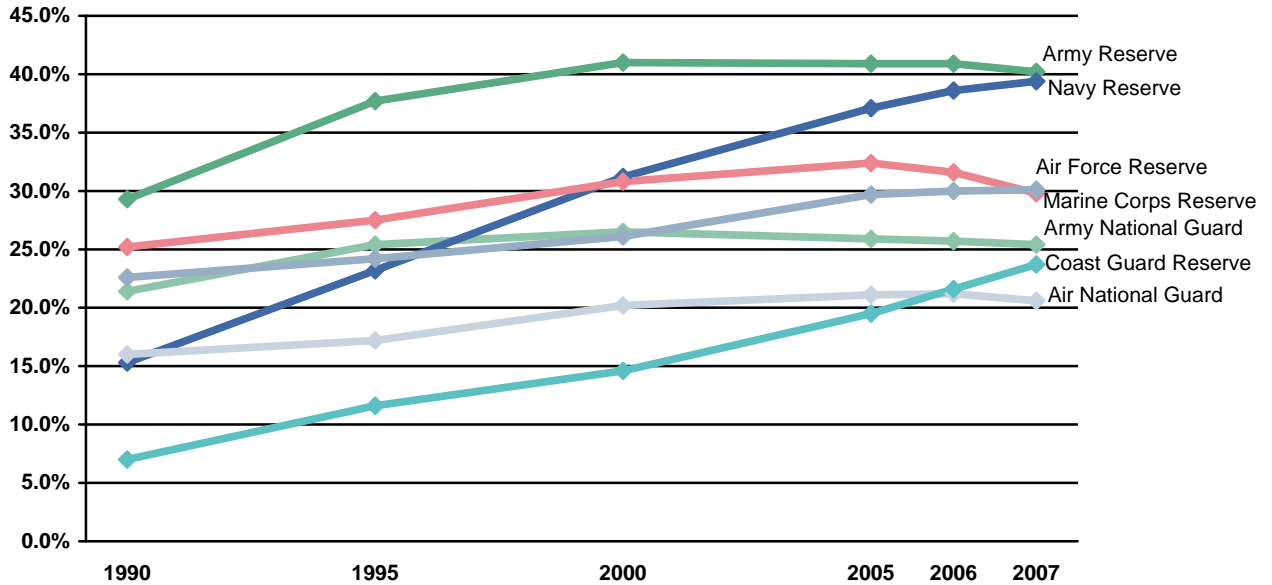
Note: For years 1990 through 2002, information on only Active Duty members' race were available. For years 2003 through 2006, information on Active Duty members' race and ethnicity were available. Ethnicity was used to identify "Hispanic", "American Indian or Alaska Native", and "Asian" members, while race was used to identify "Black or African American", "Native Hawaiian or other Pacific Islander", "White", and "Multi-racial" members. To conform to the latest Office of Management and Budget (OMB) directives, ethnicity was used to identify "Hispanic" members, while race was used to identify all other minority designations in 2007.

*DMDC Reserve Components Common Personnel Data System (September 1990, 1995, 2000, 2005, 2006, 2007)*

**RACE/ETHNICITY (CONT.)**

**4.25. Percent of Minorities in the Selected Reserve by Reserve Component Trends: 1990-2007**

The percentage of minorities in the Selected Reserve has increased between 1990 and 2007 for all Reserve components. The largest and smallest increases were observed in the Navy Reserve (+24.1%) and the Army National Guard (+4.0%), respectively.



Note: Data are represented ONLY for the years indicated. Data for the years in between are NOT represented in this graph.

Note: For years 1990 through 2002, information on only Active Duty members' race were available. For years 2003 through 2006, information on Active Duty members' race and ethnicity were available. Ethnicity was used to identify "Hispanic", "American Indian or Alaska Native", and "Asian" members, while race was used to identify "Black or African American", "Native Hawaiian or other Pacific Islander", "White", and "Multi-racial" members. To conform to the latest Office of Management and Budget (OMB) directives, ethnicity was used to identify "Hispanic" members, while race was used to identify all other minority designations in 2007.

*DMDC Reserve Components Common Personnel Data System (September 1990, 1995, 2000, 2005, 2006, 2007)*

## GEOGRAPHIC LOCATION

### 4.26. Worldwide Geographic Location of the Selected Reserve

Most of the Selected Reserve members are located in the United States.

Location of Selected Reserve	N
United States, U.S. Territories, Special Locations	828,974
Europe	582
East Asia	285
North Africa	1,858
Western Hemisphere	23
Other/Unknown/Ships Afloat	4,534
<b>Total Sel Res</b>	<b>836,256</b>

*DMDC Reserve Components Common Personnel Data System (September 2007)*

### 4.27. Worldwide Geographic Location by Reserve Component

Across all Reserve components, the largest number of personnel is located in the United States and its territories. A small number of personnel are located outside of the U.S. in the Marine Corps Reserve (3,113), Navy Reserve (2,983), Air Force Reserve (609), Army Reserve (569), and Air National Guard (8).

Location of Selected Reserve	Army National Guard	Army Reserve	Navy Reserve	Marine Corps Reserve	Air National Guard	Air Force Reserve	Total DoD	Coast Guard Reserve	Total Sel Res
United States, U.S. Territories, Special Locations	352,707	189,313	66,950	35,444	106,246	70,537	821,197	7,777	828,974
Europe	0	0	117	2	7	456	582	0	582
East Asia	0	0	157	8	1	119	285	0	285
North Africa	0	0	1,857	0	0	1	1,858	0	1,858
Western Hemisphere	0	0	23	0	0	0	23	0	23
Other/Unknown/Ships Afloat	0	569	829	3,103	0	33	4,534	0	4,534
<b>Total</b>	<b>352,707</b>	<b>189,882</b>	<b>69,933</b>	<b>38,557</b>	<b>106,254</b>	<b>71,146</b>	<b>828,479</b>	<b>7,777</b>	<b>836,256</b>

*DMDC Reserve Components Common Personnel Data System (September 2007)*

### 4.28. Geographic Location Number Trends: 2000-2007

The number of Selected Reserve members by geographic location from 2000 to 2007 is presented in the table below. Since 2000, the number of Selected Reserve members in Europe, East Asia, and North Africa has increased.

Location of Selected Reserve	2000	2005	2006	2007
United States, U.S. Territories	852,033	821,355	826,030	828,974
Europe	234	517	553	582
East Asia	93	262	290	285
North Africa	2	463	1,798	1,858
Western Hemisphere	1	44	68	23
Unknown/Other/Ships Afloat	20,844	6,364	5,191	4,534

*DMDC Reserve Components Common Personnel Data System (September 2000, 2005, 2006, 2007)*

## GEOGRAPHIC LOCATION (CONT.)

### 4.29. Geographic Location of the Selected Reserve within the United States

A total of 811,125 Selected Reservists reside in the 50 states and the District of Columbia. Exactly half (50.0%) of the Selected Reserve live in thirteen states (California, Texas, Florida, Pennsylvania, New York, Georgia, Ohio, Alabama, Illinois, Virginia, Missouri, Minnesota, and North Carolina). The number and percent of Selected Reserve members per state are presented below in descending order.

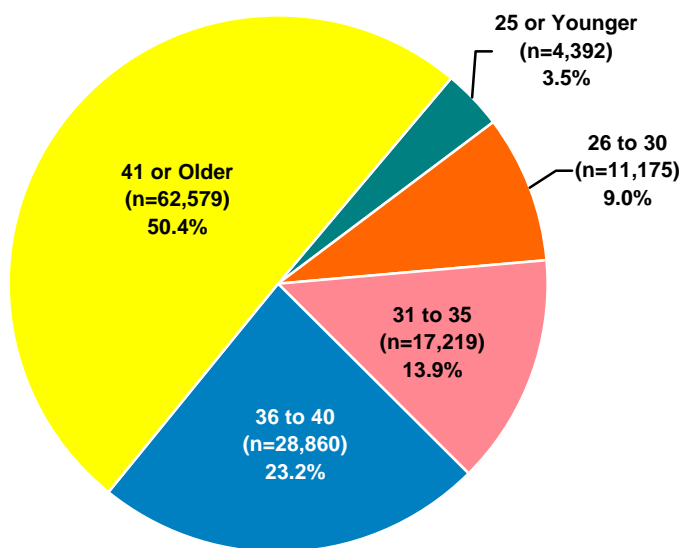
Rank	State	Number of Selected Reserve	Percent of Sel Res Living in U.S.	Cumulative Percent	Rank	State	Number of Selected Reserve	Percent of Sel Res Living in U.S.	Cumulative Percent
1	California	56,054	6.9%	6.9%	27	Kentucky	13,041	1.6%	79.2%
2	Texas	52,233	6.4%	13.4%	28	Arizona	12,757	1.6%	80.8%
3	Florida	35,112	4.3%	17.7%	29	Kansas	12,550	1.5%	82.3%
4	Pennsylvania	34,027	4.2%	21.9%	30	Iowa	12,055	1.5%	83.8%
5	New York	29,600	3.6%	25.5%	31	Colorado	11,664	1.4%	85.3%
6	Georgia	28,248	3.5%	29.0%	32	Utah	11,467	1.4%	86.7%
7	Ohio	27,253	3.4%	32.4%	33	Oregon	10,480	1.3%	88.0%
8	Alabama	25,532	3.1%	35.5%	34	Hawaii	9,471	1.2%	89.1%
9	Illinois	24,852	3.1%	38.6%	35	West Virginia	8,856	1.1%	90.2%
10	Virginia	24,516	3.0%	41.6%	36	Nebraska	6,842	0.8%	91.1%
11	Missouri	23,211	2.9%	44.5%	37	District of Columbia	6,696	0.8%	91.9%
12	Minnesota	22,783	2.8%	47.3%	38	Connecticut	6,212	0.8%	92.7%
13	North Carolina	22,503	2.8%	50.0%	39	Idaho	5,756	0.7%	93.4%
14	Tennessee	20,084	2.5%	52.5%	40	Nevada	5,345	0.7%	94.0%
15	Indiana	19,421	2.4%	54.9%	41	New Mexico	4,985	0.6%	94.7%
16	Washington	19,291	2.4%	57.3%	42	South Dakota	4,812	0.6%	95.2%
17	Louisiana	18,167	2.2%	59.5%	43	Delaware	4,805	0.6%	95.8%
18	South Carolina	17,917	2.2%	61.7%	44	Rhode Island	4,672	0.6%	96.4%
19	Michigan	17,914	2.2%	64.0%	45	Montana	4,664	0.6%	97.0%
20	Mississippi	17,108	2.1%	66.1%	46	Alaska	4,625	0.6%	97.6%
21	New Jersey	16,126	2.0%	68.0%	47	North Dakota	4,607	0.6%	98.1%
22	Maryland	15,899	2.0%	70.0%	48	Maine	4,563	0.6%	98.7%
23	Wisconsin	15,783	1.9%	72.0%	49	Vermont	3,826	0.5%	99.2%
24	Massachusetts	15,675	1.9%	73.9%	50	New Hampshire	3,662	0.5%	99.6%
25	Arkansas	15,204	1.9%	75.8%	51	Wyoming	3,136	0.4%	100.0%
26	Oklahoma	15,063	1.9%	77.6%		<b>Total Sel Res in U.S.</b>	<b>811,125</b>	<b>100.0%</b>	

*DMDC Reserve Components Common Personnel Data System (September 2007)*

**AGE**

**4.30. Age of Selected Reserve Officers  
(N=124,225)**

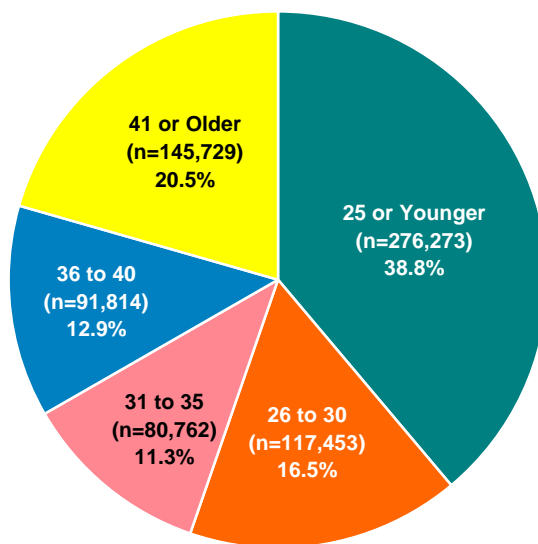
Selected Reserve officers are significantly older than Active Duty officers, with 73.6 percent who are 36 years of age or older, as compared to 44.2 percent of Active Duty officers.



*DMDC Reserve Components Common Personnel Data System (September 2007)*

**4.31. Age of Selected Reserve Enlisted  
(N=712,031)**

Selected Reserve enlisted are younger than Selected Reserve officers, with 55.3 percent 30 years of age or younger, as compared to 12.5 percent of officers. However, Active Duty enlisted are even younger, with 72.6 percent 30 years of age or younger.



*DMDC Reserve Components Common Personnel Data System (September 2007)*

## AGE (CONT.)

## 4.32. Age of Selected Reserve Officers and Enlisted by Reserve Component

Across all Reserve components, over half (50.4%) of Selected Reserve officers are 41 years of age or older, whereas only 20.5% of Selected Reserve enlisted personnel are 41 years of age or older.

Age	Army National Guard		Army Reserve		Navy Reserve		Marine Corps Reserve	
	Officers	Enlisted	Officers	Enlisted	Officers	Enlisted	Officers	Enlisted
25 or Younger	2,966	138,872	1,024	64,599	46	11,937	14	25,598
26 to 30	5,273	51,276	2,496	26,666	647	8,738	189	5,420
31 to 35	5,718	34,212	4,202	15,797	2,045	9,011	570	2,025
36 to 40	8,821	36,745	7,731	17,733	4,112	11,897	1,019	1,300
41 or Older	14,717	54,107	20,537	29,097	8,877	12,623	1,534	888
<b>Total</b>	<b>37,495</b>	<b>315,212</b>	<b>35,990</b>	<b>153,892</b>	<b>15,727</b>	<b>54,206</b>	<b>3,326</b>	<b>35,231</b>

Age	Air National Guard		Air Force Reserve		Total DoD		Coast Guard Reserve		Total Sel Res	
	Officers	Enlisted	Officers	Enlisted	Officers	Enlisted	Officers	Enlisted	Officers	Enlisted
25 or Younger	197	22,578	130	11,129	4,377	274,713	15	1,560	4,392	276,273
26 to 30	1,248	15,027	1,176	9,006	11,029	116,133	146	1,320	11,175	117,453
31 to 35	2,220	11,994	2,220	6,794	16,975	79,833	244	929	17,219	80,762
36 to 40	3,386	14,306	3,429	8,921	28,498	90,902	362	912	28,860	91,814
41 or Older	6,974	28,324	9,391	18,950	62,030	143,989	549	1,740	62,579	145,729
<b>Total</b>	<b>14,025</b>	<b>92,229</b>	<b>16,346</b>	<b>54,800</b>	<b>122,909</b>	<b>705,570</b>	<b>1,316</b>	<b>6,461</b>	<b>124,225</b>	<b>712,031</b>

*DMDC Reserve Components Common Personnel Data System (September 2007)*

## 4.33. Average Age of Selected Reserve Officers and Enlisted by Reserve Component

The average age of enlisted members is 31.2, while the average age of officers is 40.6. The average age for officers across the Reserve components is relatively similar, while the average age for enlisted members varies from 24.4 for the Marine Corps Reserve to 35.7 for the Air Force Reserve.

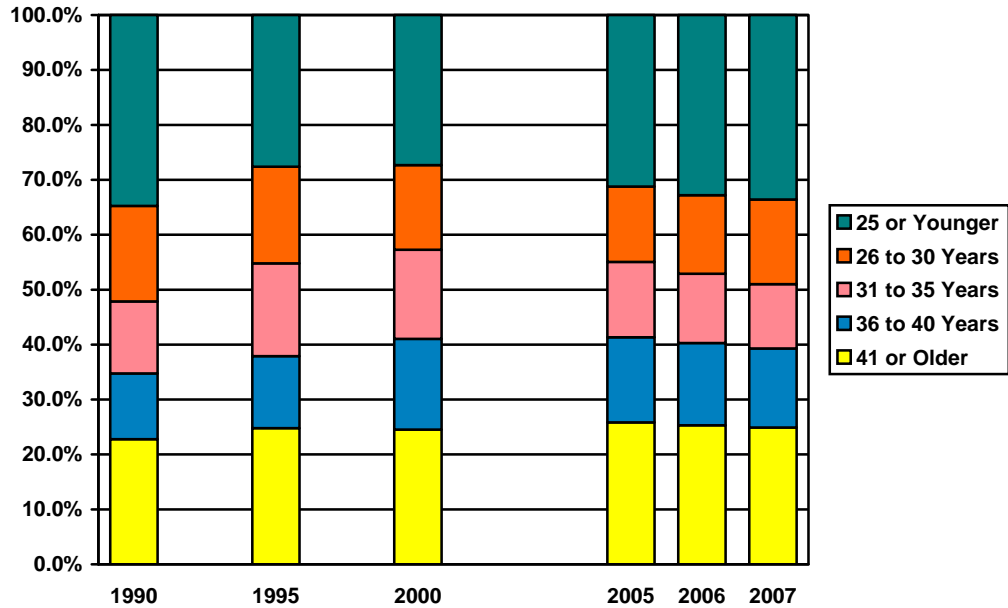
Reserve Component	Officers	Enlisted
Army National Guard	38.2	30.0
Army Reserve	41.8	30.5
Navy Reserve	42.1	33.7
Marine Corps Reserve	39.9	24.4
Air National Guard	40.6	34.6
Air Force Reserve	41.8	35.7
<b>Total DoD</b>	<b>40.6</b>	<b>31.1</b>
Coast Guard Reserve	40.0	34.2
<b>Total Sel Res</b>	<b>40.6</b>	<b>31.2</b>

*DMDC Reserve Components Common Personnel Data System (September 2007)*

**AGE (CONT.)**

**4.34. Selected Reserve Age Trends: 1990-2007**

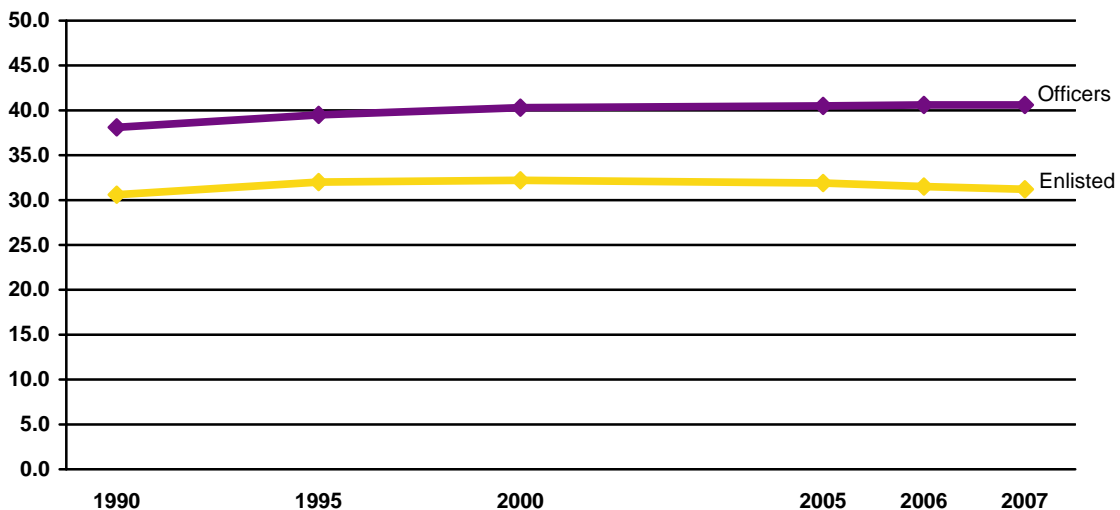
Over the past 17 years, the percent of Selected Reserve under the age of 26 has decreased from 34.8 percent in 1990 to 33.6 percent in 2007. During the same time period, the percent of Selected Reserve members who are 41 years of age or older has increased from 22.8 percent to 24.9 percent.



DMDC Reserve Components Common Personnel Data System (1990, 1995, 2000, 2005, 2006, 2007)

**4.35. Average Age of Selected Reserve Officers and Enlisted Trends: 1990-2007**

The average age of officers and enlisted in 2007 is slightly higher than it was in 1990 and has remained relatively stable for the last seven years.



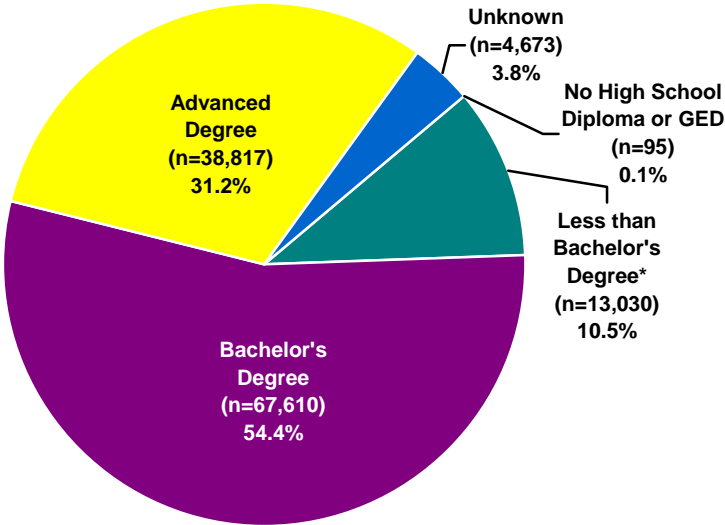
Note: Data are represented ONLY for the years indicated. Data for the years in between are NOT represented in this graph.

DMDC Reserve Components Common Personnel Data System (1990, 1995, 2000, 2005, 2006, 2007)

**EDUCATION**

**4.36. Education Level of Selected Reserve Officers  
(N=124,225)**

The majority of Selected Reserve officers (85.6%) hold a Bachelor's degree or higher, while in the U.S. population, only 27.5 percent of those age 25 and over had a Bachelor's degree or higher in 2007.

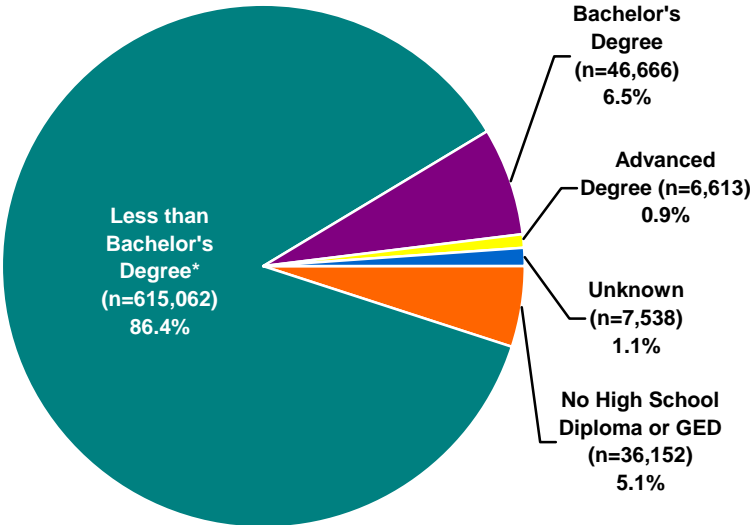


\* Includes cases with at least a high school diploma and possibly additional education less than a Bachelor's degree (e.g., Associate's degree).

*DMDC Reserve Components Common Personnel Data System (September 2007); United States Census (2007)*

**4.37. Education Level of Selected Reserve Enlisted  
(N=712,031)**

The percent of Selected Reserve enlisted who have at least a high school diploma (93.8%) is slightly higher than the overall U.S. population of those age 25 and over (84.5%) in 2007.



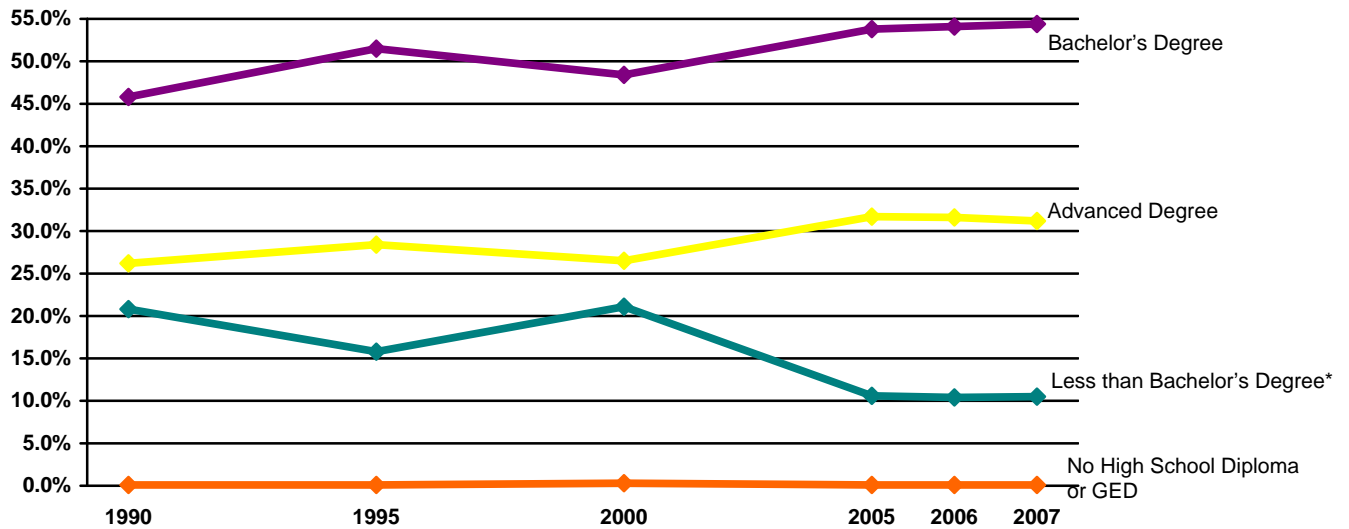
\* Includes cases with at least a high school diploma and possibly additional education less than a Bachelor's degree (e.g., Associate's degree).

*DMDC Reserve Components Common Personnel Data System (September 2007); United States Census (2007)*

**EDUCATION (CONT.)**

**4.38. Education Level of Selected Reserve Officer Trends: 1990-2007**

The proportion of Selected Reserve officers with a Bachelor's degree or higher has increased from 72.0 percent in 1990 to 85.7 percent in 2007.



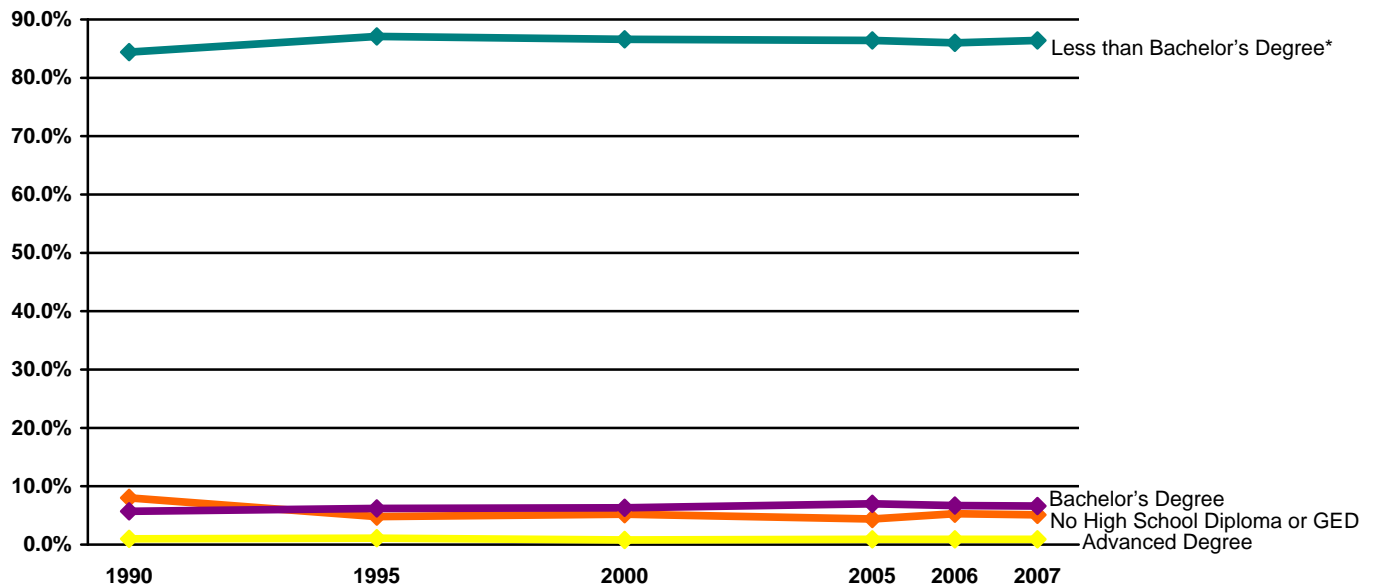
\* Includes cases with at least a high school diploma and possibly additional education less than a Bachelor's degree (e.g., Associate's degree).

Note: Data are represented ONLY for the years indicated. Data for the years in between are NOT represented in this graph.

*DMDC Reserve Components Common Personnel Data System (1990, 1995, 2000, 2005, 2006, 2007)*

**4.39. Education Level of Selected Reserve Enlisted Trends: 1990-2007**

The education level of Selected Reserve enlisted personnel has remained relatively stable since 1990.



\* Includes cases with at least a high school diploma and possibly additional education less than a Bachelor's degree (e.g., Associate's degree).

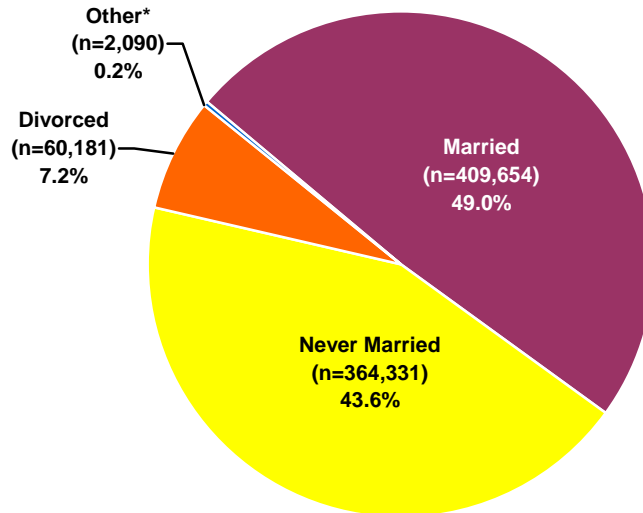
Note: Data are represented ONLY for the years indicated. Data for the years in between are NOT represented in this graph.

*DMDC Reserve Components Common Personnel Data System (1990, 1995, 2000, 2005, 2006, 2007)*

## MARITAL STATUS

### 4.40. Marital Status of the Selected Reserve (N=836,256)

The marital status of Selected Reserve members is slightly lower than that of the U.S. population. According to United States Census numbers, 50.2 percent of the U.S. population who are 15 years old or over were married in 2007. In comparison, 49.0 percent of Selected Reserve members are reported as married. For both groups, "married" includes those who are married or remarried.



\* Includes annulled, widowed, and unknown cases.

*DMDC Reserve Components Common Personnel Data System (September 2007); United States Census (2007)*

### 4.41. Percent of Married Selected Reserve by Pay Grade and Reserve Component (N=409,654)

This table displays the Selected Reserve members who are married as a percent of the total number of Selected Reserve in that paygrade and Reserve component. Across all Reserve components, senior officers are more likely to be married than all other rank groups. The Air Force Reserve has the highest percent of married Selected Reserve members, and the Marine Corps Reserve has the lowest.

Reserve Component	O1-O3	O4-O6	O7-O10	W1-W5	E1-E4	E5-E6	E7-E9	Total
Army National Guard	59.1%	84.1%	96.3%	78.9%	24.4%	58.7%	81.6%	44.9%
Army Reserve	58.5%	78.1%	90.4%	74.1%	21.9%	52.1%	74.5%	46.7%
Navy Reserve	62.3%	77.3%	92.0%	75.2%	34.6%	65.1%	79.3%	59.9%
Marine Corps Reserve	61.2%	85.0%	100.0%	79.4%	15.8%	53.2%	79.8%	30.8%
Air National Guard*	66.7%	83.9%	92.0%	N/A*	22.6%	58.6%	79.8%	57.7%
Air Force Reserve*	63.8%	81.5%	89.6%	N/A*	29.5%	59.9%	74.9%	60.6%
<b>Total DoD</b>	<b>60.5%</b>	<b>80.7%</b>	<b>92.9%</b>	<b>77.5%</b>	<b>23.8%</b>	<b>58.0%</b>	<b>78.3%</b>	<b>48.9%</b>
Coast Guard Reserve	69.5%	82.4%	100.0%	84.7%	16.1%	65.2%	81.4%	56.6%
<b>Total Sel Res</b>	<b>60.6%</b>	<b>80.7%</b>	<b>92.9%</b>	<b>77.6%</b>	<b>23.8%</b>	<b>58.1%</b>	<b>78.4%</b>	<b>49.0%</b>

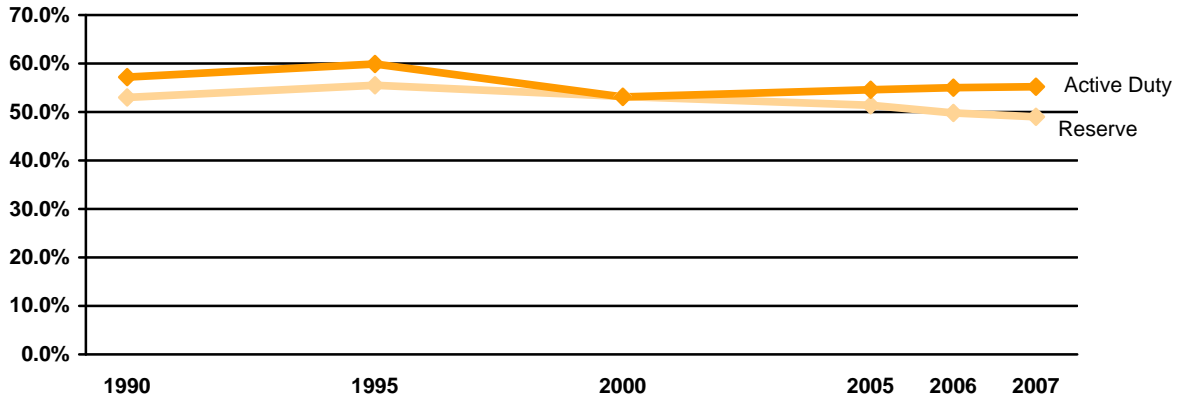
\* The Air National Guard and Air Force Reserve do not have Warrant Officers.

*DMDC Reserve Components Common Personnel Data System (September 2007)*

**MARITAL STATUS (CONT.)**

**4.42. Marriage Trends of the Selected Reserve: 1990-2007**

The percent of married Active Duty members has slightly increased over the past seven years, while the marriage trends of the Selected Reserve has decreased over the last seven years.

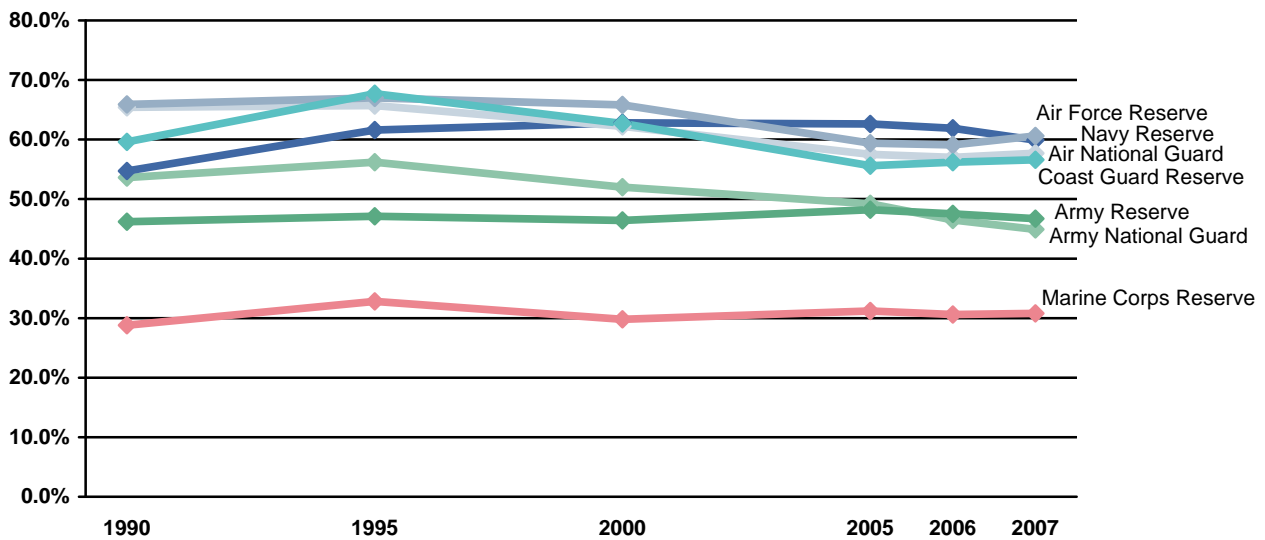


Note: Data are represented ONLY for the years indicated. Data for the years in between are NOT represented in this graph.

*DMDC Reserve Components Common Personnel Data System (1990, 1995, 2000, 2005, 2006, 2007)*

**4.43. Marriage Trends by Reserve Component: 1990-2007**

The percent of Selected Reserve members who are married increased in the Army Reserve, Navy Reserve, and Marine Corps Reserve, while it decreased in the Army National Guard, Air National Guard, Air Force Reserve, and Coast Guard Reserve.



Note: Data are represented ONLY for the years indicated. Data for the years in between are NOT represented in this graph.

*DMDC Reserve Components Common Personnel Data System (1990, 1995, 2000, 2005, 2006, 2007)*

## MARITAL STATUS (CONT.)

### 4.44. Percent of Married Selected Reserve by Reserve Component Trends: 1990-2007

The total percentage of Selected Reserve members who are married declined from 53.0 percent in 1990 to 49.0 percent in 2007.

Reserve Component	1990	1995	2000	2005	2006	2007
Army National Guard	53.6%	56.2%	52.0%	49.2%	46.5%	44.9%
Army Reserve	46.2%	47.1%	46.4%	48.2%	47.5%	46.7%
Navy Reserve	54.7%	61.6%	62.8%	62.6%	61.9%	59.9%
Marine Corps Reserve	28.8%	32.8%	29.8%	31.2%	30.6%	30.8%
Air National Guard	65.4%	65.7%	62.2%	57.5%	57.0%	57.7%
Air Force Reserve	65.9%	67.0%	65.8%	59.4%	59.1%	60.6%
<b>Total DoD</b>	<b>52.9%</b>	<b>55.4%</b>	<b>53.1%</b>	<b>51.4%</b>	<b>49.8%</b>	<b>48.9%</b>
Coast Guard Reserve	59.6%	67.7%	62.7%	55.6%	56.2%	56.6%
<b>Total Sel Res</b>	<b>53.0%</b>	<b>55.5%</b>	<b>53.2%</b>	<b>51.4%</b>	<b>49.8%</b>	<b>49.0%</b>

*DMDC Reserve Components Common Personnel Data System (1990, 1995, 2000, 2005, 2006, 2007)*

### 4.45. Average Age of Married Selected Reserve Officers by Reserve Component Trends: 2000-2007

The mean age of married Selected Reserve officers has increased slightly since 2000.

Reserve Component	2000	2005	2006	2007
Army National Guard	38.9	40.3	40.4	40.5
Army Reserve	41.2	42.7	42.9	42.9
Navy Reserve	40.7	41.6	41.9	42.5
Marine Corps Reserve	39.1	40.4	40.6	40.5
Air National Guard	39.8	41.4	41.5	41.4
Air Force Reserve	41.1	42.3	42.5	42.3
<b>Total DoD</b>	<b>40.3</b>	<b>41.6</b>	<b>41.7</b>	<b>41.8</b>
Coast Guard Reserve	40.3	41.5	41.2	41.0
<b>Total Sel Res</b>	<b>40.3</b>	<b>41.6</b>	<b>41.7</b>	<b>41.8</b>

*DMDC Reserve Components Common Personnel Data System (2000, 2005, 2006, 2007)*

### 4.46. Average Age of Married Selected Reserve Enlisted by Reserve Component Trends: 2000-2007

The mean age of married enlisted personnel has remained relatively stable since 2000.

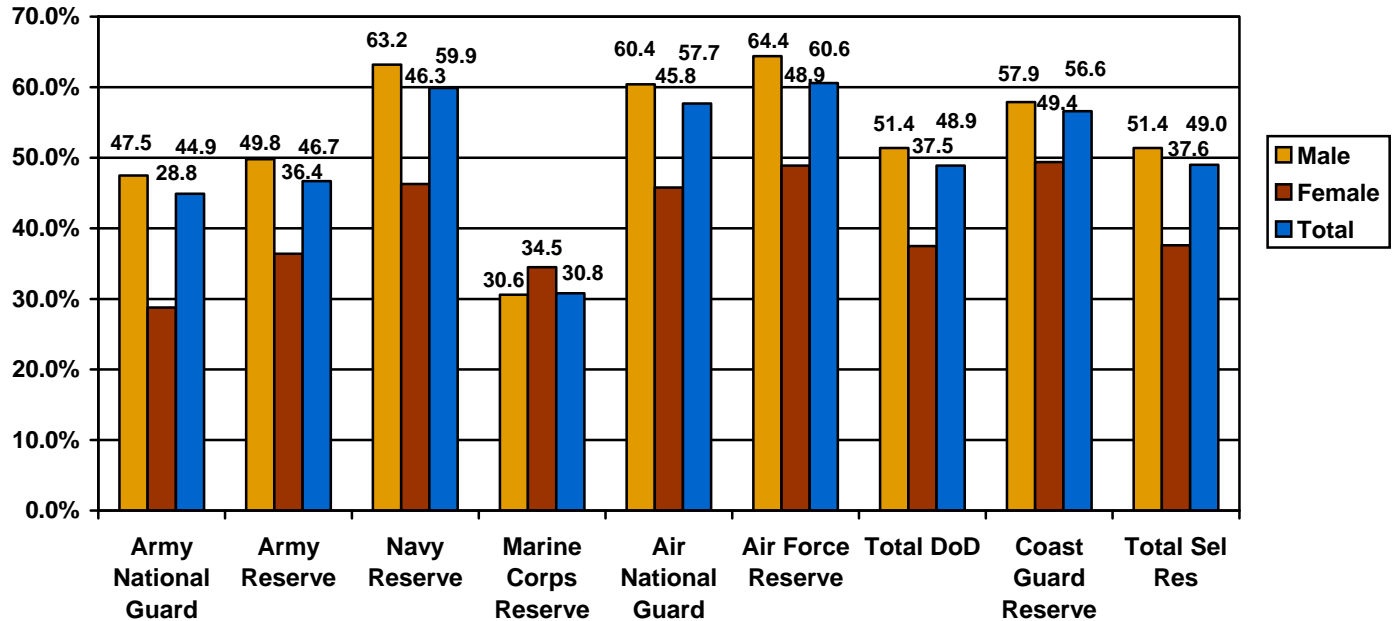
Reserve Component	2000	2005	2006	2007
Army National Guard	37.0	36.5	36.3	36.1
Army Reserve	36.9	36.5	36.3	36.1
Navy Reserve	36.4	36.7	36.6	36.3
Marine Corps Reserve	30.2	29.1	29.1	29.0
Air National Guard	39.2	39.3	39.2	38.9
Air Force Reserve	39.1	39.4	39.4	38.9
<b>Total DoD</b>	<b>37.3</b>	<b>37.0</b>	<b>36.9</b>	<b>36.6</b>
Coast Guard Reserve	40.0	39.0	38.9	38.6
<b>Total Sel Res</b>	<b>37.3</b>	<b>37.0</b>	<b>36.9</b>	<b>36.7</b>

*DMDC Reserve Components Common Personnel Data System (2000, 2005, 2006, 2007)*

**MARITAL STATUS (CONT.)**

**4.47. Percent of Married Selected Reserve by Gender and Reserve Component**

This chart presents the Selected Reserve members who are married as a percent of the total number of Selected Reserve members of that gender and Reserve component. Of the 689,315 males and 146,914 females in the Selected Reserve, 51.4 percent and 37.6 percent, respectively, are married.



DMDC Reserve Components Common Personnel Data System (September 2007)

**4.48. Gender of Married Selected Reserve by Reserve Component**

Of the 409,654 Selected Reserve members who are married, 55,234 are female and 354,406 are male.

Reserve Component	Female	Male	Total
Army National Guard	14,049	144,362	158,425*
Army Reserve	16,171	72,459	88,630
Navy Reserve	6,416	35,455	41,871
Marine Corps Reserve	667	11,202	11,869
Air National Guard	8,800	52,547	61,347
Air Force Reserve	8,565	34,543	43,108
<b>Total DoD</b>	<b>54,668</b>	<b>350,568</b>	<b>405,250</b>
Coast Guard Reserve	566	3,838	4,404
<b>Total Sel Res</b>	<b>55,234</b>	<b>354,406</b>	<b>409,654</b>

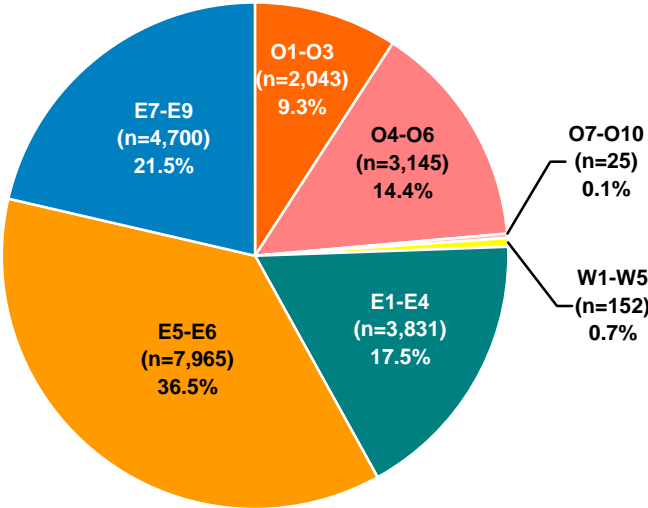
\* Includes 14 cases from the Army National Guard where gender was not reported.

DMDC Reserve Components Common Personnel Data System (September 2007)

**MARITAL STATUS (CONT.)**

**4.49. Number of Selected Reserve Members in Dual-military Marriages by Pay Grade (N=21,861)**

Dual-military marriages refer to a Selected Reserve member who is married to another Selected Reserve member or to an Active Duty member. About three-quarters of Selected Reserve dual-military marriages involve enlisted members (75.5%). The total number of Selected Reserve members in dual-military marriages is 21,861, which is 2.6 percent of all Selected Reserve personnel and 5.3 percent of all married Selected Reserve personnel.



DMDC Reserve Components Common Personnel Data System (September 2007)

## MARITAL STATUS (CONT.)

### 4.50. Percent of Selected Reserve in Dual-military Marriages by Gender and Reserve Component (N=836,256)

Out of the 836,256 Selected Reserve members, 2.6 percent are in dual-military marriages. In all Reserve components, a higher percentage of female military members are in dual-military marriage than males. In particular, almost one-fifth of all Air Force Reserve females (19.6%) and Coast Guard Reserve females (19.0%) are in a dual-military marriage.

Gender of Sel Res Member	Army National Guard	Army Reserve	Navy Reserve	Marine Corps Reserve	Air National Guard	Air Force Reserve	Total DoD	Coast Guard Reserve	Total Sel Res
Male	N/A*	1.9%	0.9%	0.9%	3.7%	4.2%	1.3%	1.4%	1.3%
Female	N/A*	9.6%	8.1%	18.1%	17.5%	19.6%	8.6%	19.0%	8.7%
<b>Total</b>	<b>N/A*</b>	<b>3.7%</b>	<b>2.3%</b>	<b>1.8%</b>	<b>6.2%</b>	<b>8.0%</b>	<b>2.6%</b>	<b>4.0%</b>	<b>2.6%</b>

\* The Army National Guard does not report dual-military marriages.

*DMDC Reserve Components Common Personnel Data System (September 2007)*

### 4.51. Percent of Married Selected Reserve in Dual-military Marriages by Gender and Reserve Component (N=409,654)

Out of the 409,654 Selected Reserve members who are married, 5.3 percent are in dual-military marriages. Over half (52.5%) of Marine Corps women who are married are in dual-military marriages.

Gender of Sel Res Member	Army National Guard	Army Reserve	Navy Reserve	Marine Corps Reserve	Air National Guard	Air Force Reserve	Total DoD	Coast Guard Reserve	Total Sel Res
Male	N/A*	3.8%	1.4%	3.0%	6.0%	6.6%	2.6%	2.4%	2.6%
Female	N/A*	26.4%	17.5%	52.5%	38.3%	40.2%	23.0%	38.5%	23.1%
<b>Total</b>	<b>N/A*</b>	<b>7.9%</b>	<b>3.8%</b>	<b>5.8%</b>	<b>10.7%</b>	<b>13.2%</b>	<b>5.3%</b>	<b>7.0%</b>	<b>5.3%</b>

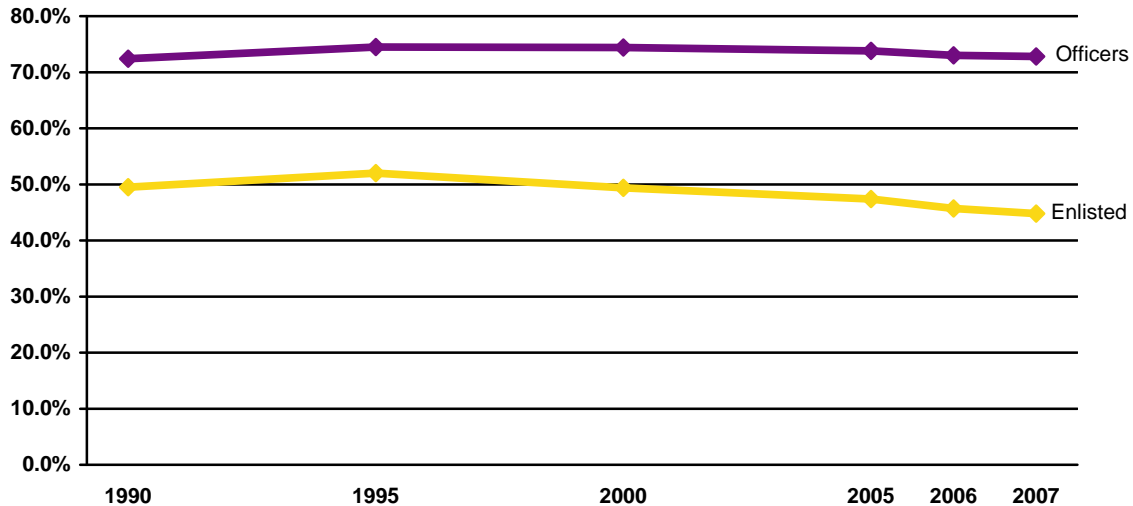
\* The Army National Guard does not report dual-military marriages.

*DMDC Reserve Components Common Personnel Data System (September 2007)*

## MARITAL STATUS (CONT.)

### 4.52. Marriage Trends Among Selected Reserve Officers and Enlisted: 1990-2007

Selected Reserve marriage rates for both officers and enlisted hit a peak in 1995 (74.5% and 52.0%, respectively), and have decreased slightly since then (72.8% and 44.8%, respectively).



Note: Data are represented ONLY for the years indicated. Data for the years in between are NOT represented in this graph.

*DMDC Reserve Components Common Personnel Data System (1990, 1995, 2000, 2005, 2006, 2007)*

### 4.53. Percent of Married Officers and Enlisted of the Selected Reserve Trends: 1990-2007

The percent of married Selected Reserve officers has increased slightly from 72.4 percent in 1990 to 72.8 percent in 2007, while the percent of married Selected Reserve enlisted has decreased from 49.5 percent in 1990 to 44.8 percent in 2007

Year	Officers	Enlisted	Total
1990	72.4%	49.5%	53.0%
1995	74.5%	52.0%	55.5%
2000	74.4%	49.4%	53.2%
2005	73.8%	47.4%	51.4%
2006	73.0%	45.7%	49.8%
2007	72.8%	44.8%	49.0%

*DMDC Reserve Components Common Personnel Data System (1990, 1995, 2000, 2005, 2006, 2007)*

## MARITAL STATUS (CONT.)

### 4.54. Estimated Divorces by Reserve Component and Pay Grade

The DoD collects information on marital status year to year. The number of divorces are estimated by comparing the number of people who indicated that they were married in 2006, but no longer indicate a status of married in 2007. Additionally, the number of divorces displayed are a count of divorces that occurred in 2007, not a count of all military members who are divorced. The percents are calculated by taking the count and dividing it by the number of people that were married in 2006.

	Officer			Enlisted			Total		
	Married as of Sept 2006	Divorced in 2007		Married as of Sept 2006	Divorced in 2007		Married as of Sept 2006	Divorced in 2007	
	n	n	%	n	n	%	n	n	%
Army National Guard	26,387	401	1.5%	134,534	2,846	2.1%	160,921	3,247	2.0%
Army Reserve	25,612	438	1.7%	64,303	2,217	3.4%	89,915	2,655	3.0%
Navy Reserve	11,980	992	8.3%	31,576	1,076	3.4%	43,556	2,068	4.7%
Marine Corps Reserve	2,637	53	2.0%	9,422	319	3.4%	12,059	372	3.1%
Air National Guard	10,526	205	1.9%	49,514	1,497	3.0%	60,040	1,702	2.8%
Air Force Reserve	12,577	281	2.2%	31,086	1,268	4.1%	43,663	1,549	3.5%
<b>Total DoD</b>	<b>89,719</b>	<b>2,370</b>	<b>2.6%</b>	<b>320,435</b>	<b>9,223</b>	<b>2.9%</b>	<b>410,154</b>	<b>11,593</b>	<b>2.8%</b>

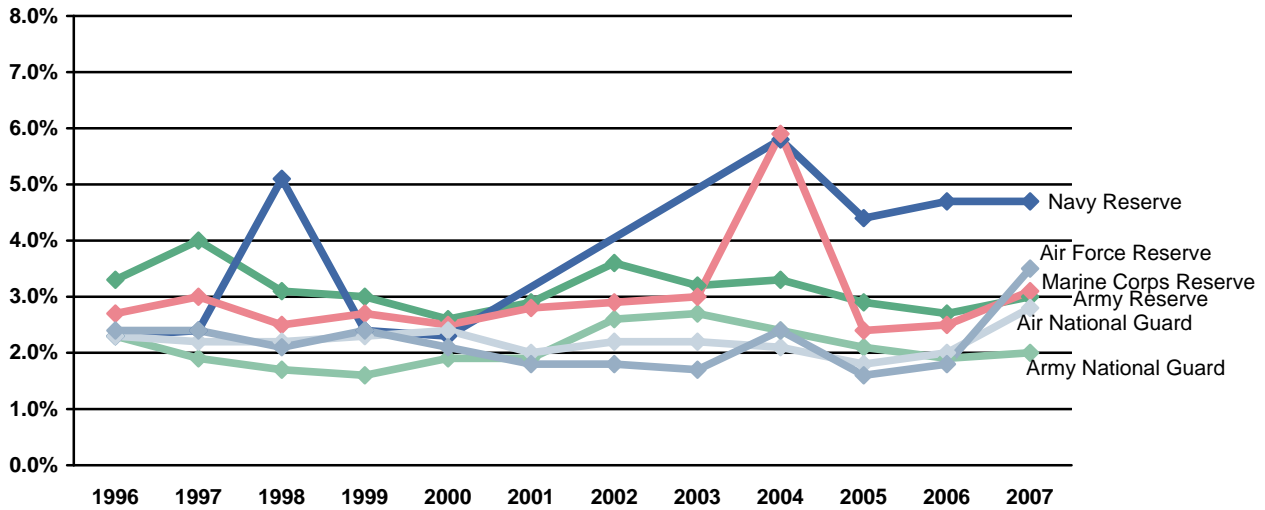
Note: These figures include widowed cases. However, the number of people who were widowed last year is expected to be small and should not affect the percents.

*DMDC Reserve Components Common Personnel Data System (2006, 2007)*

**MARITAL STATUS (CONT.)**

**4.55. Estimated Percent of Divorces by Reserve Component Trends: 1996-2007**

This graph presents the estimated percent of married Selected Reserve who divorced during Fiscal Years 1996-2007.



\* Reliable data for the Navy Reserve divorce rates are not available for 2001, 2002, and 2003.  
 Note: These figures include widowed cases. However, the number of people who were widowed last year is expected to be small and should not affect the percents.

*DMDC Reserve Components Common Personnel Data System (1996, 1997, 1998, 1999, 2000, 2001, 2002, 2003, 2004, 2005, 2006, 2007)*

**4.56. Estimated Percent of Divorces Among Selected Reserve Officers and Enlisted by Reserve Component Trends: 2000-2007**

Since 2000, the estimated divorce rate has increased slightly for enlisted in all Reserve components. Divorce trends are more varied for officers, ranging from a slight decrease in the divorce rate for Army National Guard officers to a sharp increase for Air Force Reserve officers.

Reserve Component	2000		2005		2006		2007	
	Officers	Enlisted	Officers	Enlisted	Officers	Enlisted	Officers	Enlisted
Army National Guard	1.7%	1.9%	1.7%	2.1%	1.6%	2.0%	1.5%	2.1%
Army Reserve	1.7%	3.1%	1.8%	3.3%	1.6%	3.1%	1.7%	3.4%
Navy Reserve	1.3%	2.6%	6.4%	3.7%	7.8%	3.5%	8.3%	3.4%
Marine Corps Reserve	1.6%	2.9%	1.4%	2.6%	1.5%	2.8%	2.0%	3.4%
Air National Guard	1.5%	2.6%	1.3%	2.0%	1.4%	2.1%	1.9%	3.0%
Air Force Reserve	1.4%	2.4%	1.0%	1.9%	1.1%	2.0%	2.2%	4.1%
<b>Total DoD</b>	<b>1.6%</b>	<b>2.4%</b>	<b>2.3%</b>	<b>2.5%</b>	<b>2.4%</b>	<b>2.4%</b>	<b>2.6%</b>	<b>2.9%</b>

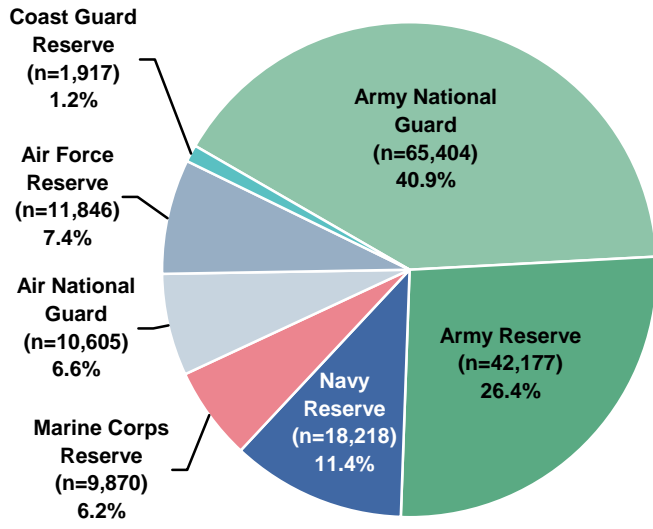
Note: These figures include widowed cases. However, the number of people who were widowed last year is expected to be small and should not affect the percents.

*DMDC Reserve Components Common Personnel Data System (2000, 2005, 2006, 2007)*

**RESERVE LOSSES**

**4.57. Selected Reserve Losses by Reserve Component (N=160,037)**

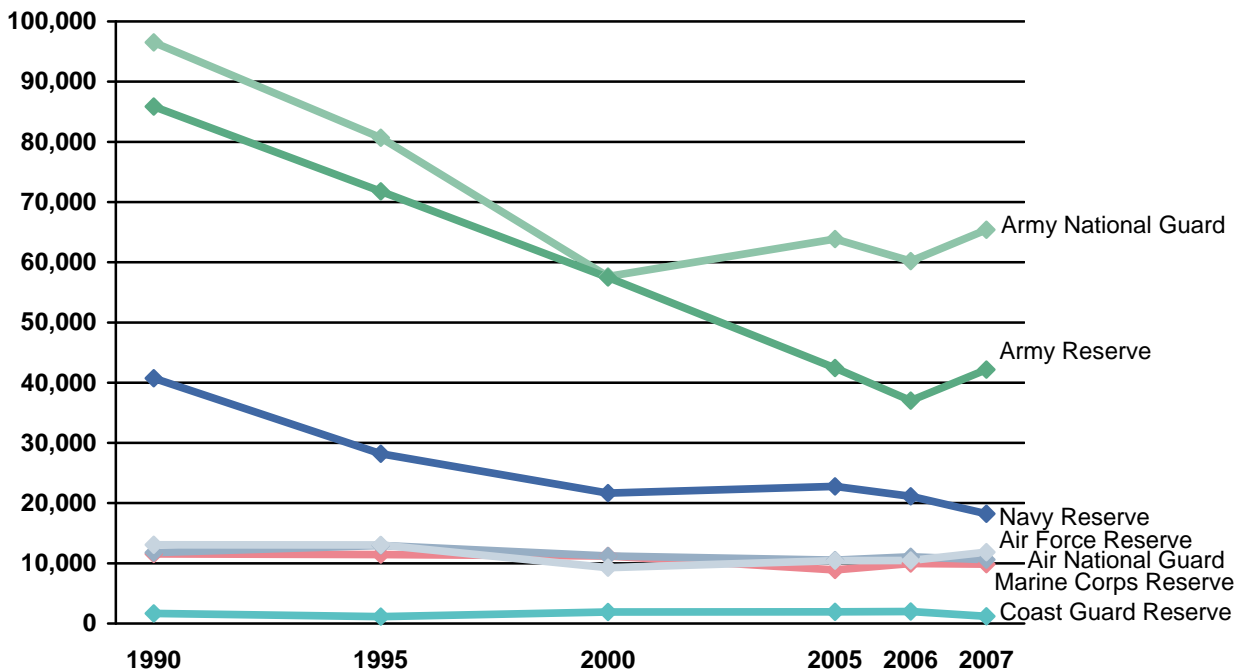
Losses include those members who left the force and those members who realigned within the force. During 2007, 40.9 percent of the total Reserve separations and realignments came from the Army National Guard. These losses are relatively proportional to the size of the component as the Army National Guard comprises over 40 percent of the Selected Reserve.



Official Guard and Reserve Manpower Strengths and Statistics FY 2007 Summary

**4.58. Selected Reserve Losses by Reserve Component Trends: 1990-2007**

The total number of Selected Reserve separations decreased between 1990 and 2007 for all Reserve components.



Note: Data are represented ONLY for the years indicated. Data for the years in between are NOT represented in this graph.

Official Guard and Reserve Manpower Strengths and Statistics FY 1990, 1995, 2000, 2005, 2006, & 2007 Summary

## RESERVE LOSSES (CONT.)

### 4.59. Selected Reserve Losses Among Officers and Enlisted by Reserve Component

Across all Reserve components, the highest number of personnel losses came from Army National Guard enlistees in 2007.

Reserve Component	Officers	Enlisted	Total
Army National Guard	3,741	61,663	65,404
Army Reserve	4,887	37,290	42,177
Navy Reserve	2,179	16,039	18,218
Marine Corps Reserve	857	9,013	9,870
Air National Guard	995	9,610	10,605
Air Force Reserve	1,943	9,903	11,846
<b>Total DoD</b>	<b>14,602</b>	<b>143,518</b>	<b>158,120</b>
Coast Guard Reserve	234	1,683	1,917
<b>Total Sel Res</b>	<b>14,836</b>	<b>145,201</b>	<b>160,037</b>

*Official Guard and Reserve Manpower Strengths and Statistics FY 2007 Summary*

### 4.60. Selected Reserve Officer and Enlisted Losses by Type of Loss and Reserve Component

Of the 160,037 Selected Reserve losses in 2007, 14,836 were officers and 145,201 were enlisted. Transfer to the Retired Reserves was the most common type of loss for officers, while separation to civilian life was the most common type of loss for enlisted members.

Type of Loss	Army National Guard (N=65,404)		Army Reserve (N=42,177)		Navy Reserve (N=18,218)		Marine Corps Reserve (N=9,870)	
	Officers	Enlisted	Officers	Enlisted	Officers	Enlisted	Officers	Enlisted
Civilian Life	506	25,858	201	8,130	192	5,787	20	2,778
Death	26	353	25	129	7	32	1	59
Extended Active Duty	63	3,312	476	6,438	52	347	107	354
To Other Component	146	1,089	316	1,957	0	0	0	2
To IRR/ING	810	15,895	898	5,693	1,183	5,347	496	5,193
To Standby Reserves	24	53	37	135	18	352	0	0
To Retired Reserves	1,328	7,943	2,024	3,790	549	1,938	198	307
To Enlisted From Officer	80	N/A	16	N/A	0	N/A	0	N/A
To Officer from Enlisted	N/A	1,451	N/A	1,120	N/A	7	N/A	103
Other/Unknown	758	5,709	894	9,898	178	2,229	35	217
<b>Total</b>	<b>3,741</b>	<b>61,663</b>	<b>4,887</b>	<b>37,290</b>	<b>2,179</b>	<b>16,039</b>	<b>857</b>	<b>9,013</b>

Type of Loss	Air National Guard (N=10,605)		Air Force Reserve (N=11,846)		Total DoD (N=158,120)		Coast Guard Reserve (N=1,917)		Total Sel Res (N=160,037)	
	Officers	Enlisted	Officers	Enlisted	Officers	Enlisted	Officers	Enlisted	Officers	Enlisted
Civilian Life	13	2,156	103	1,899	1,035	46,608	0	0	1,035	46,608
Death	6	57	9	25	74	655	0	0	74	655
Extended Active Duty	0	1	27	11	725	10,463	0	0	725	10,463
To Other Component	174	2,012	149	1,725	785	6,785	0	0	785	6,785
To IRR/ING	37	599	552	3,020	3,976	35,747	66	926	4,042	36,673
To Standby Reserves	29	171	3	4	111	715	20	66	131	781
To Retired Reserves	510	3,168	975	2,843	5,584	19,989	44	147	5,628	20,136
To Enlisted from Officer	0	N/A	0	N/A	96	N/A	35	N/A	131	N/A
To Officer from Enlisted	N/A	510	N/A	122	N/A	3,313	N/A	0	N/A	3,313
Other/Unknown	226	936	125	254	2,216	19,243	69	544	2,285	19,787
<b>Total</b>	<b>995</b>	<b>9,610</b>	<b>1,943</b>	<b>9,903</b>	<b>14,602</b>	<b>143,518</b>	<b>234</b>	<b>1,683</b>	<b>14,836</b>	<b>145,201</b>

*Official Guard and Reserve Manpower Strengths and Statistics FY 2007 Summary*

## RESERVE LOSSES (CONT.)

### 4.61. Ready Reserve Retirements Among Officers and Enlisted

Across all Reserve Components (excluding Coast Guard Reserve), 648,346 total members are retired from the Ready Reserve (including Selected Reserve and the Individual Ready Reserve/Inactive National Guard (IRR/ING)). Retirees reported here include both non-disabled retirees and disabled retirees.

Type of Retirement	Officers	Enlisted	Total
<b>Non-Disability Retirement Type</b>			
Reserve Component Retirement with 20+ Years Active Service	66,131	25,315	91,446
Receiving Pay (Age 60 or Older) with 20+ Years Reserve Service	143,723	187,948	331,671
Not Receiving Pay (Under Age 60) with 20+ Years Reserve Service	53,353	140,846	194,199
<b>Total Non-Disability Retirements*</b>	<b>263,207</b>	<b>354,109</b>	<b>617,316</b>
<b>Disability Retirement Type</b>			
Reserve Component Retirement on Permanent Disability	11,908	17,922	29,830
Reserve Component Retirement on Temporary Disability	316	884	1,200
<b>Total Disability Retirements*</b>	<b>12,224</b>	<b>18,806</b>	<b>31,030</b>
<b>Total Reserve Retirements*</b>	<b>275,431</b>	<b>372,915</b>	<b>648,346</b>

\* Excludes Coast Guard.

*Official Guard and Reserve Manpower Strengths and Statistics FY 2007 Summary*

### 4.62. Ready Reserve Retirements by Reserve Component

Of the Reserve components, the Army National Guard and Army Reserve have the largest number of retired personnel (330,121), followed by the Air National Guard and Air Force Reserve (182,102), the Navy Reserve (120,859), and the Marine Corps Reserve (15,264).

Type of Retirement	Army National Guard and Army Reserve	Navy Reserve	Marine Corps Reserve	Air National Guard and Air Force Reserve
<b>Non-Disability Retirement Type</b>				
Reserve Component Retirement with 20+ Years Active Service	40,888	19,803	1,534	29,221
Receiving Pay (Age 60 or Older) with 20+ Years Reserve Service	178,527	59,040	6,969	87,135
Not Receiving Pay (Under age 60) with 20+ Years Reserve Service	88,794	38,283	5,554	61,568
<b>Total Non-Disability Retirements*</b>	<b>308,209</b>	<b>117,126</b>	<b>14,057</b>	<b>177,924</b>
<b>Disability Retirement Type</b>				
Reserve Component Retirement on Permanent Disability	21,295	3,434	1,026	4,075
Reserve Component Retirement on Temporary Disability	617	299	181	103
<b>Total Disability Retirements*</b>	<b>21,912</b>	<b>3,733</b>	<b>1,207</b>	<b>4,178</b>
<b>Total Reserve Retirements*</b>	<b>330,121</b>	<b>120,859</b>	<b>15,264</b>	<b>182,102</b>

\* Excludes Coast Guard.

*Official Guard and Reserve Manpower Strengths and Statistics FY 2007 Summary*