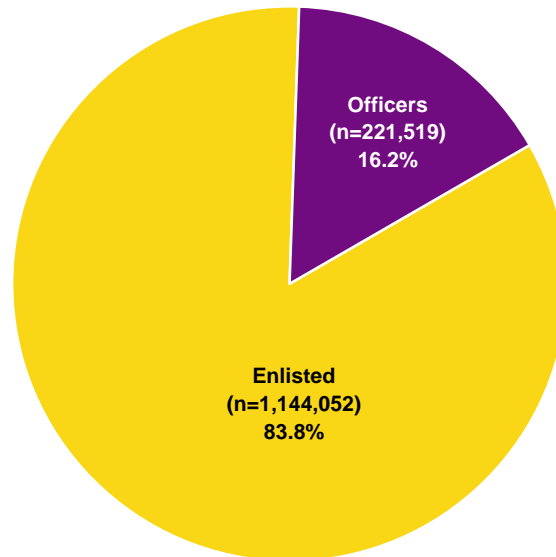


ACTIVE DUTY PERSONNEL

2.01. Officers and Enlisted on Active Duty (N=1,365,571)

There are 1,365,571 Active Duty members. Approximately 16 percent (221,519) of the members are officers and around 84 percent (1,144,052) are enlisted members.



DMDC Active Duty Master File (September 2007)

2.02. Number and Ratio of Active Duty Officers to Enlisted by Service Branch

The Active Duty force has one officer for every 5.2 enlisted personnel. In comparison, the Air Force has one officer for every 4.0 enlisted personnel, the Army has one officer for every 5.1 enlisted personnel, the Navy has one officer for every 5.5 enlisted personnel, and the Marine Corps has one officer for every 8.5 enlisted personnel.

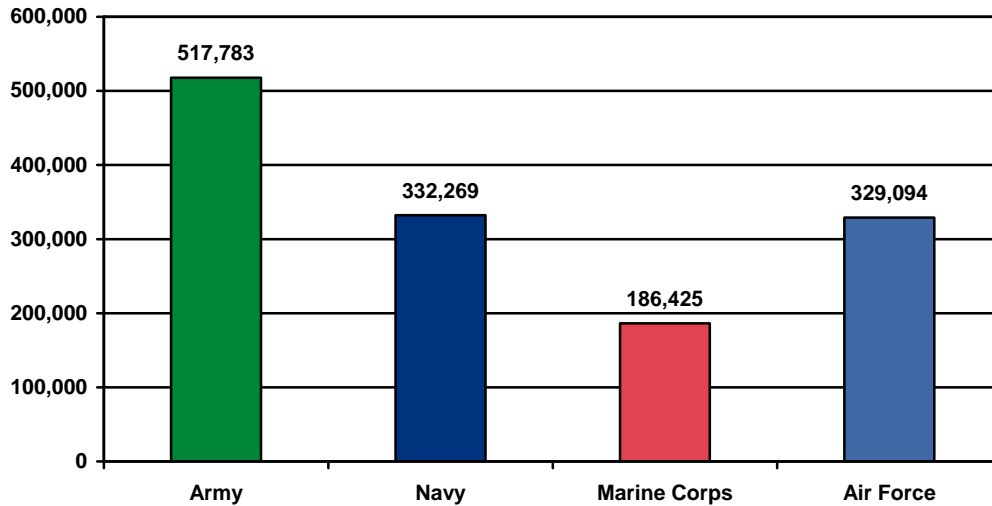
Service Branch	Officers	Enlisted	Total	Ratio of Officers to Enlisted
Army	84,682	433,101	517,783	1 to 5.1
Navy	51,431	280,838	332,269	1 to 5.5
Marine Corps	19,684	166,741	186,425	1 to 8.5
Air Force	65,722	263,372	329,094	1 to 4.0
Total DoD	221,519	1,144,052	1,365,571	1 to 5.2

DMDC Active Duty Master File (September 2007)

ACTIVE DUTY PERSONNEL (CONT.)

2.03. Number of Active Duty Personnel by Service Branch

The Army has the largest number of Active Duty members, with 517,783 members. The Navy and Air Force have a similar number of members (332,269 and 329,094, respectively). The Marine Corps has 186,425 members.



DMDC Active Duty Master File (September 2007)

ACTIVE DUTY PERSONNEL (CONT.)

2.04. Number and Percent of Active Duty Personnel by Pay Grade and Service Branch

The number and percent of personnel in each Service branch is presented by pay grade. The pay grades consist of three categories, Officers ("O"), Warrant Officers ("W"), and Enlisted ("E").

Pay Grade	Army		Navy		Marine Corps		Air Force		Total DoD	
	N	%	N	%	N	%	N	%	N	%
O1	9,716	1.9%	6,276	1.9%	3,008	1.6%	7,009	2.1%	26,009	1.9%
O2	6,833	1.3%	5,884	1.8%	2,942	1.6%	7,656	2.3%	23,315	1.7%
O3	25,327	4.9%	17,277	5.2%	5,607	3.0%	22,583	6.9%	70,794	5.2%
O4	15,394	3.0%	10,237	3.1%	3,631	1.9%	14,838	4.5%	44,100	3.2%
O5	9,174	1.8%	6,765	2.0%	1,851	1.0%	9,940	3.0%	27,730	2.0%
O6	4,079	0.8%	3,159	1.0%	681	0.4%	3,406	1.0%	11,325	0.8%
O7	159	0.0%	111	0.0%	41	0.0%	143	0.0%	454	0.0%
O8	93	0.0%	69	0.0%	24	0.0%	97	0.0%	283	0.0%
O9	53	0.0%	33	0.0%	15	0.0%	32	0.0%	133	0.0%
O10	11	0.0%	11	0.0%	4	0.0%	14	0.0%	40	0.0%
O-Unknown	0	N/A	0	N/A	0	N/A	4	0.0%	4	0.0%
Total O1-O10	70,839	13.7%	49,822	15.0%	17,804	9.6%	65,722	20.0%	204,187	15.0%
W1	3,212	0.6%	0	N/A	232	0.1%	N/A*	N/A*	3,444	0.3%
W2	4,472	0.9%	497	0.1%	756	0.4%	N/A*	N/A*	5,725	0.4%
W3	3,344	0.6%	793	0.2%	539	0.3%	N/A*	N/A*	4,676	0.3%
W4	2,364	0.5%	258	0.1%	270	0.1%	N/A*	N/A*	2,892	0.2%
W5	451	0.1%	61	0.0%	83	0.0%	N/A*	N/A*	595	0.0%
W-Unknown	0	N/A	0	N/A	0	N/A	N/A*	N/A*	0	N/A
Total W1-W5	13,843	2.7%	1,609	0.5%	1,880	1.0%	N/A*	N/A*	17,332	1.3%
Total Officers	84,682	16.4%	51,431	15.5%	19,684	10.6%	65,722	20.0%	221,519	16.2%
E1	21,221	4.1%	14,438	4.3%	15,875	8.5%	10,091	3.1%	61,625	4.5%
E2	34,245	6.6%	18,320	5.5%	21,005	11.3%	6,365	1.9%	79,935	5.9%
E3	63,512	12.3%	43,216	13.0%	38,894	20.9%	46,745	14.2%	192,367	14.1%
E4	118,421	22.9%	52,309	15.7%	36,049	19.3%	53,202	16.2%	259,981	19.0%
E5	81,019	15.6%	69,209	20.8%	27,655	14.8%	69,251	21.0%	247,134	18.1%
E6	60,823	11.7%	49,773	15.0%	14,013	7.5%	43,475	13.2%	168,084	12.3%
E7	38,946	7.5%	23,594	7.1%	8,073	4.3%	26,338	8.0%	96,951	7.1%
E8	11,419	2.2%	7,116	2.1%	3,616	1.9%	5,193	1.6%	27,344	2.0%
E9	3,495	0.7%	2,858	0.9%	1,561	0.8%	2,710	0.8%	10,624	0.8%
E-Unknown	0	N/A	5	0.0%	0	N/A	2	0.0%	7	0.0%
Total Enlisted	433,101	83.6%	280,838	84.5%	166,741	89.4%	263,372	80.0%	1,144,052	83.8%
Total	517,783	100.0%	332,269	100.0%	186,425	100.0%	329,094	100.0%	1,365,571	100.0%

* The Air Force does not have Warrant Officers.

DMDC Active Duty Master File (September 2007)

ACTIVE DUTY PERSONNEL (CONT.)

2.05. Number of Active Duty Officers and Enlisted Trends: 1990-2007

The total number of both officers and enlisted personnel has decreased substantially since 1990, with officers decreasing from 296,886 to 221,519 and enlisted personnel decreasing from 1,732,414 to 1,144,052.

	1990	1995	2000	2005	2006	2007
Officers	296,886	238,119	217,103	226,127	224,134	221,519
Enlisted	1,732,414	1,267,164	1,153,575	1,147,407	1,148,535	1,144,052
Total	2,029,300	1,505,283	1,370,678	1,373,534	1,372,669	1,365,571

DMDC Active Duty Master File (September 1990, 1995, 2000, 2005, 2006, 2007)

2.06. Ratio of Active Duty Officers to Enlisted by Service Branch Trends: 2000-2007

The ratio of officers to enlisted has remained relatively the same since 2000.

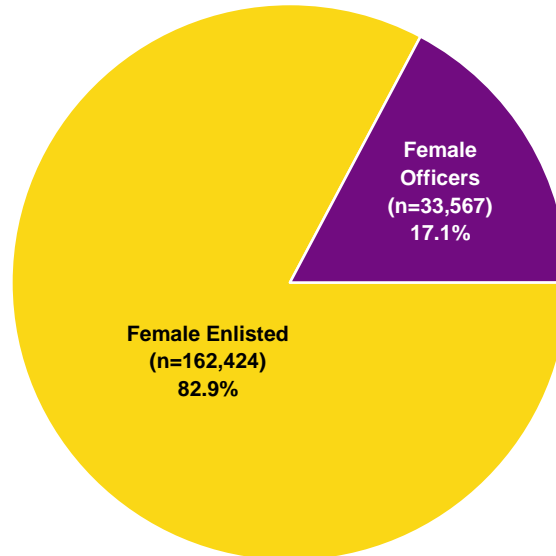
Service Branch	Ratio of Officers to Enlisted			
	2000	2005	2006	2007
Army	1 to 5.2	1 to 5.0	1 to 5.1	1 to 5.1
Navy	1 to 5.9	1 to 5.8	1 to 5.6	1 to 5.5
Marine Corps	1 to 8.7	1 to 8.6	1 to 8.5	1 to 8.5
Air Force	1 to 4.1	1 to 3.8	1 to 3.9	1 to 4.0
Total DoD	1 to 5.3	1 to 5.1	1 to 5.1	1 to 5.2

DMDC Active Duty Master File (September 2000, 2005, 2006, 2007)

WOMEN

2.07. Female Officers and Female Enlisted on Active Duty (N=195,991)

The Active Duty force has 195,991 female members. Among the female Active Duty members, 17.1 percent are officers and 82.9 percent are enlisted members.



DMDC Active Duty Master File (September 2007)

2.08. Number and Ratio of Active Duty Female Officers and Female Enlisted by Service Branch

Overall, there is one female officer for every 4.8 enlisted female personnel. This ratio varies across the Services with the Air Force retaining one female officer for every 4.4 female enlisted personnel, the Army retaining one female officer for every 4.6 female enlisted personnel, the Navy retaining one female officer for every 5.4 female enlisted personnel, and the Marine Corps retaining one female officer for every 9.3 female enlisted personnel.

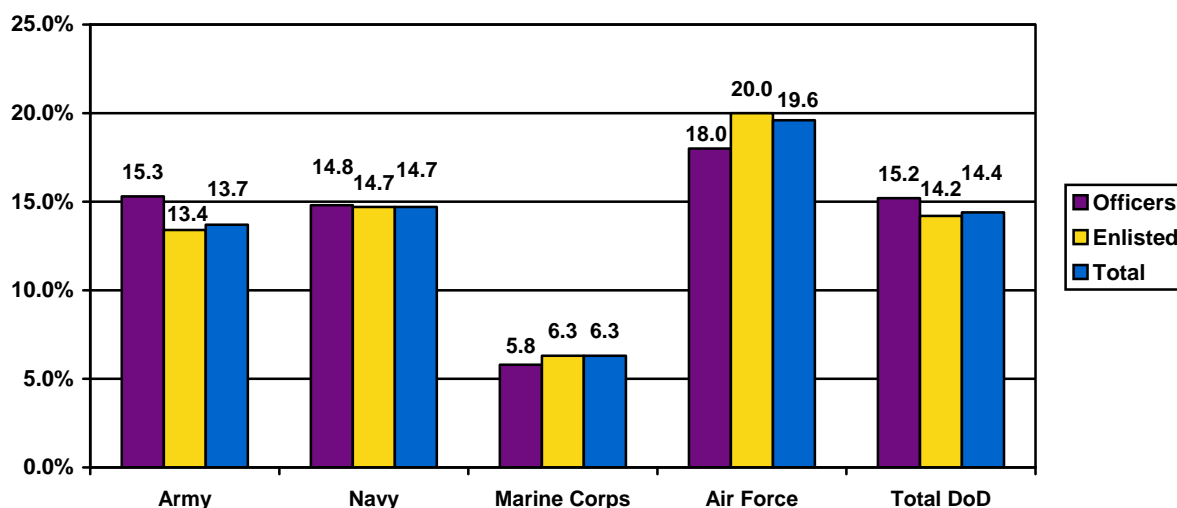
Service Branch	Officers	Enlisted	Total	Ratio of Officers to Enlisted
Army	12,983	58,117	71,100	1 to 4.6
Navy	7,611	41,144	48,755	1 to 5.4
Marine Corps	1,138	10,568	11,706	1 to 9.3
Air Force	11,835	52,595	64,430	1 to 4.4
Total DoD	33,567	162,424	195,991	1 to 4.8

DMDC Active Duty Master File (September 2007)

WOMEN (CONT.)

2.09. Percent of Female Officers and Female Enlisted on Active Duty by Service Branch

Women in uniform make up 14.4 percent of the Active Duty force. In comparison, 56.6 percent of the U.S. civilian work force 16 years old and over was female in 2007. Women constitute 19.6 percent of all Air Force Service members, 14.7 percent of all Navy Service members, 13.7 percent of all Army Service members, and 6.3 percent of all Marine Service members.



DMDC Active Duty Master File (September 2007); Bureau of Labor Statistics (2007)

2.10. Number of Women on Active Duty by Pay Grade and Service Branch

The Army has the highest number of women in uniform at 71,100 followed closely by the Air Force at 64,430. The Navy has 48,755 female members, while the Marine Corps has the lowest number of women at 11,706.

Pay Grade	Army	Navy	Marine Corps	Air Force	Total DoD
O1-O3	8,077	4,920	860	7,724	21,581
O4-O6	3,733	2,592	166	4,090	10,581
O7-O10	14	13	3	21	51
W1-W5	1,159	86	109	N/A*	1,354
E1-E4	33,965	22,474	7,290	24,980	88,709
E5-E6	18,191	16,295	2,580	23,242	60,308
E7-E9	5,961	2,375	698	4,373	13,407
Total	71,100	48,755	11,706	64,430	195,991

* The Air Force does not have Warrant Officers.

DMDC Active Duty Master File (September 2007)

WOMEN (CONT.)

2.11. Number of Active Duty Female Officers and Female Enlisted Trends: 1990-2007

Trends in the number of Active Duty females from 1990 to 2007 vary across the Services. The number of female officers and enlisted personnel has decreased in the Navy and Air Force, while the number of female officers and enlisted personnel has increased in the Marine Corps. The Army has seen a slight increase in the total number of female officers but a decline in the number of enlisted females.

Year	Army		Navy		Marine Corps		Air Force		Total DoD	
	Officers	Enlisted	Officers	Enlisted	Officers	Enlisted	Officers	Enlisted	Officers	Enlisted
1990	12,411	70,741	7,827	49,275	672	8,647	13,331	60,250	34,241	188,913
1995	10,821	56,666	7,899	44,375	690	7,402	12,068	51,478	31,478	159,921
2000	10,791	62,491	7,816	42,750	930	9,499	11,819	54,344	31,356	169,084
2005	12,442	57,196	7,816	43,698	1,093	9,849	13,470	54,906	34,821	165,649
2006	12,621	58,012	7,647	42,331	1,096	10,045	12,836	54,957	34,200	165,345
2007	12,983	58,117	7,611	41,144	1,138	10,568	11,835	52,595	33,567	162,424

DMDC Active Duty Master File (September 1990, 1995, 2000, 2005, 2006, 2007)

2.12. Percent of Female Officers and Female Enlisted on Active Duty Trends: 1990-2007

The percent of Active Duty officers that are women and the percent of Active Duty enlisted that are women are depicted in this chart. For 2007, 15.2 percent of Active Duty officers and 14.2 percent of Active Duty enlisted are women.

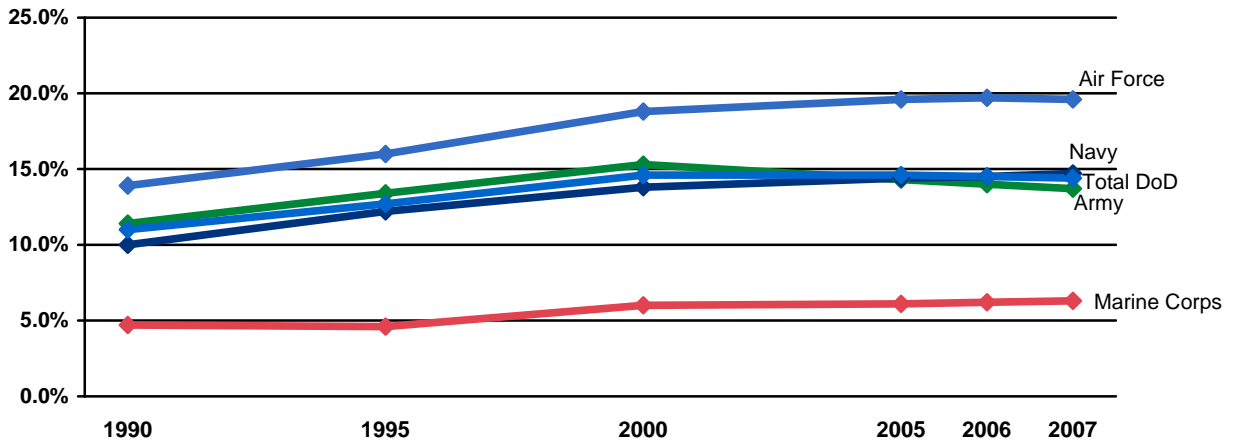
Year	Army		Navy		Marine Corps		Air Force		Total DoD	
	Officers	Enlisted	Officers	Enlisted	Officers	Enlisted	Officers	Enlisted	Officers	Enlisted
1990	11.8%	11.3%	10.8%	9.8%	3.4%	4.9%	13.3%	14.0%	11.5%	10.9%
1995	13.0%	13.4%	13.5%	12.0%	3.9%	4.7%	15.4%	16.2%	13.2%	12.6%
2000	14.0%	15.5%	14.7%	13.6%	5.2%	6.1%	17.1%	19.3%	14.4%	14.7%
2005	15.3%	14.1%	14.8%	14.3%	5.8%	6.1%	18.4%	19.9%	15.4%	14.4%
2006	15.3%	13.8%	14.7%	14.4%	5.8%	6.2%	18.2%	20.1%	15.3%	14.4%
2007	15.3%	13.4%	14.8%	14.7%	5.8%	6.3%	18.0%	20.0%	15.2%	14.2%

DMDC Active Duty Master File (September 1990, 1995, 2000, 2005, 2006, 2007)

WOMEN (CONT.)

2.13. Percent of Women on Active Duty by Service Branch Trends: 1990-2007

Between 1990 and 2000, the percent of women in the Active Duty force steadily increased. Since 2005, the percent of women in the force has remained relatively the same.



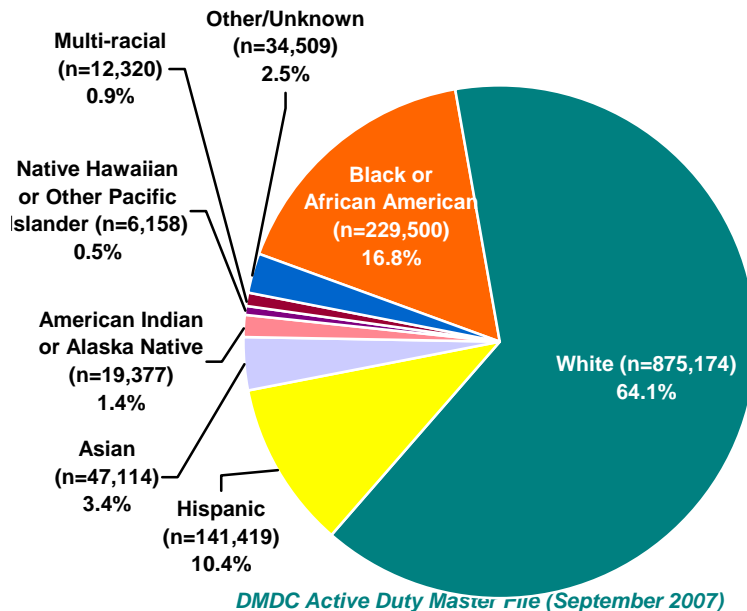
Note: Data are represented ONLY for the years indicated. Data for the years in between are NOT represented in this graph.

DMDC Active Duty Master File (September 1990, 1995, 2000, 2005, 2006, 2007)

RACE/ETHNICITY

2.14. Race/Ethnicity of Active Duty (N=1,365,571)

Members who report themselves as White make up the highest percent of Active Duty members (64.1%). Members who report themselves as Black or African American make up 16.8 percent. Hispanic, Asian, American Indian or Alaska Native, and Native Hawaiian or other Pacific Islander members make up 10.4 percent, 3.4 percent, 1.4 percent, and 0.5 percent respectively. Less than one percent (0.9%) of Active Duty members report themselves as multi-racial.



2.15. Percent of Active Duty Minorities and Non-minorities by Pay Grade and Service Branch

Self-reported minority categories include Black or African American, Hispanic, Asian, Native Hawaiian or other Pacific Islander, American Indian or Alaska Native, Multi-racial, and Other/Unknown. For 2007, minority members represent more than one-third (35.9%) of the Active Duty force.

Pay Grade	Army		Navy		Marine Corps		Air Force		Total DoD	
	Minority	Non-minority	Minority	Non-minority	Minority	Non-minority	Minority	Non-minority	Minority	Non-minority
O1-O3	29.0%	71.0%	22.8%	77.2%	23.4%	76.6%	23.7%	76.3%	25.3%	74.7%
O4-O6	22.9%	77.1%	17.9%	82.1%	16.7%	83.3%	15.6%	84.4%	18.8%	81.2%
O7-O10	10.4%	89.6%	4.9%	95.1%	9.5%	90.5%	5.9%	94.1%	7.6%	92.4%
W1-W5	36.7%	63.3%	34.6%	65.4%	32.9%	67.1%	N/A*	N/A*	36.1%	63.9%
E1-E4	33.3%	66.7%	52.0%	48.0%	26.8%	73.2%	28.2%	71.8%	35.1%	64.9%
E5-E6	45.0%	55.0%	46.0%	54.0%	41.3%	58.7%	33.7%	66.3%	41.9%	58.1%
E7-E9	50.9%	49.1%	36.8%	63.2%	43.2%	56.8%	29.8%	70.2%	41.3%	58.7%
Total	37.5%	62.5%	43.6%	56.4%	30.7%	69.3%	28.7%	71.3%	35.9%	64.1%

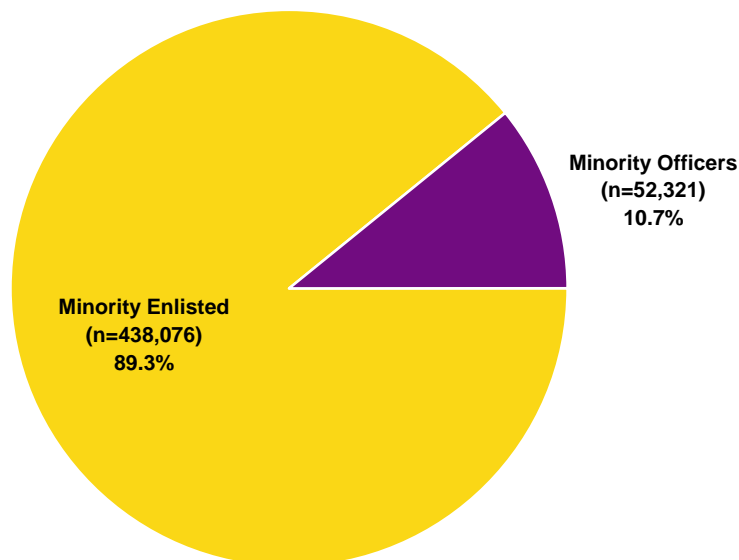
* The Air Force does not have Warrant Officers.

DMDC Active Duty Master File (September 2007)

RACE/ETHNICITY (CONT.)

**2.16. Minority Officers and Minority Enlisted on Active Duty
(N=490,397)**

Of the 497,051 Active Duty minority members, 10.7 percent are officers and 89.3 percent are enlisted members.



DMDC Active Duty Master File (September 2007)

2.17. Number and Ratio of Active Duty Minority Officers and Minority Enlisted by Service Branch

The Air Force has the highest ratio of minority officers to minority enlisted (1 to 6.1), while the Navy has the lowest ratio (1 to 12.3). The total DoD ratio of minority officers to minority enlisted (1 to 8.4) is lower than the total DoD ratio for all members (1 to 5.2).

Service Branch	Officers	Enlisted	Total	Ratio of Officers to Enlisted
Army	23,823	170,252	194,075	1 to 7.1
Navy	10,901	133,841	144,742	1 to 12.3
Marine Corps	4,358	52,893	57,251	1 to 12.1
Air Force	13,239	81,090	94,329	1 to 6.1
Total DoD	52,321	438,076	490,397	1 to 8.4

DMDC Active Duty Master File (September 2007)

RACE/ETHNICITY (CONT.)

2.18. Number of Active Duty Minority Officers and Enlisted by Race/Ethnicity and Service Branch

The number of Active Duty minority officers and enlisted personnel by race/ethnicity is presented for each Service branch. In total, there are 52,321 minority officers and 438,076 minority enlisted members currently serving within the DoD Active Duty.

Service Branch	Black or African American		Hispanic		Asian		Native Hawaiian or Other Pacific Islander	
	Officers	Enlisted	Officers	Enlisted	Officers	Enlisted	Officers	Enlisted
Army	10,979	92,960	4,752	50,765	3,090	14,363	N/A*	N/A*
Navy	4,108	54,589	2,851	42,247	1,804	16,094	107	1,893
Marine Corps	1,192	17,911	1,319	22,222	451	3,428	72	1,201
Air Force	3,926	43,835	2,469	14,794	1,850	6,034	168	2,717
Total DoD	20,205	209,295	11,391	130,028	7,195	39,919	347	5,811

Service Branch	American Indian or Alaska Native		Multi-racial		Other/Unknown		Minority Total	
	Officers	Enlisted	Officers	Enlisted	Officers	Enlisted	Officers	Enlisted
Army	404	4,104	N/A*	N/A*	4,598	8,060	23,823	170,252
Navy	254	11,209	640	4,871	1,137	2,938	10,901	133,841
Marine Corps	138	1,639	187	1,220	999	5,272	4,358	52,893
Air Force	223	1,406	622	4,780	3,981	7,524	13,239	81,090
Total DoD	1,019	18,358	1,449	10,871	10,715	23,794	52,321	438,076

* The Army does not report "Native Hawaiian or other Pacific Islander" or "Multi-racial."

DMDC Active Duty Master File (September 2007)

2.19. Percent of Active Duty Minority Officers and Enlisted by Race/Ethnicity and Service Branch

The percent of minority officers and enlisted in relation to the total number of Active Duty officers and enlisted are depicted in this table.

Service Branch	Black or African American		Hispanic		Asian		Native Hawaiian or Other Pacific Islander	
	Officers	Enlisted	Officers	Enlisted	Officers	Enlisted	Officers	Enlisted
Army	13.0%	21.5%	5.6%	11.7%	3.6%	3.3%	N/A*	N/A*
Navy	8.0%	19.4%	5.5%	15.0%	3.5%	5.7%	0.2%	0.7%
Marine Corps	6.1%	10.7%	6.7%	13.3%	2.3%	2.1%	0.4%	0.7%
Air Force	6.0%	16.6%	3.8%	5.6%	2.8%	2.3%	0.3%	1.0%
Total DoD	9.1%	18.3%	5.1%	11.4%	3.2%	3.5%	0.2%	0.5%

Service Branch	American Indian or Alaska Native		Multi-racial		Other/Unknown		Minority Total	
	Officers	Enlisted	Officers	Enlisted	Officers	Enlisted	Officers	Enlisted
Army	0.5%	0.9%	N/A*	N/A*	5.4%	1.9%	28.1%	39.3%
Navy	0.5%	4.0%	1.2%	1.7%	2.2%	1.0%	21.2%	47.7%
Marine Corps	0.7%	1.0%	1.0%	0.7%	5.1%	3.2%	22.1%	31.7%
Air Force	0.3%	0.5%	0.9%	1.8%	6.1%	2.9%	20.1%	30.8%
Total DoD	0.5%	1.6%	0.7%	1.0%	4.8%	2.1%	23.6%	38.3%

* The Army does not report "Native Hawaiian or other Pacific Islander" or "Multi-racial."

DMDC Active Duty Master File (September 2007)

RACE/ETHNICITY (CONT.)

2.20. Number of Active Duty Minority Officers and Enlisted by Service Branch Trends: 1990-2007

The total number of Active Duty minority officers has increased across all Services since 1990. The total number of minority enlisted personnel has increased in the Navy and Marine Corps but has decreased in the Army and Air Force.

Year	Army		Navy		Marine Corps		Air Force		Total DoD	
	Officers	Enlisted	Officers	Enlisted	Officers	Enlisted	Officers	Enlisted	Officers	Enlisted
1990	13,458	227,686	4,607	118,917	1,486	49,350	7,597	92,095	27,148	488,048
1995	12,147	150,523	5,150	97,104	1,671	42,494	5,938	66,872	24,906	356,993
2000	18,050	181,245	9,796	125,219	2,904	53,415	10,075	80,351	40,825	440,230
2005	21,252	169,254	10,773	129,354	4,563	57,957	14,103	85,479	50,691	442,044
2006	22,978	171,165	11,021	138,928	4,365	55,275	14,031	84,887	52,395	450,255
2007	23,823	170,252	10,901	133,841	4,358	52,893	13,239	81,090	52,321	438,076

Note: For years 1990 through 2002, information on only Active Duty members' race were available. For years 2003 through 2006, information on Active Duty members' race and ethnicity were available. Ethnicity was used to identify "Hispanic", "American Indian or Alaska Native", and "Asian" members, while race was used to identify "Black or African American", "Native Hawaiian or other Pacific Islander", "White", and "Multi-racial" members. To conform to the latest Office of Management and Budget (OMB) directives, ethnicity was used to identify "Hispanic" members, while race was used to identify all other minority designations in 2007.

DMDC Active Duty Master File (September 1990, 1995, 2000, 2005, 2006, 2007)

2.21. Percent of Active Duty Minority Officers and Enlisted by Service Branch Trends: 1990-2007

The percent of Active Duty officers who are minority members has more than doubled across all Service branches since 1990. The percent of minority enlisted members has also increased since 1990.

Year	Army		Navy		Marine Corps		Air Force		Total DoD	
	Officers	Enlisted	Officers	Enlisted	Officers	Enlisted	Officers	Enlisted	Officers	Enlisted
1990	12.8%	36.5%	6.4%	23.7%	7.5%	28.0%	7.6%	21.4%	9.1%	28.2%
1995	14.6%	35.7%	8.8%	26.2%	9.4%	27.1%	7.6%	21.0%	10.5%	28.2%
2000	23.5%	45.1%	18.4%	39.9%	16.2%	34.5%	14.6%	28.5%	18.8%	38.2%
2005	26.2%	41.8%	20.4%	42.4%	24.3%	36.0%	19.3%	31.0%	22.4%	38.5%
2006	27.8%	40.7%	21.2%	47.4%	23.0%	34.3%	19.9%	31.0%	23.4%	39.2%
2007	28.1%	39.3%	21.2%	47.7%	22.1%	31.7%	20.1%	30.8%	23.6%	38.3%

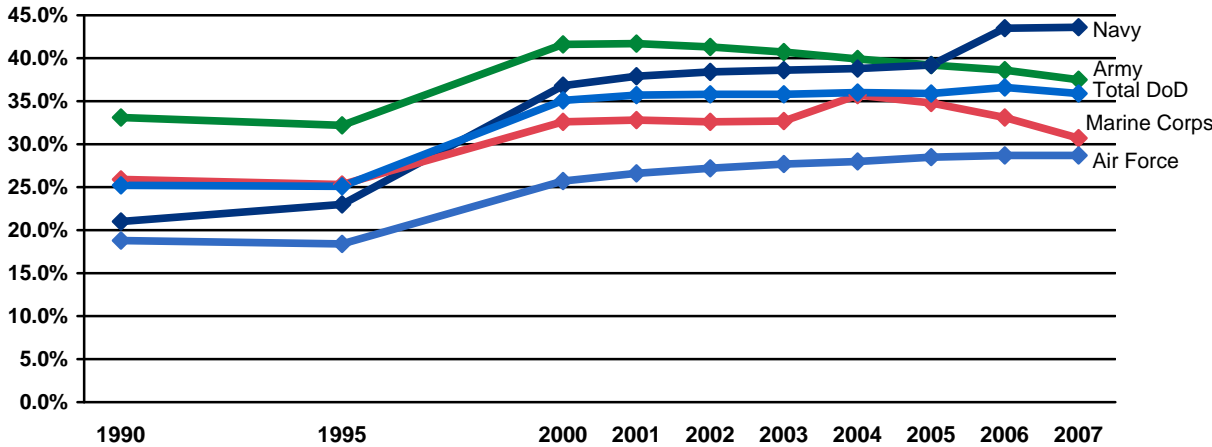
Note: For years 1990 through 2002, information on only Active Duty members' race were available. For years 2003 through 2006, information on Active Duty members' race and ethnicity were available. Ethnicity was used to identify "Hispanic", "American Indian or Alaska Native", and "Asian" members, while race was used to identify "Black or African American", "Native Hawaiian or other Pacific Islander", "White", and "Multi-racial" members. To conform to the latest Office of Management and Budget (OMB) directives, ethnicity was used to identify "Hispanic" members, while race was used to identify all other minority designations in 2007.

DMDC Active Duty Master File (September 1990, 1995, 2000, 2005, 2006, 2007)

RACE/ETHNICITY (CONT.)

2.22. Percent of Minorities on Active Duty by Service Branch Trends: 1990-2007

The percent of minority Active Duty members has risen considerably between 1990 and 2007 across the Service branches, with the Navy having the greatest increase.



Note: Data are represented ONLY for the years indicated. Data for the years in between are NOT represented in this graph.

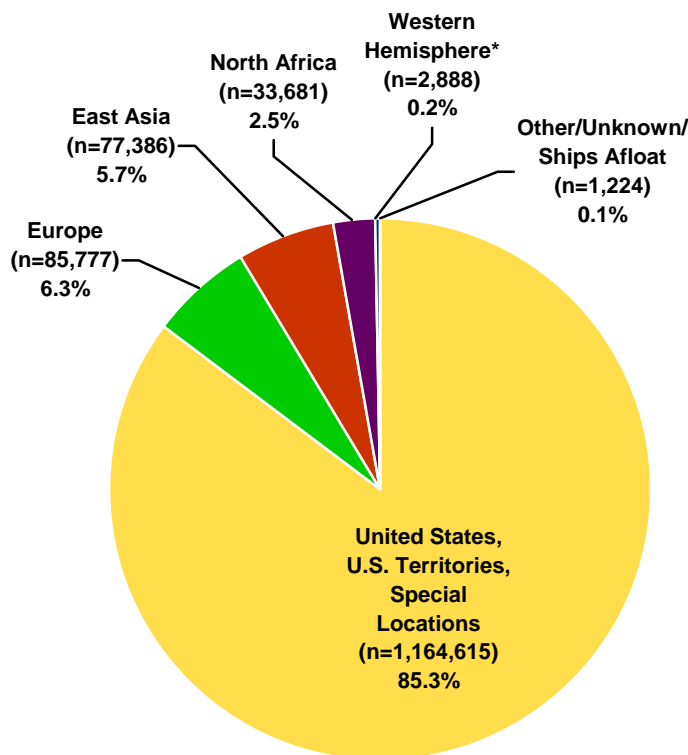
Note: For years 1990 through 2002, information on only Active Duty members' race were available. For years 2003 through 2006, information on Active Duty members' race and ethnicity were available. Ethnicity was used to identify "Hispanic", "American Indian or Alaska Native", and "Asian" members, while race was used to identify "Black or African American", "Native Hawaiian or other Pacific Islander", "White", and "Multi-racial" members. To conform to the latest Office of Management and Budget (OMB) directives, ethnicity was used to identify "Hispanic" members, while race was used to identify all other minority designations in 2007.

DMDC Active Duty Master File (September 1990, 1995, 2000, 2005, 2006, 2007)

GEOGRAPHIC LOCATION

2.23. Worldwide Geographic Location of Active Duty (n=1,365,571)

The majority of Active Duty members (85.3%) are stationed in the United States and U.S. Territories. The next largest percent of Active Duty members are stationed in Europe (6.3%) and East Asia (5.7%).



* Western Hemisphere does not overlap with the United States, U.S. Territories, Special Locations.

DMDC Active Duty Master File (September 2007)

2.24. Worldwide Geographic Location by Service Branch

For each service branch, the largest percent of Active Duty members are located in the U.S. For the Army and Air Force, the next largest percent are located in Europe, while for the Navy and Marine Corps, the next largest percent are located in East Asia and North Africa, respectively.

Location of Active Duty	Army	Navy	Marine Corps	Air Force
United States, U.S. Territories, Special Locations	85.9%	91.2%	76.3%	83.6%
Europe	9.1%	1.9%	0.5%	9.6%
East Asia	4.2%	5.8%	7.9%	6.6%
North Africa	0.6%	0.7%	14.8%	0.1%
Western Hemisphere*	0.1%	0.4%	0.2%	0.2%
Other/Unknown/Ships Afloat	0.1%	0.0%	0.4%	0.0%

* Western Hemisphere does not overlap with the United States, U.S. Territories, Special Locations.

DMDC Active Duty Master File (September 2007)

GEOGRAPHIC LOCATION (CONT.)

2.25. Geographic Location Number Trends: 1990-2007

The number of Active Duty personnel by geographic location from 1990 to 2007 is presented in the table below. Of the 1,365,571 Active Duty members, 1,164,615 are serving in the United States or its territories.

Location of Active Duty	1990	1995	2000	2005	2006	2007
United States, U.S. Territories, Special Locations	1,436,772	1,280,160	1,168,749	1,177,078	1,163,628	1,164,615
Europe	309,827	118,249	104,514	100,018	95,721	85,777
East Asia	119,118	89,306	78,346	81,703	80,115	77,386
North Africa	73,121	8,814	3,023	183	26,003	33,681
Western Hemisphere*	20,161	17,132	4,293	1,991	2,780	2,888
Unknown/Other/Ships Afloat**	87,145	4,563	11,753	5,467	4,422	1,224

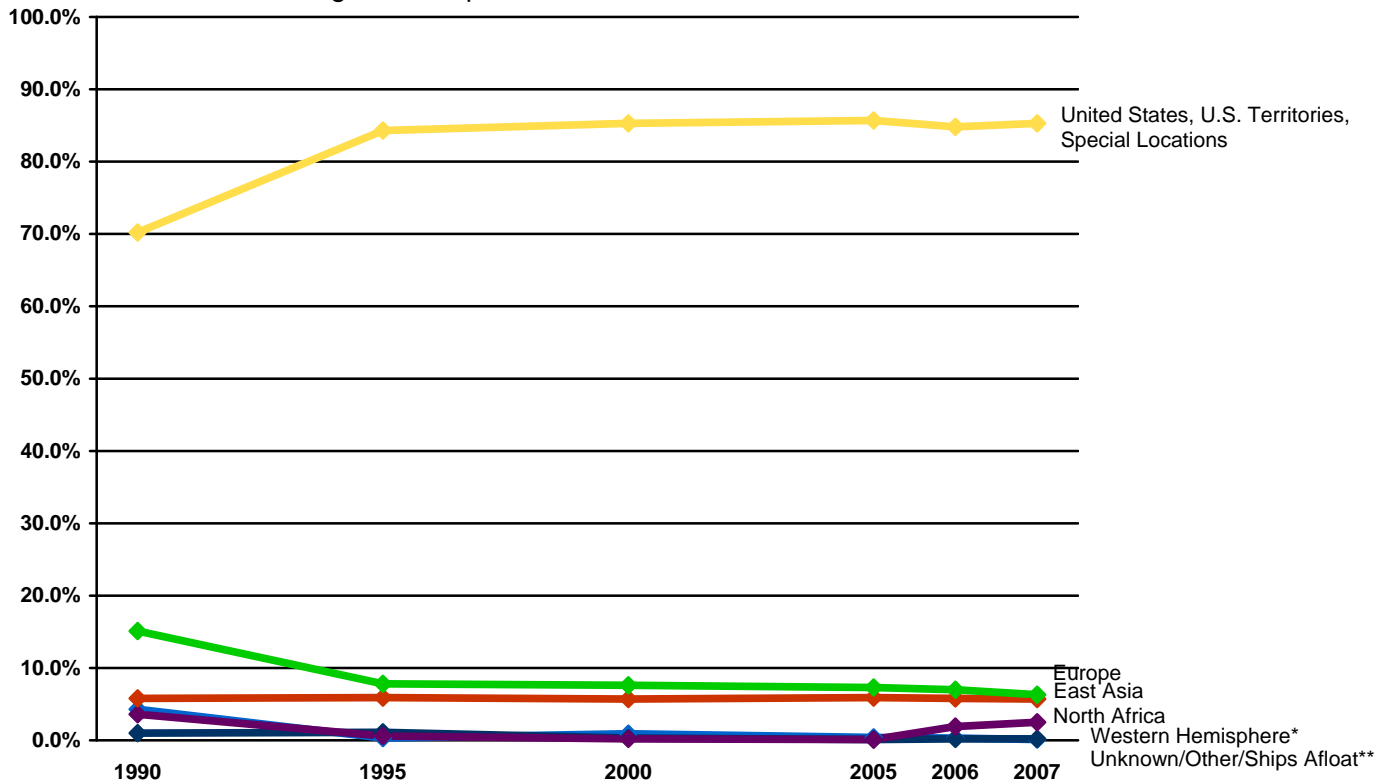
* Western Hemisphere does not overlap with the United States, U.S. Territories, Special Locations.

** Includes 86,776 undistributed personnel in 1990.

*Washington Headquarters Service, Directorate for Information Operations and Reports (1990, 1995, 2000);
DMDC Active Duty Master File (September 2005, 2006, 2007)*

2.26. Geographic Location Percent Trends: 1990-2007

The percentage of Active Duty personnel in the United States and its territories has increased from 70.2 percent in 1990 to 85.3 percent in 2007, while the percentage of personnel in East Asia has remained slightly under 6 percent. The percentage of personnel in all other geographic locations has decreased during this time period.



* Western Hemisphere does not overlap with the United States, U.S. Territories, Special Locations.

** Includes 86,776 undistributed personnel in 1990.

Note: Data are represented ONLY for the years indicated. Data for the years in between are NOT represented in this graph.

*Washington Headquarters Service, Directorate for Information Operations and Reports (1990, 1995, 2000);
DMDC Active Duty Master File (September 2005, 2006, 2007)*

GEOGRAPHIC LOCATION (CONT.)

2.27. Geographic Location of Active Duty within the United States

Eighty-five percent of Active Duty members are stationed in the United States and U.S. Territories. There are 1,159,025 Active Duty members stationed in the United States and 5,590 stationed in U.S. Territories. Of the personnel stationed in the United States, over half (54.5%) are located in six states (California, Virginia, Texas, North Carolina, Georgia, and Florida). The number of Active Duty members per state, including the District of Columbia, is presented below in descending order.

Rank	State	Number of Active Duty	Percent of Total U.S. Active Duty	Cumulative Percent
1	California	149,586	12.9	12.9
2	Virginia	132,286	11.4	24.3
3	Texas	123,577	10.7	35.0
4	North Carolina	96,797	8.4	43.3
5	Georgia	70,012	6.0	49.4
6	Florida	59,543	5.1	54.5
7	Washington	58,693	5.1	59.6
8	Hawaii	43,505	3.8	63.3
9	Kentucky	39,041	3.4	66.7
10	South Carolina	38,979	3.4	70.1
11	Colorado	27,966	2.4	72.5
12	Maryland	24,818	2.1	74.6
13	Illinois	23,722	2.0	76.7
14	Oklahoma	23,474	2.0	78.7
15	New York	22,233	1.9	80.6
16	Kansas	21,492	1.9	82.5
17	Arizona	20,026	1.7	84.2
18	Alaska	19,623	1.7	85.9
19	Missouri	17,283	1.5	87.4
20	Louisiana	15,320	1.3	88.7
21	Mississippi	12,805	1.1	89.8
22	District of Columbia	12,079	1.0	90.8
23	New Mexico	9,820	0.8	91.7
24	Nevada	9,300	0.8	92.5
25	Alabama	9,135	0.8	93.3
26	North Dakota	6,791	0.6	93.9
27	Ohio	6,487	0.6	94.4
28	Nebraska	6,439	0.6	95.0
29	New Jersey	6,238	0.5	95.5
30	Connecticut	6,118	0.5	96.0
31	Arkansas	5,104	0.4	96.5
32	Utah	4,936	0.4	96.9
33	Idaho	4,209	0.4	97.3
34	Montana	3,453	0.3	97.6
35	Delaware	3,373	0.3	97.9
36	South Dakota	3,160	0.3	98.1
37	Wyoming	2,980	0.3	98.4
38	Pennsylvania	2,803	0.2	98.6
39	Maine	2,705	0.2	98.9
40	Rhode Island	2,366	0.2	99.1
41	Tennessee	2,325	0.2	99.3
42	Massachusetts	2,068	0.2	99.5
43	Michigan	1,067	0.1	99.5
44	Indiana	768	0.1	99.6
45	Minnesota	750	0.1	99.7
46	New Hampshire	663	0.1	99.7
47	Oregon	549	0.0	99.8
48	Wisconsin	542	0.0	99.8
49	West Virginia	455	0.0	99.9
50	Iowa	304	0.0	99.9
51	Vermont	76	0.0	99.9
	Unknown*	1,181	0.1	100.0
	Total Active Duty in U.S.	1,159,025	100.0%	

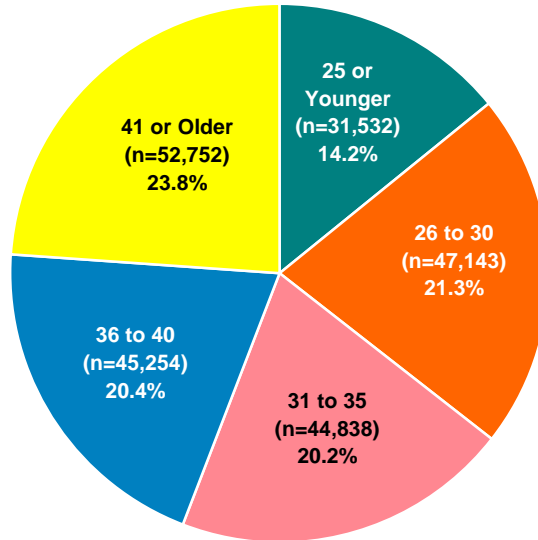
*Unknown includes Active Duty members located in the United States whose state information is unknown.

DMDC Active Duty Master File (September 2007)

AGE

2.28. Age of Active Duty Officers (N=221,519)

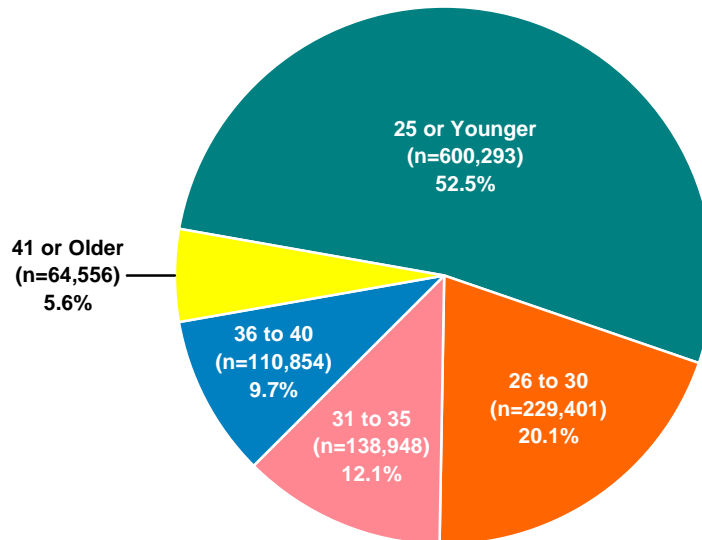
Over forty percent (44.2%) of Active Duty officers are 36 years of age or older, compared to 15.3 percent of enlisted. However, the U.S. population is even older, with about 52.4 percent 35 years of age or older in 2007.



DMDC Active Duty Master File (September 2007); United States Census (2007)

2.29. Age of Active Duty Enlisted (N=1,144,052)

Over half (52.5%) of Active Duty enlisted personnel are 25 years of age or younger, as compared to 14.2% of Active Duty officers.



DMDC Active Duty Master File (September 2007)

AGE (CONT.)

2.30. Age of Active Duty Officers and Enlisted by Service Branch

The number of Active Duty officers and enlisted personnel is presented by age and Service branch. Across the DoD, the largest number of officers are 41 or older, while the largest number of enlisted members are 25 or younger.

Age	Army		Navy		Marine Corps		Air Force		Total DoD	
	Officers	Enlisted	Officers	Enlisted	Officers	Enlisted	Officers	Enlisted	Officers	Enlisted
25 or Younger	12,263	221,802	6,511	138,556	3,276	121,207	9,482	118,728	31,532	600,293
26 to 30	17,861	89,768	10,665	58,504	4,670	23,661	13,947	57,468	47,143	229,401
31 to 35	17,511	54,504	9,816	37,657	4,363	11,562	13,148	35,225	44,838	138,948
36 to 40	17,003	43,630	10,428	29,615	4,187	6,966	13,636	30,643	45,254	110,854
41 or Older	20,044	23,397	14,011	16,506	3,188	3,345	15,509	21,308	52,752	64,556
Total	84,682	433,101	51,431	280,838	19,684	166,741	65,722	263,372	221,519	1,144,052

DMDC Active Duty Master File (September 2007)

2.31. Average Age of Active Duty Officers and Enlisted by Service Branch

The average age of Active Duty enlisted members is 27.1, while the average age of Active Duty officers is 34.6. The average age across the Service branches is relatively similar, with the exception of the Marine Corps, whose average age is slightly younger than the average age for the other Service branches.

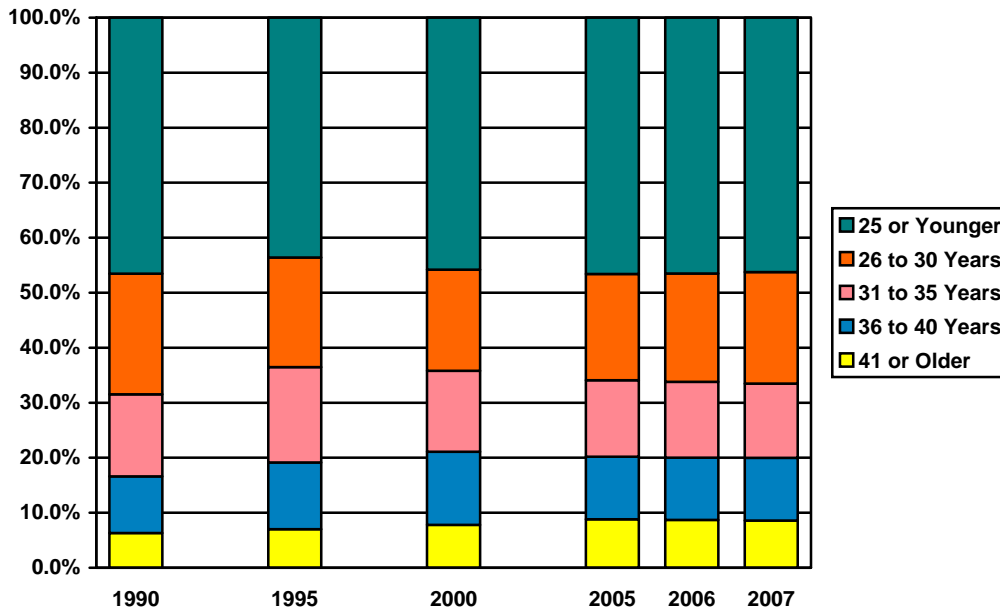
	Army	Navy	Marine Corps	Air Force	Total DoD
Officers	34.6	35.2	33.2	34.5	34.6
Enlisted	27.2	27.5	24.1	28.3	27.1
Total	28.4	28.7	25.0	29.6	28.3

DMDC Active Duty Master File (September 2007)

AGE (CONT.)

2.32. Active Duty Age Trends: 1990-2007

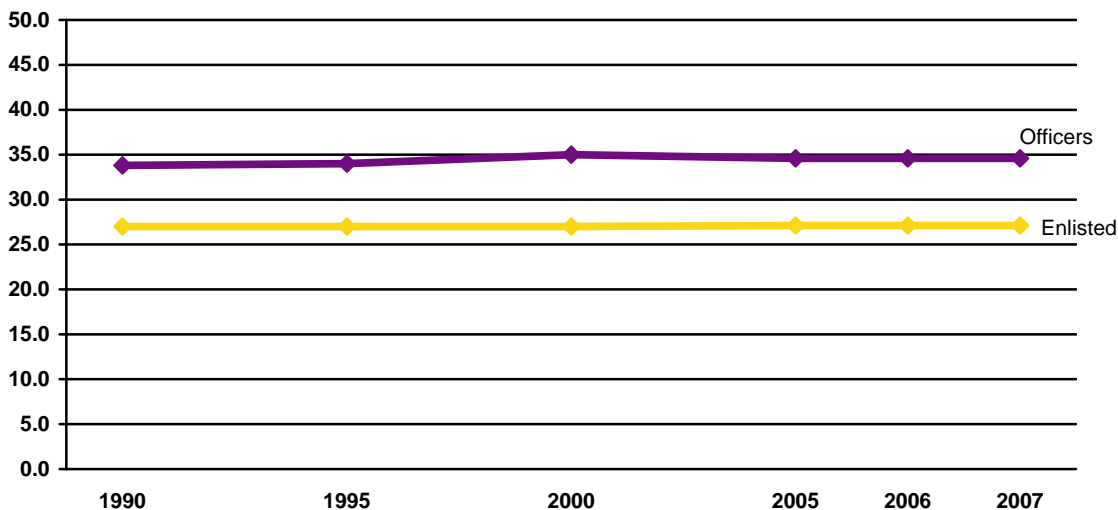
The percent of Active Duty members in each age category has fluctuated slightly over the years. The percent of members 41 or older has slightly decreased since 2006, but has increased the most between 1990 and 2007. Conversely, the percent of members 26 to 30 years old has increased since 2006, but has decreased the most since 1990.



DMDC Active Duty Master File (September 1990, 1995, 2000, 2005, 2006, 2007)

2.33. Average Age of Active Duty Officers and Enlisted Trends: 1990-2007

The average age of Active Duty officers and enlisted members has been steady over the last sixteen years.



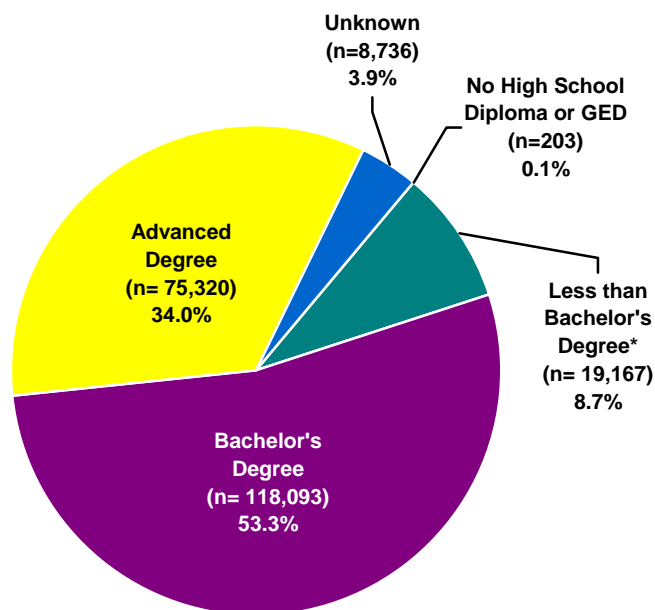
Note: Data are represented ONLY for the years indicated. Data for the years in between are NOT represented in this graph.

DMDC Active Duty Master File (September 1990, 1995, 2000, 2005, 2006, 2007)

EDUCATION

2.34. Education Level of Active Duty Officers (N=221,519)

Overall, the population of Active Duty officers has a higher level of formal education than the civilian population. The majority of officers (87.3%) have a Bachelor's or advanced degree, while, in 2007, only 27.5 percent of the U.S. population age 25 and over had a Bachelor's degree or higher.



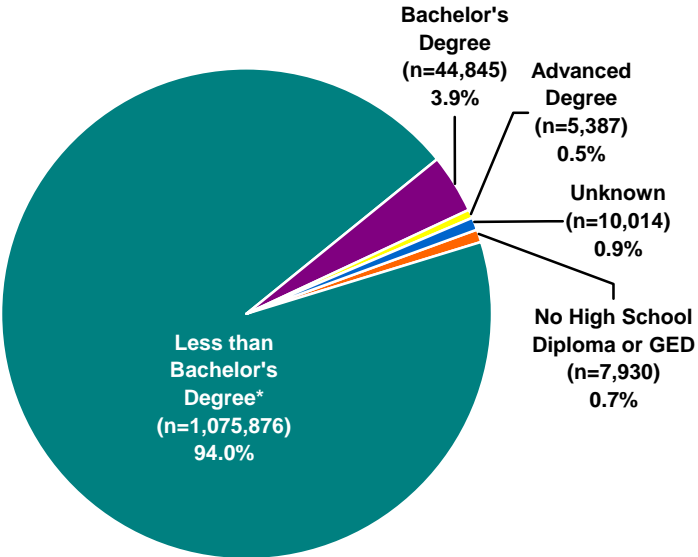
* Includes cases with at least a high school diploma and possibly additional education less than a Bachelor's degree (e.g., Associate's degree).

DMDC Active Duty Master File (September 2007); United States Census (2007)

EDUCATION (CONT.)

2.35. Education Level of Active Duty Enlisted (N=1,144,052)

Most Active Duty enlisted members have at least a high school diploma (98.4%), which is higher than the percent of the U.S. civilian population age 25 and over that had at least a high school diploma (84.5%) in 2007.



* Includes cases with at least a high school diploma and possibly additional education less than a Bachelor's degree (e.g., Associate's degree).

DMDC Active Duty Master File (September 2007); United States Census (2007)

EDUCATION (CONT.)

2.36. Education Level of Active Duty Officer Trends: 1990-2007

The percent of Active Duty officers with a bachelor's and advanced degree is slightly less than in 1990, while the percent of officers with less than a bachelor's degree has almost doubled since 1990.

	1990 (n=296,886)	1995 (n=238,012)	2000 (n=217,103)	2005 (n=226,127)	2006 (n=224,134)	2007 (n=221,519)
No High School Diploma or GED	0.0%	0.0%	0.1%	0.2%	0.1%	0.1%
Less than Bachelor's Degree*	4.7%	5.2%	6.0%	8.4%	8.5%	8.7%
Bachelor's Degree	54.0%	51.1%	49.9%	52.3%	52.0%	53.3%
Advanced Degree	35.6%	38.5%	40.0%	33.9%	34.0%	34.0%
Unknown	5.7%	5.1%	4.1%	5.2%	5.4%	3.9%

* Includes cases with at least a high school diploma and possibly additional education less than a Bachelor's degree (e.g., Associate's degree).

DMDC Active Duty Master File (September 1990, 1995, 2000, 2005, 2006, 2007)

2.37. Education Level of Active Duty Enlisted Trends: 1990-2007

Since 1990, the percent of Active Duty enlisted members who have a Bachelor's degree and/or an advanced degree has steadily increased (from 2.3% to 3.9% and from 0.2% to 0.5%, respectively). Furthermore, the percent of enlisted members with less than a Bachelor's degree, or no high school diploma or GED, has decreased during the same time period (from 94.8% to 94.0% and from 1.8% to 0.7%, respectively).

	1990 (n=1,732,414)	1995 (n=1,234,363)	2000 (n=1,153,575)	2005 (n=1,147,407)	2006 (n=1,148,535)	2007 (n=1,144,052)
No High School Diploma or GED	1.8%	0.8%	0.7%	0.8%	0.7%	0.7%
Less than Bachelor's Degree*	94.8%	94.8%	95.2%	94.1%	93.7%	94.0%
Bachelor's Degree	2.3%	3.1%	3.0%	3.7%	3.3%	3.9%
Advanced Degree	0.2%	0.3%	0.3%	0.4%	0.4%	0.5%
Unknown	0.9%	1.0%	0.8%	0.9%	1.8%	0.9%

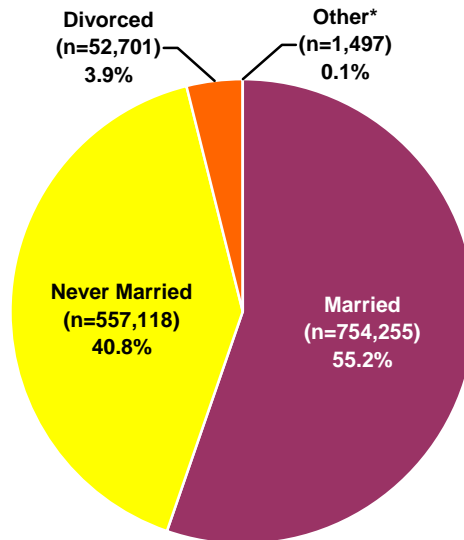
* Includes cases with at least a high school diploma and possibly additional education less than a Bachelor's degree (e.g., Associate's degree).

DMDC Active Duty Master File (September 1990, 1995, 2000, 2005, 2006, 2007)

MARITAL STATUS

2.38. Marital Status of Active Duty (N=1,365,571)

Of the Active Duty force, 55.2 percent are reported as married in 2007. For both groups, “married” includes those who are married or remarried.



* Includes annulled, widowed, and unknown cases.

Note: The Navy only reports “Married” or “Never Married” for military members’ marital status.

DMDC Active Duty Master File (September 2007); United States Census (2007)

2.39. Percent of Married Personnel on Active Duty by Pay Grade and Service Branch (N=754,255)

This table displays the military members who are married as a percent of the total number of military members in that pay grade and Service branch. For example, of the 41,876 junior officers in the Army, 22,802, or 54.5 percent, are married. Across the Service branches, senior enlisted and senior officers are more likely to be married. The Service branch with the highest percent of married members is the Air Force (60.6%).

Service Branch	O1-O3	O4-O6	O7-O10	W1-W5	E1-E4	E5-E6	E7-E9	Total
Army	54.5%	86.9%	97.8%	81.9%	35.4%	69.8%	83.9%	55.5%
Navy	57.2%	86.7%	95.1%	88.1%	30.8%	66.2%	86.1%	55.1%
Marine Corps	54.1%	89.4%	95.2%	88.6%	26.5%	70.7%	86.5%	45.1%
Air Force	59.9%	87.6%	97.9%	N/A*	35.6%	72.2%	85.2%	60.6%
Total DoD	56.8%	87.3%	96.9%	83.2%	32.8%	69.5%	85.0%	55.2%

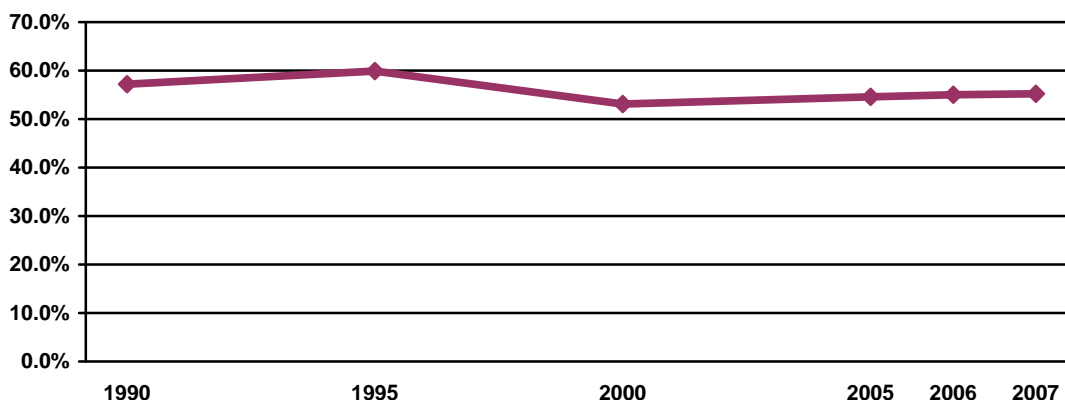
* The Air Force does not have Warrant Officers.

DMDC Active Duty Master File (September 2007)

MARITAL STATUS (CONT.)

2.40. Marriage Trends of Active Duty: 1990-2007

The percent of Active Duty members who are married has fluctuated over the years. In 2007, marital rates for the total DoD (55.2%) were lower than the 1995 peak of 59.9 percent but slightly higher than last year's 55.0 percent.

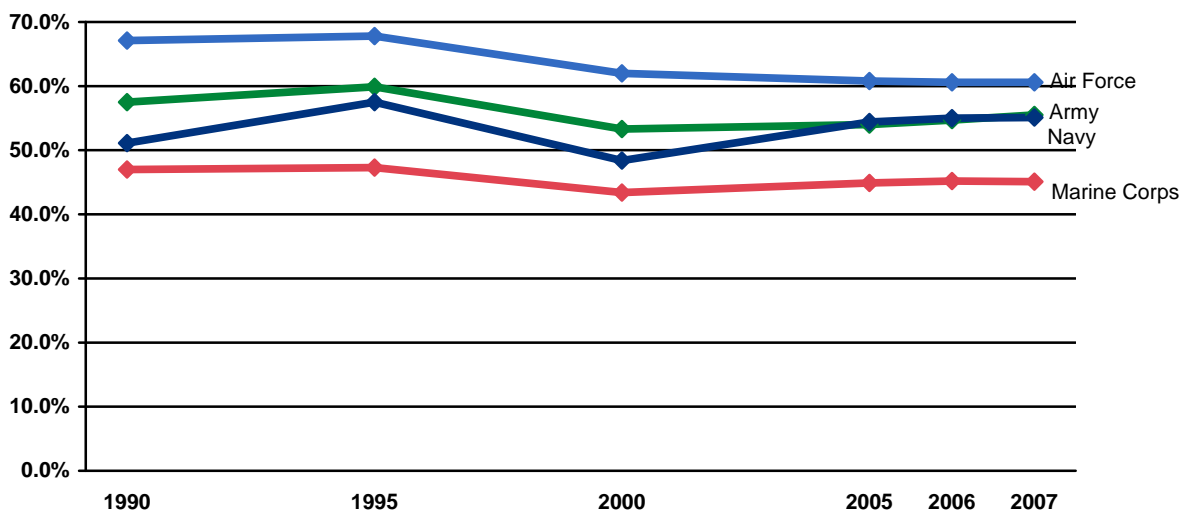


Note: Data are represented ONLY for the years indicated. Data for the years in between are NOT represented in this graph.

DMDC Active Duty Master File (September 1990, 1995, 2000, 2005, 2006, 2007)

2.41. Marriage Trends by Service Branch: 1990-2007

While the percent of married Active Duty members decreased between 1990 and 2000, the percent of married Army, Marine Corps, and Air Force members has remained relatively the same since 2000 and the percent of married Navy members has increased.



Note: Data are represented ONLY for the years indicated. Data for the years in between are NOT represented in this graph.

DMDC Active Duty Master File (September 1990, 1995, 2000, 2005, 2006, 2007)

MARITAL STATUS (CONT.)

2.42. Percent of Married Active Duty by Service Branch Trends: 1990-2007

The Air Force consistently has the highest percent of military members who are married.

Service Branch	1990	1995	2000	2005	2006	2007
Army	57.5%	59.9%	53.3%	54.0%	54.7%	55.5%
Navy	51.1%	57.5%	48.4%	54.4%	55.0%	55.1%
Marine Corps	47.0%	47.3%	43.4%	44.9%	45.2%	45.1%
Air Force	67.1%	67.8%	62.0%	60.8%	60.6%	60.6%
Total DoD	57.2%	59.9%	53.1%	54.6%	55.0%	55.2%

DMDC Active Duty Master File (September 1990, 1995, 2000, 2005, 2006, 2007)

2.43. Average Age of Married Active Duty Officers by Service Branch Trends: 1990-2007

The mean age of married Active Duty officers has increased slightly since 1990 but has remained stable over the last seven years.

Service Branch	1990	1995	2000	2005	2006	2007
Army	35.7	35.8	36.3	36.7	36.6	36.6
Navy	35.9	35.9	37.3	37.4	37.4	37.4
Marine Corps	34.6	35.1	35.3	35.5	35.5	35.5
Air Force	35.9	36.0	36.4	36.3	36.4	36.4
Total DoD	35.7	35.8	36.5	36.6	36.6	36.6

DMDC Active Duty Master File (September 1990, 1995, 2000, 2005, 2006, 2007)

2.44. Average Age of Married Active Duty Enlisted by Service Branch Trends: 1990-2007

Although the mean age of married enlisted personnel is slightly higher in 2007 than it was in 1990, the mean age has decreased in the last seven years.

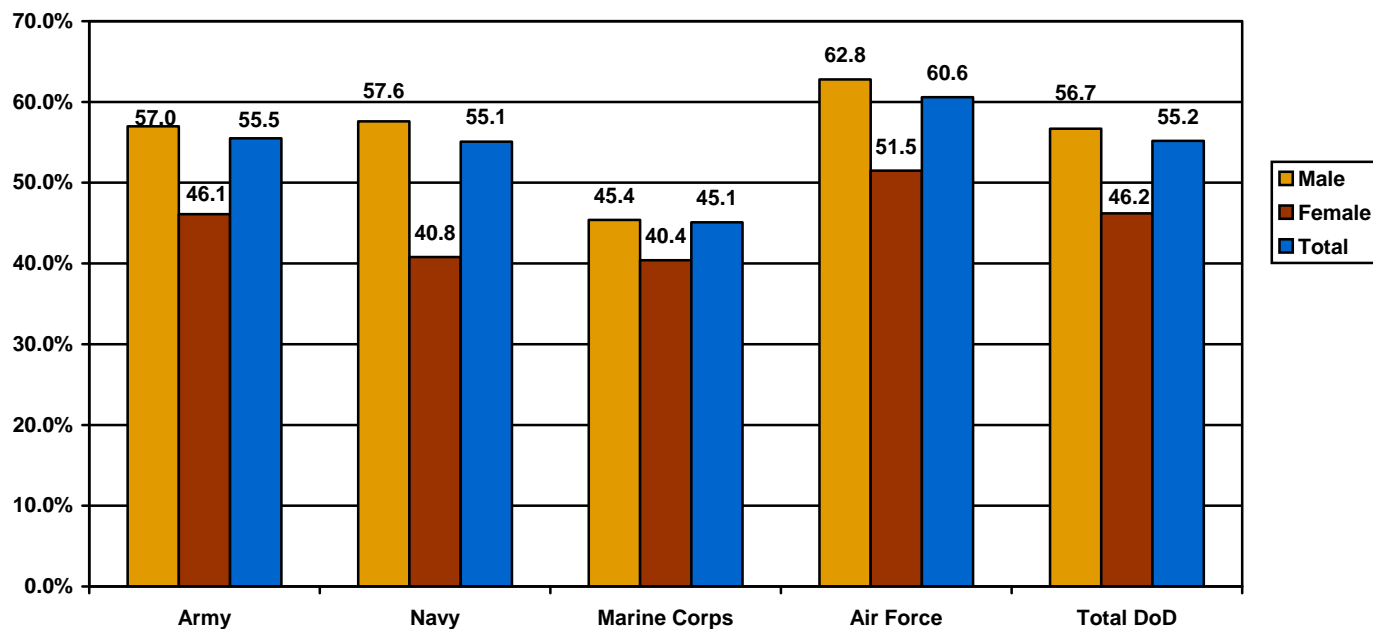
Service Branch	1990	1995	2000	2005	2006	2007
Army	30.5	30.1	30.4	30.3	30.2	30.1
Navy	32.1	30.4	32.1	30.5	30.5	30.5
Marine Corps	28.0	28.0	28.0	27.4	27.3	27.2
Air Force	31.6	30.7	31.6	31.0	30.9	30.9
Total DoD	29.6	30.1	30.9	30.2	30.1	30.0

DMDC Active Duty Master File (September 1990, 1995, 2000, 2005, 2006, 2007)

MARITAL STATUS (CONT.)

2.45. Percent of Married Active Duty by Gender and Service Branch

This chart presents Active Duty members who are married as a percent of the total number of Active Duty members of that gender and Service branch. Of the 195,991 females on Active Duty, 46.2 percent are married. Of the 1,169,580 males on Active Duty, 56.7 percent are married.



DMDC Active Duty Master File (September 2007)

2.46. Gender of Married Active Duty by Service Branch

Of the 754,255 military members who are married, 663,655 or 88.0 percent are male and 90,600 or 12.0 percent are female.

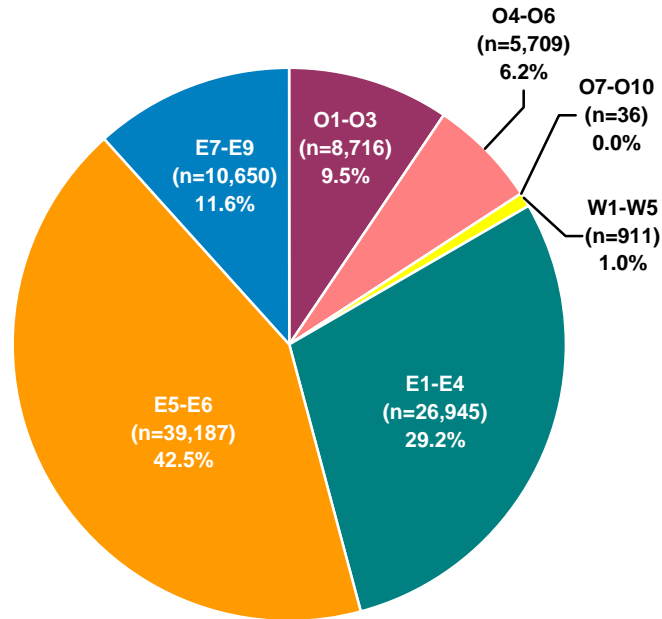
Gender	Army	Navy	Marine Corps	Air Force	Total DoD
Male	254,786	163,297	79,384	166,188	663,655
Female	32,793	19,887	4,724	33,196	90,600
Total	287,579	183,184	84,108	199,384	754,255

DMDC Active Duty Master File (September 2007)

MARITAL STATUS (CONT.)

2.47. Number of Active Duty Members in Dual-military Marriages by Pay Grade (N=92,154)

A dual-military marriage refers to an Active Duty member who is married to another Active Duty member or to a Reserve or Guard member. In total, 83.3 percent of dual-military marriages are among enlisted Active Duty members, while 16.7 percent of dual-military marriages are among officers.



DMDC Active Duty Master File (September 2007)

2.48. Percent of Active Duty Members in Dual-military Marriages by Gender and Service Branch (N=1,365,571)

Out of the 1,365,571 Active Duty members, 6.7 percent are in dual-military marriages. The Air Force has the highest percent of military members in a dual-military marriage (12.8%). In all Service branches, a higher percentage of female military members are in dual-military marriages than males. In particular, over one-quarter of female Marine Corps members (26.0%) and female Air Force members (30.3%) are married to another military member.

Gender of Active Duty Member	Army	Navy	Marine Corps	Air Force	Total DoD
Male	2.8%	3.2%	2.3%	8.5%	4.1%
Female	17.3%	18.8%	26.0%	30.3%	22.5%
Total	4.8%	5.4%	3.8%	12.8%	6.7%

DMDC Active Duty Master File (September 2007)

MARITAL STATUS (CONT.)

2.49. Percent of Married Active Duty Members in Dual-military Marriages by Gender and Service Branch (N=754,255)

Out of the 754,255 Active Duty members who are married, 12.2 percent are in dual-military marriages. Over half of married female members in the Marine Corps and Air Force are in dual-military marriages.

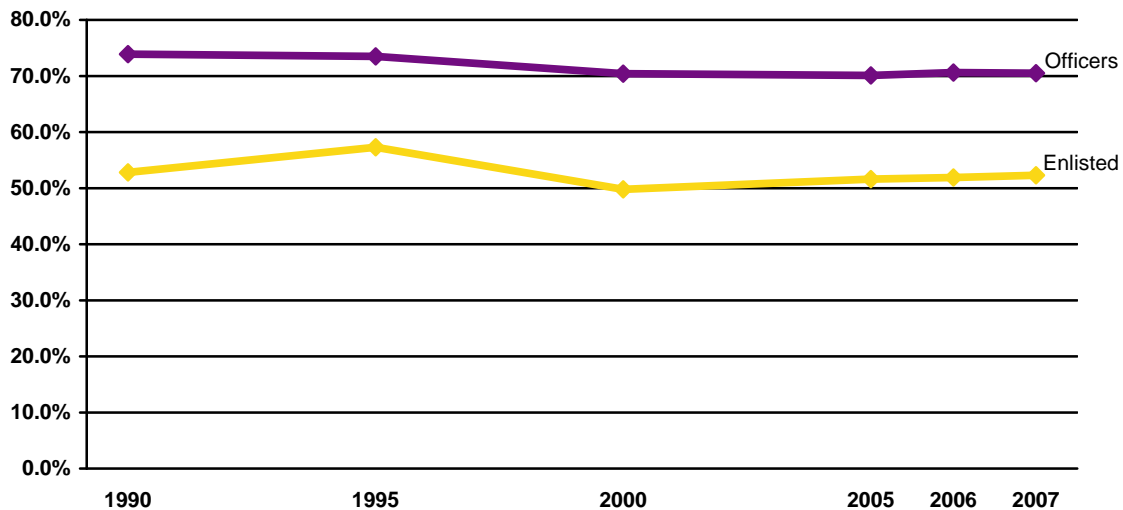
Gender of Active Duty Member	Army	Navy	Marine Corps	Air Force	Total DoD
Male	5.0%	5.5%	5.1%	13.5%	7.3%
Female	37.6%	46.0%	64.4%	58.7%	48.6%
Total	8.7%	9.9%	8.4%	21.1%	12.2%

DMDC Active Duty Master File (September 2007)

MARITAL STATUS (CONT.)

2.50. Marriage Trends Among Active Duty Officers and Enlisted: 1990-2007

For 2007, 70.5 percent of Active Duty officers and 52.3 percent of enlisted members report that they are married. This is a decrease from the percent of officers and enlisted who were married in 1990 and 1995.



Note: Data are represented ONLY for the years indicated. Data for the years in between are NOT represented in this graph.

DMDC Active Duty Master File (September 1990, 1995, 2000, 2005, 2006, 2007)

2.51. Percent of Married Officers and Enlisted on Active Duty Trends: 1990-2007

The percentage of married officers and married enlisted personnel declined from 1990 to 2000. Since 2000, the percentage of married officers has remained relatively stable, while the percentage of married enlisted members has increased by 2.5 percent.

Year	Officers	Enlisted	Total DoD
1990	73.9%	52.8%	57.2%
1995	73.5%	57.3%	59.9%
2000	70.4%	49.8%	53.1%
2005	70.1%	51.6%	54.6%
2006	70.6%	51.9%	55.0%
2007	70.5%	52.3%	55.2%

DMDC Active Duty Master File (September 1990, 1995, 2000, 2005, 2006, 2007)

MARITAL STATUS (CONT.)

2.52. Estimated Divorces by Service Branch and Pay Grade

The DoD collects information on marital status year to year. The number of divorces are estimated by comparing the number of people who indicated that they were married in 2006, but no longer indicate a status of married in 2007. Additionally, the number of divorces displayed are a count of divorces that occurred in 2007, not a count of all military members who are divorced. The percents are calculated by taking the count and dividing it by the number of people that were married in 2006.

	Officer			Enlisted			Total		
	Married as of Sept 2006	Divorced in 2007		Married as of Sept 2006	Divorced in 2007		Married as of Sept 2006	Divorced in 2007	
	n	n	%	n	n	%	n	n	%
Army	58,261	1,172	2.0%	216,755	7,962	3.7%	275,016	9,134	3.3%
Navy	50,481	758	1.5%	158,161	6,592	4.2%	208,642	7,350	3.5%
Marine Corps	13,266	227	1.7%	68,221	2,488	3.6%	81,487	2,715	3.3%
Air Force	36,204	640	1.8%	153,466	5,419	3.5%	189,670	6,059	3.2%
Total DoD	158,212	2,797	1.8%	596,603	22,461	3.8%	754,815	25,258	3.3%

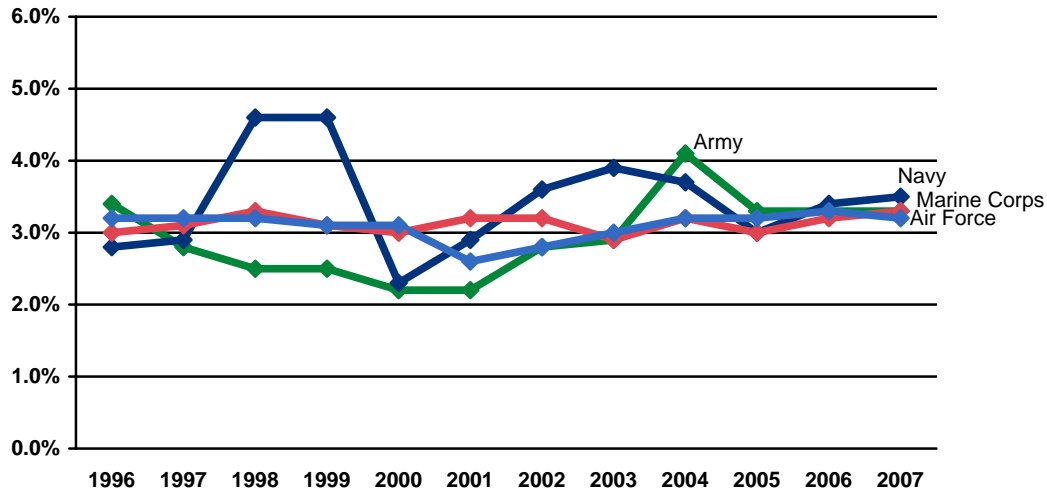
Note: These figures include widowed cases. However, the number of people who were widowed last year is expected to be small and should not affect the percents.

DMDC Active Duty Master File (September 2006, 2007)

MARITAL STATUS (CONT.)

2.53. Estimated Percent of Divorces by Service Branch Trends: 1996-2007

This graph presents the estimated percent of married Active Duty who divorced during Fiscal Years 1996-2007.



Note: These figures include widowed cases. However, the number of people who were widowed last year is expected to be small and should not affect the percents.

DMDC Active Duty Master File (September 1996, 1997, 1998, 1999, 2000, 2001, 2002, 2003, 2004, 2005, 2006, 2007)

2.54. Estimated Percent of Divorces Among Active Duty Officers and Enlisted by Service Branch Trends: 2000-2007

The estimated divorce rate has increased slightly from 2000 to 2007 for officers in all Service branches. Divorce trends are more varied for enlisted personnel during this time period, ranging from a slight decrease in the divorce rate for enlisted Air Force members to a steady increase for both Navy and Army enlisted members.

Service Branch	2000		2005		2006		2007	
	Officers	Enlisted	Officers	Enlisted	Officers	Enlisted	Officers	Enlisted
Army	1.7%	2.3%	2.3%	3.6%	2.1%	3.6%	2.0%	3.7%
Navy	1.1%	2.6%	2.1%	3.2%	2.1%	3.7%	1.5%	4.2%
Marine Corps	1.6%	3.3%	1.6%	3.2%	1.7%	3.5%	1.7%	3.6%
Air Force	1.3%	3.6%	1.5%	3.7%	1.5%	3.8%	1.8%	3.5%
Total DoD	1.4%	2.9%	1.9%	3.5%	1.9%	3.7%	1.8%	3.8%

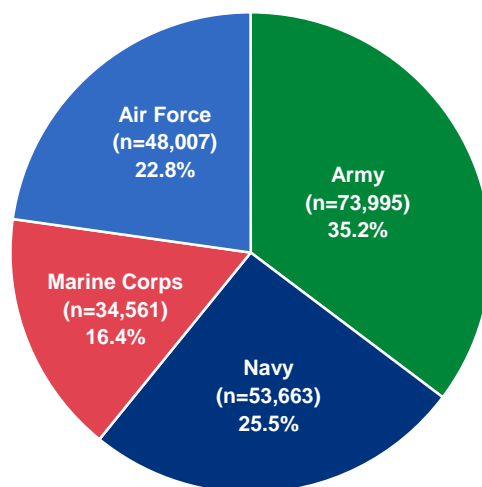
Note: These figures include widowed cases. However, the number of people who were widowed last year is expected to be small and should not affect the percents.

DMDC Active Duty Master File (September 2000, 2005, 2006, 2007)

ACTIVE DUTY SEPARATIONS

2.55. Active Duty Separations by Service Branch (N=210,226)

In 2007, 210,226 Active Duty members left the DoD. The pie chart below depicts the percent of the total that left, or separated, by each service branch. The largest percent of separations are from the Army (35.2%), while the smallest percent are from the Marine Corps (16.4%).

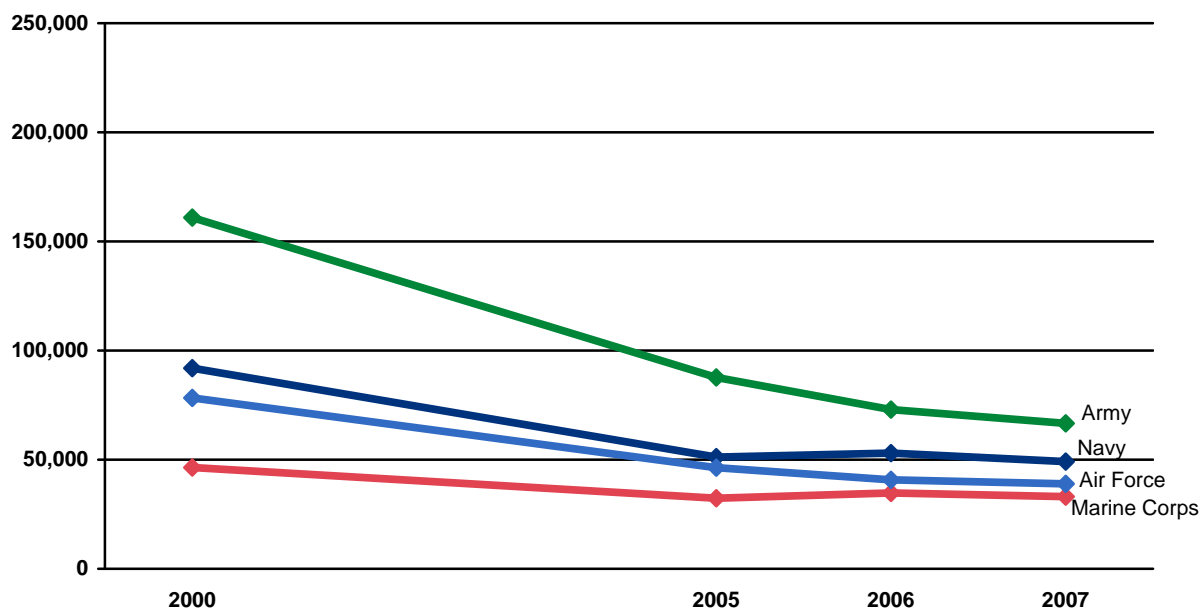


Note: Excludes immediate reenlistments for enlisted, status changes for officers and record corrections for both enlisted and officers.

DMDC Active Duty Master File (September 2007)

2.56. Active Duty Separations by Service Branch Trends: 2000-2007

The total number of Active Duty separations has decreased substantially from 2000 to 2007 across all Service branches.



DMDC Military Personnel File (September 2000, 2005, 2006, 2007)

ACTIVE DUTY SEPARATIONS (CONT.)

2.57. Active Duty Separations Among Officers and Enlisted by Service Branch

A total of 22,446 officers and 187,780 enlisted separated from the Active Duty in 2007. The largest type of separations for enlisted members and officers was voluntary separations.

Type of Separation	Army		Navy		Marine Corps		Air Force		Total DoD	
	Officers	Enlisted	Officers	Enlisted	Officers	Enlisted	Officers	Enlisted	Officers	Enlisted
Involuntary	227	18,929	288	16,208	120	9,718	270	9,357	905	54,212
Voluntary	3,999	32,716	1,948	23,035	666	20,124	5,259	17,292	11,872	93,167
Retirement*	3,010	13,973	2,264	9,728	701	2,955	3,522	12,172	9,497	38,828
Death	106	1,035	29	163	21	256	16	119	172	1,573
Total	7,342	66,653	4,529	49,134	1,508	33,053	9,067	38,940	22,446	187,780

* Includes disability and non-disability retirements.

Note: Excludes immediate reenlistments for enlisted, status changes for officers and record corrections for enlisted and officers.

DMDC Active Duty Master File (September 2007)

2.58. Active Duty Officer and Enlisted Separations by Type of Separation and Service Branch

Of the 210,226 Active Duty separations in 2007, 22,446 were officers and 187,780 were enlisted. Voluntary separations, including expiration of term of service (ETS) and early release, were the most common type of separation for both groups.

Type of Separation	Army		Navy		Marine Corps		Air Force		Total DoD	
	Officers	Enlisted	Officers	Enlisted	Officers	Enlisted	Officers	Enlisted	Officers	Enlisted
ETS/Voluntary/ Early Release	3,989	23,518	1,923	19,813	662	18,565	5,233	15,150	11,807	77,046
Personal/Family	10	5,355	25	1,849	4	546	26	1,403	65	9,153
Medical/Disability	234	6,261	83	1,458	25	1,413	166	1,993	508	11,125
Military Requirement/ Behavior/Performance	143	10,012	124	8,435	58	4,081	22	5,457	347	27,985
Death	106	1,035	29	163	21	256	16	119	172	1,573
Other Military Service	N/A*	3,843	N/A*	1,373	N/A*	1,013	N/A*	739	N/A*	6,968
Legal Issues/Standards of Conduct	3	8,332	40	5,745	12	4,995	55	1,821	110	20,893
Non-Selection for Promotion	51	N/A*	100	N/A*	43	N/A*	82	N/A*	276	NA*
Non-Disability Retirement	2,776	7,712	2,181	8,270	676	1,542	3,356	10,179	8,989	27,703
Other	30	585	24	2,028	7	642	111	2,079	172	5,334
Subtotal	7,342	66,653	4,529	49,134	1,508	33,053	9,067	38,940	22,446	187,780
Total	73,995		53,663		34,561		48,007		210,226	

* Other Military Service separations are not applicable for officers and Non-Selection for Promotion separations are not applicable for enlisted.

Note: Excludes immediate reenlistments for enlisted, status changes for officers and record corrections for enlisted and officers.

DMDC Active Duty Master File (September 2007)

ACTIVE DUTY SEPARATIONS (CONT.)

2.59. Active Duty Retirements Among Officers and Enlisted by Service Branch

As of 2007, the total number of retired personnel from Active Duty service is 1,534,019. Of the Service branches, the Air Force has the largest number of retired personnel (557,561), followed by the Army (454,903), the Navy (415,519), and the Marine Corps (106,036).

Type of Retirement	Army		Navy		Marine Corps		Air Force		Total DoD	
	Officers	Enlisted	Officers	Enlisted	Officers	Enlisted	Officers	Enlisted	Officers	Enlisted
Non-disability	87,695	310,787	76,814	303,002	23,120	59,561	104,909	421,974	292,538	1,095,324
Permanent disability	3,222	50,051	2,887	30,180	1,333	19,839	2,814	26,792	10,256	126,862
Temporary disability	151	2,997	132	2,504	90	2,093	80	992	453	8,586
Subtotal	91,068	363,835	79,833	335,686	24,543	81,493	107,803	449,758	303,247	1,230,772
Total	454,903		415,519		106,036		557,561		1,534,019	

Official Guard and Reserve Manpower Strengths & Statistics book (1147/48) FY 2007 Summary