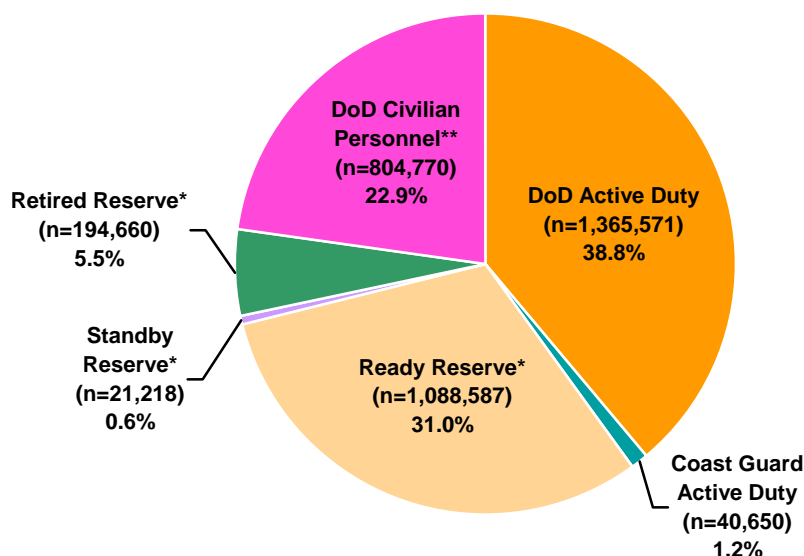


TOTAL MILITARY FORCE

1.01. Number and Percent of Military Force Personnel (N=3,515,456)

The total military force is comprised of 3,515,456 people who are Active Duty and Reserve and Guard members from all branches of the DoD, civilian personnel who support the DoD, and the DHS's Coast Guard. DoD's Active Duty members make up 38.8% of the total military force. Data for all Active Duty members and their families are presented in Sections II and III.

All Reserve and Guard manpower is assigned to one of three Reserve Component categories: the Ready Reserve, the Standby Reserve or the Retired Reserve. The Ready Reserve makes up 31.0% of the total military force. The Ready Reserve is comprised of the Selected Reserve, the Individual Ready Reserve, and the Inactive National Guard. Because Selected Reserve members train throughout the year and participate annually in Active Duty training exercises, they are the primary focus of the Reserve sections of this report. The DHS's Coast Guard Reserve members are frequently called for duty, therefore, their data are included as well. Data for all Selected Reserve members and their families are presented in Sections IV and V.



* Includes Coast Guard Reserve.

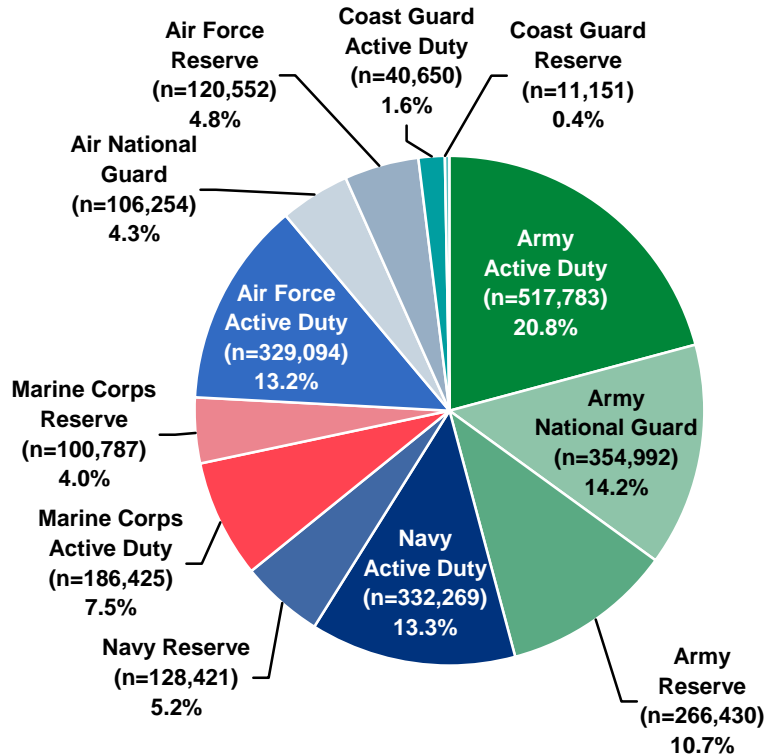
** Includes non-appropriated funds civilians and appropriated funds civilians.

*DMDC Active Duty Master File (September 2007);
DMDC Reserve Component Common Personnel Data System (September 2007);
DMDC Civilian Personnel File (September 2007)*

ACTIVE DUTY AND READY RESERVE

1.02. Military Personnel by DoD Component and Coast Guard (N=2,494,808)

Active Duty and Reserve and Guard members of the Army make up the largest percent of military personnel (45.7%), followed by Active Duty and Reserve and Guard members of the Air Force (22.3%), the Navy (18.5%), the Marine Corps (11.5%), and the Coast Guard (2.0%).

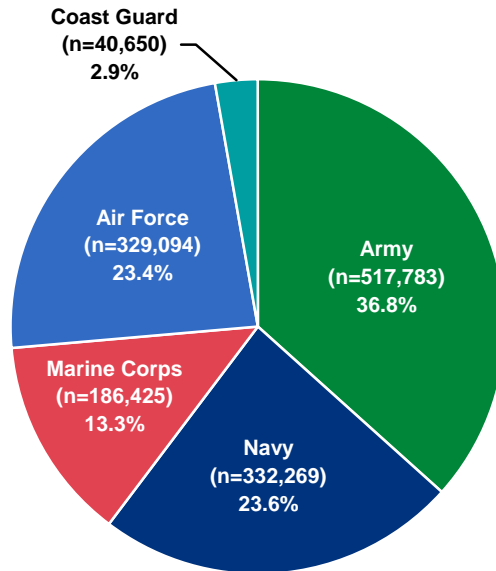


DMDC Active Duty Master File (September 2007);
DMDC Reserve Component Common Personnel Data System (September 2007)

ACTIVE DUTY AND READY RESERVE (CONT.)

**1.03. Active Duty by Service Branch
(N=1,406,221)**

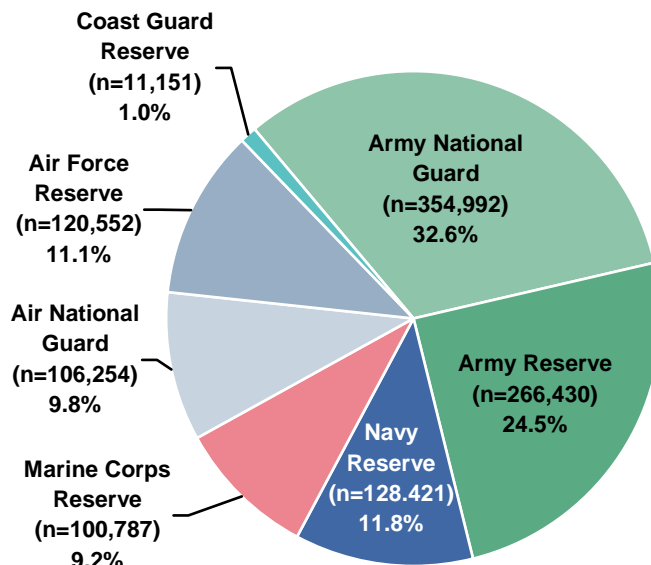
Of the 1,406,221 Active Duty members, the largest proportion are serving in the Army (36.8%), followed by the Navy (23.6%), Air Force (23.4%), Marine Corps (13.3%), and Coast Guard (2.9%).



DMDC Active Duty Master File (September 2007)

**1.04. Ready Reserve by Reserve Component
(N=1,088,587)**

Of the 1,088,587 members of the Ready Reserve, the largest proportion are serving in the Army National Guard (32.6%), followed by the Army Reserve (24.5%), Navy Reserve (11.8%), Air Force Reserve (11.1%), Air National Guard (9.8%), Marine Corps Reserve (9.2%), and Coast Guard Reserve (1.0%).

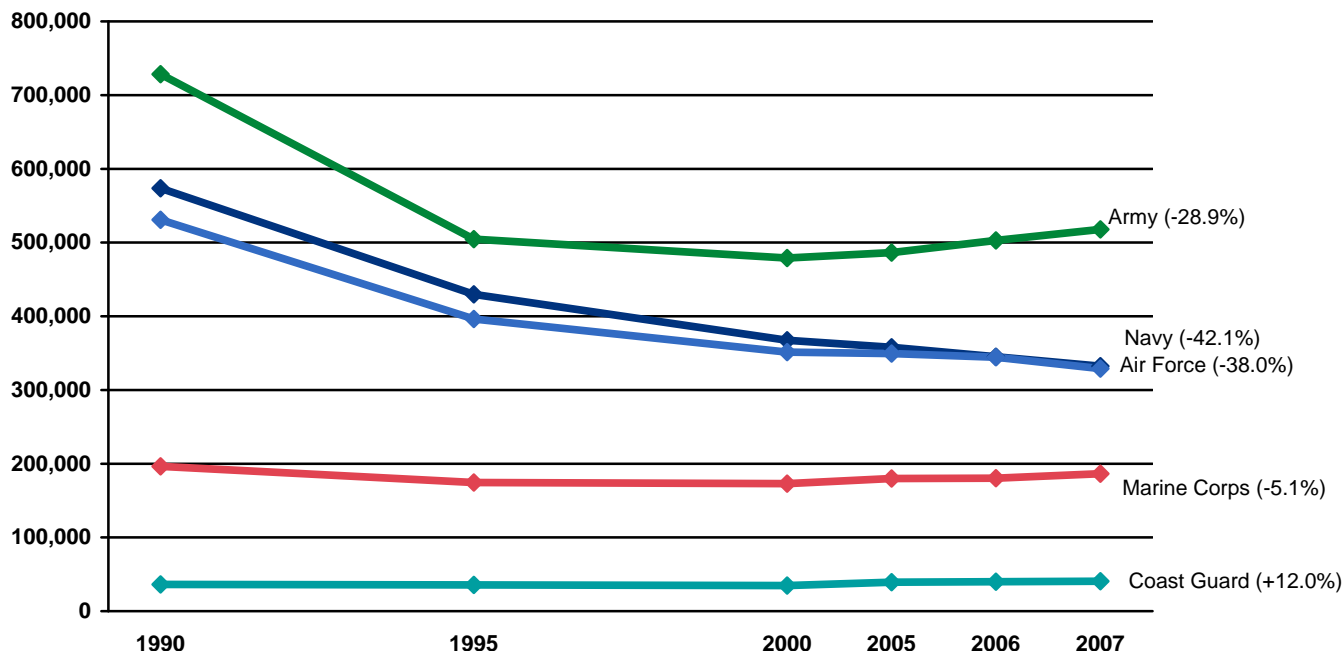


DMDC Reserve Component Common Personnel Data System (September 2007)

ACTIVE DUTY

1.05. DoD Active Duty and DHS Coast Guard Active Duty Trends: 1990-2007

Today's DoD Active Duty force is 31.9 percent smaller than it was in 1990. The percent reported at the end of each line represents the relative difference in the size of the force in 2007 compared to the size of the force in 1990. The Navy has had the largest percent decrease across all of the Service branches, while the DHS Coast Guard has had an increase in the number of members compared to 1990.



Note: Data are represented ONLY for the years indicated. Data for the years in between are NOT represented in this graph.

DMDC Active Duty Master File (September 1990, 1995, 2000, 2005, 2006, 2007)

1.06. DoD Active Duty and DHS Coast Guard Active Duty Trend Numbers: 1990-2007

The number of Active Duty personnel serving in the Army, Navy, Marine Corps, and Air Force has declined, causing the total DoD Active Duty force to decrease from 2,029,300 in 1990 to 1,365,571 in 2007. Conversely, the Coast Guard has increased in size from 36,297 to 40,650 during this time period.

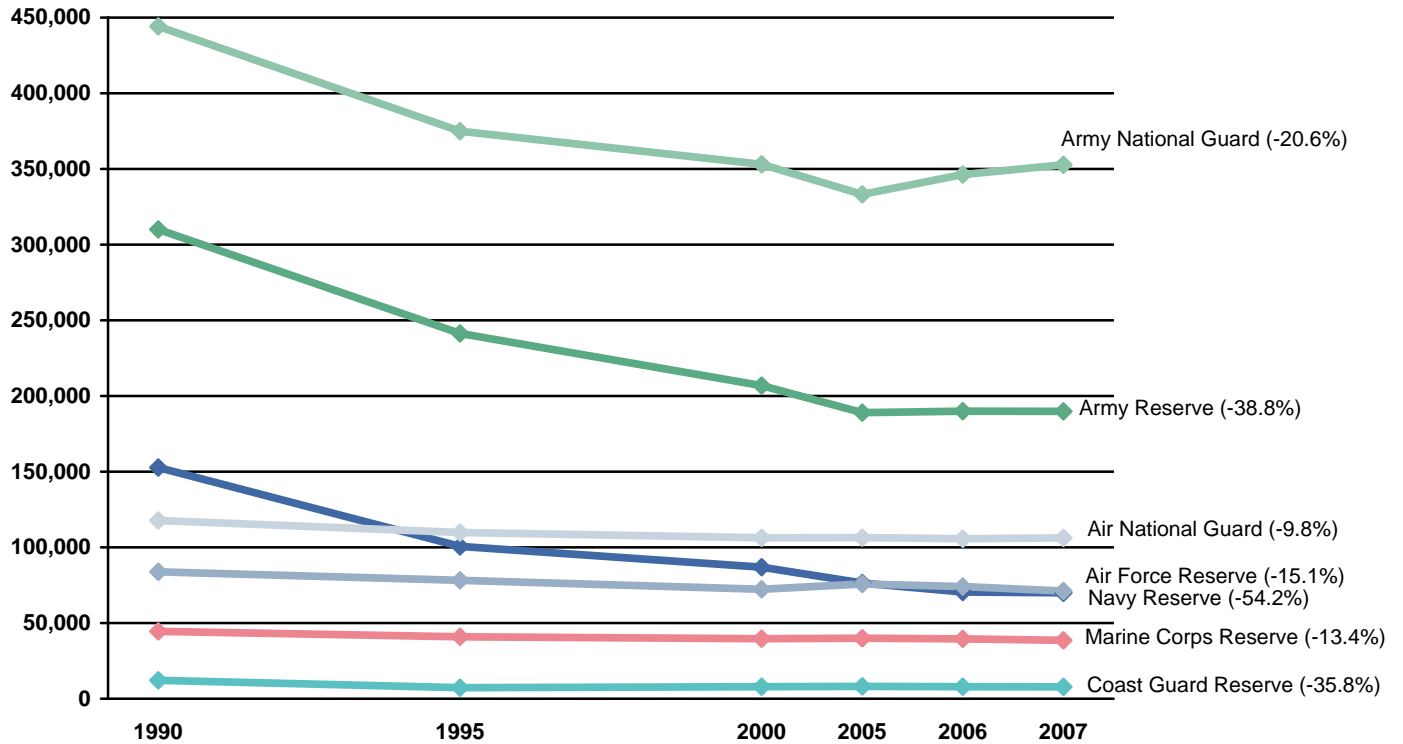
Year	Army	Navy	Marine Corps	Air Force	Total DoD	Coast Guard	Total
1990	728,345	573,737	196,353	530,865	2,029,300	36,297	2,065,597
1995	504,710	429,630	174,561	396,382	1,505,283	35,582	1,540,865
2000	479,026	367,371	172,955	351,326	1,370,678	34,804	1,405,482
2005	486,483	357,853	179,836	349,362	1,373,534	39,361	1,412,895
2006	502,790	345,098	180,252	344,529	1,372,669	39,980	1,412,649
2007	517,783	332,269	186,425	329,094	1,365,571	40,650	1,406,221

DMDC Active Duty Master File (September 1990, 1995, 2000, 2005, 2006, 2007)

SELECTED RESERVE

1.07. Selected Reserve Component Trends: 1990-2007

On the whole, the Selected Reserve force is 28.2 percent smaller today than it was in 1990. The percent reported at the end of each line represents the relative difference in the size of the force in 2007 compared to the size of the force in 1990.



Note: Data are represented ONLY for the years indicated. Data for the years in between are NOT represented in this graph.

DMDC Reserve Component Common Personnel Data System (September 1990, 1995, 2000, 2005, 2006, 2007)

1.08. Selected Reserve Component Trend Numbers: 1990-2007

The total number of Selected Reserve members has decreased from 1,165,336 in 1990 to 836,256 in 2007. Every Reserve component experienced a decline in personnel over this period.

Year	Army National Guard	Army Reserve	Navy Reserve	Marine Corps Reserve	Air National Guard	Air Force Reserve	Total DoD	Coast Guard Reserve	Total Sel Res
1990	444,224	310,071	152,789	44,530	117,786	83,813	1,153,213	12,123	1,165,336
1995	374,930	241,300	100,597	40,933	109,825	78,267	945,852	7,340	953,192
2000	353,045	206,892	86,933	39,667	106,365	72,340	865,242	7,965	873,207
2005	333,177	189,005	76,466	39,938	106,430	75,802	820,818	8,187	829,005
2006	346,288	189,975	70,500	39,489	105,658	74,075	825,985	7,945	833,930
2007	352,707	189,882	69,933	38,557	106,254	71,146	828,479	7,777	836,256

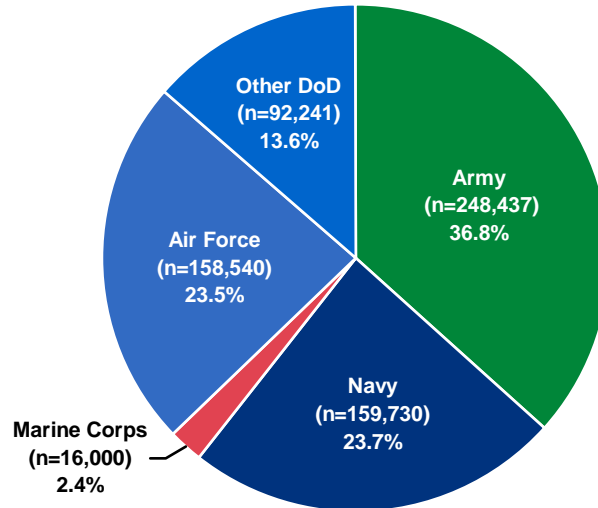
DMDC Reserve Component Common Personnel Data System (September 1990, 1995, 2000, 2005, 2006, 2007)

DoD CIVILIAN PERSONNEL

DoD civilians are divided into two primary categories. Appropriated Funds (AF) civilian employees are funded by congressional appropriations, while Non-Appropriated Funds (NAF) civilian employees are not funded by congressional appropriations. Rather, NAF positions are funded by revenue generating activities.

1.09. DoD Civilians (AF) by Service Branch (N=674,948)

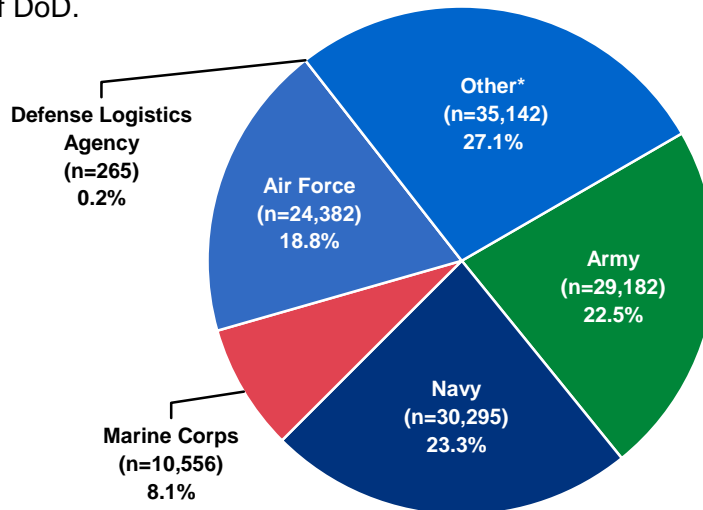
There are 674,948 AF civilian personnel who constitute 19.2 percent of the total DoD workforce.



DMDC Civilian Personnel File (September 2007)

1.10. DoD Civilians (NAF) by Service Branch (N=129,822)

There are 129,822 NAF civilians who constitute 3.7% of the total DoD workforce. The largest percentage are working for the Navy (23.3%), followed by the Army (22.5%), Air Force (18.8%), Marine Corps (8.1%), and Defense Logistics Agency (0.2%). The remainder (27.1%) work within other areas of DoD.



* Includes AAFES.

DMDC Civilian Personnel File (September 2007)